

SURVEY OF INLOTS 124 & 141

PERRYSBURG, OHIO

CORP.

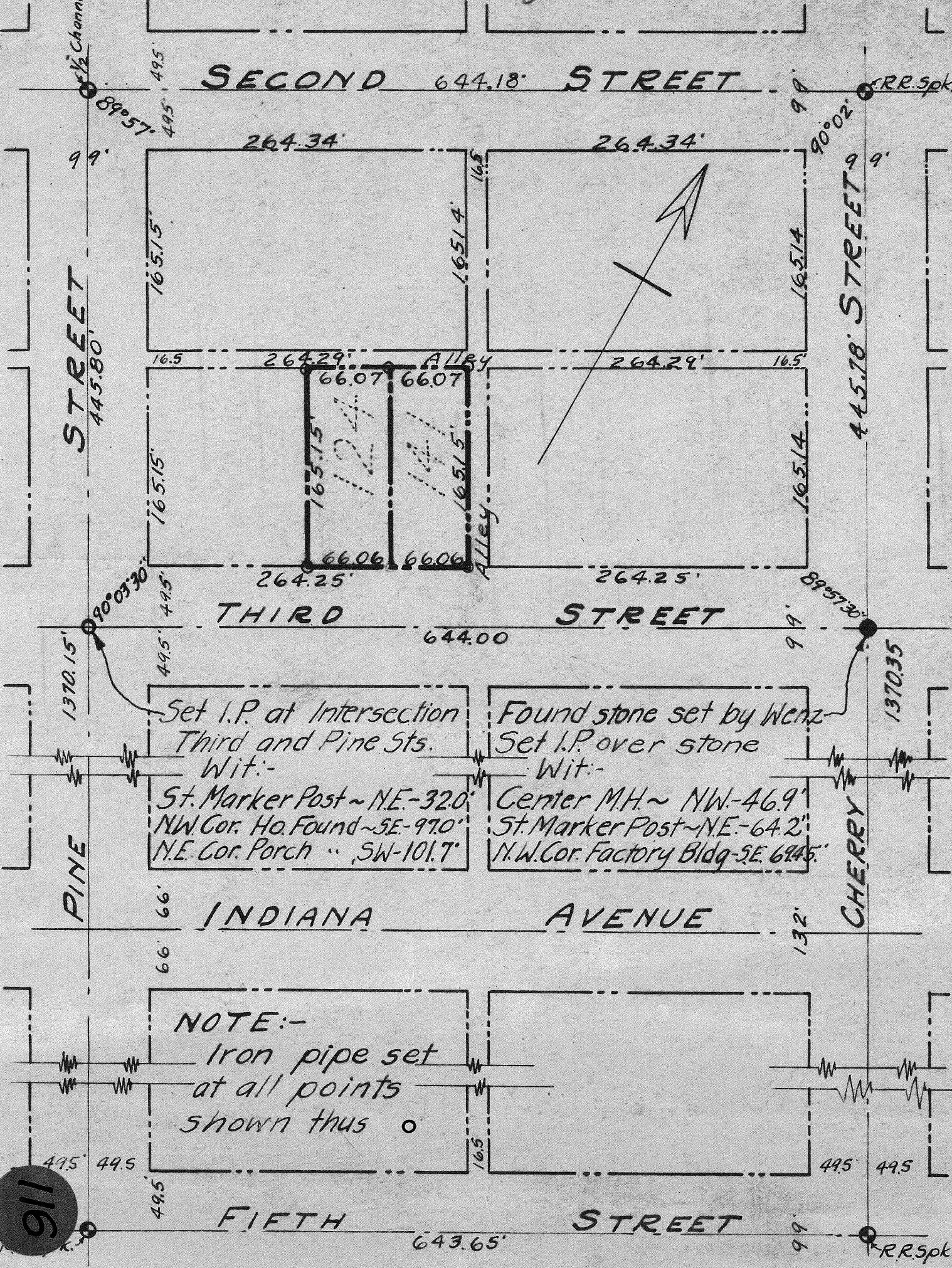
Scale:- 1" = 100'

Jan. 5 & 6, 1938

Surveyed by Edward Meyer, Surv. Lic. #2806

#116

#116



Set I.P. at Intersection
Third and Pine Sts.
Wit:-
St. Marker Post ~ NE-32.0'
NW Cor. Ho. Found ~ SE-97.0'
N.E. Cor. Porch .. SW-101.7'

Found stone set by Wenz
Set I.P. over stone
Wit:-
Center M.H. ~ NW-46.9'
St. Marker Post ~ NE-64.2'
N.W. Cor. Factory Bldg-SE. 64.5'

NOTE:-
Iron pipe set
at all points
shown thus ○

911

Full