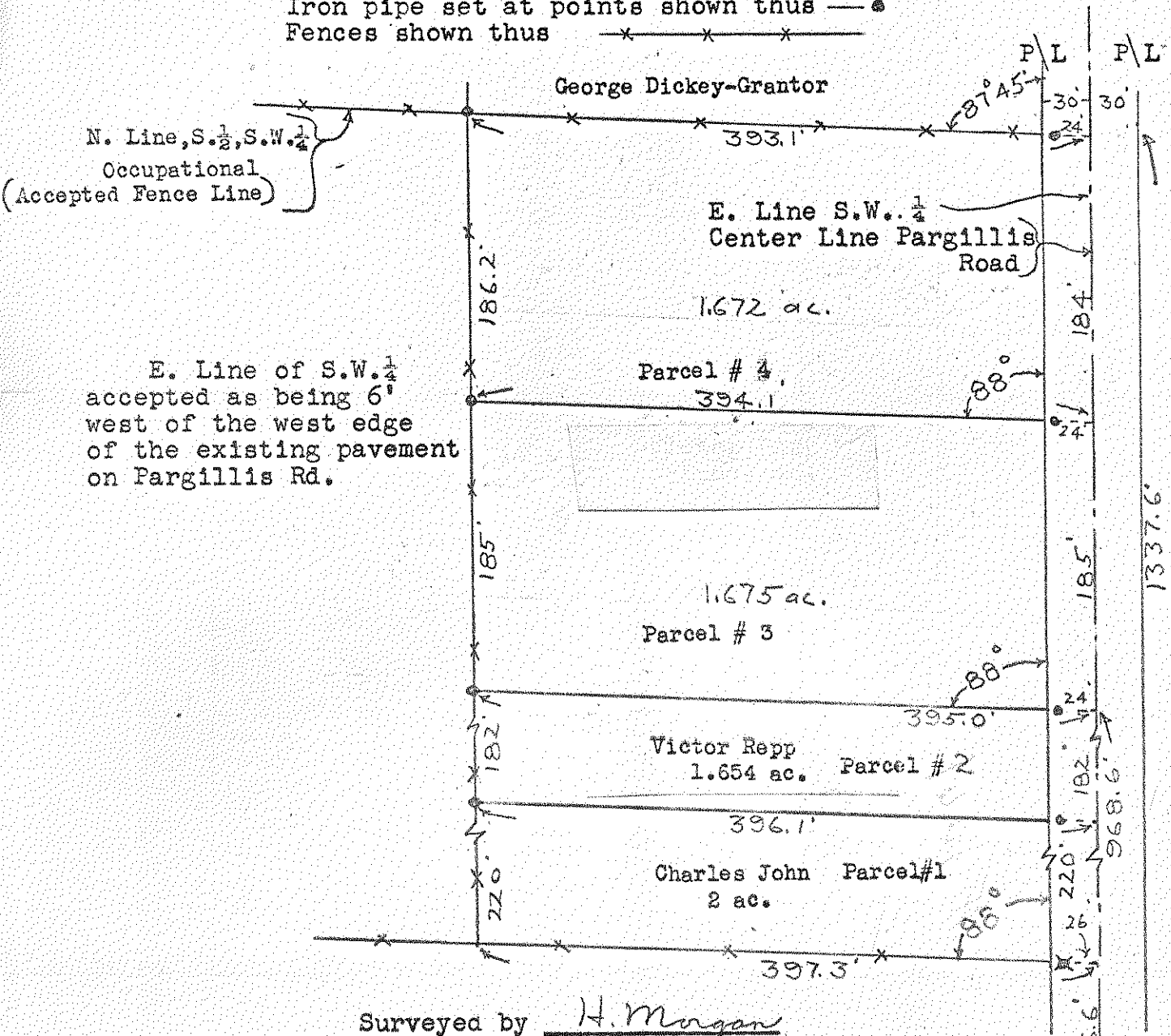


583
MIDDLETON

SURVEY
in
S.W. 1/4, Sec. 24, Middleton
Twp., Wood Co. O.

Control points shown thus ————
Wooden corner post shown thus ————
Iron pipe set at points shown thus —●—
Fences shown thus —x—x—x—



E. Line of S.W. 1/4 accepted as being 6" west of the west edge of the existing pavement on Pargillis Rd.

Surveyed by H. Morgan

Sept. 1964 Reg. Sur. 890
June 1965

S. Line Sec. 24
Center Line s.R. 582 } SE Cor.

583
MIDDLETON