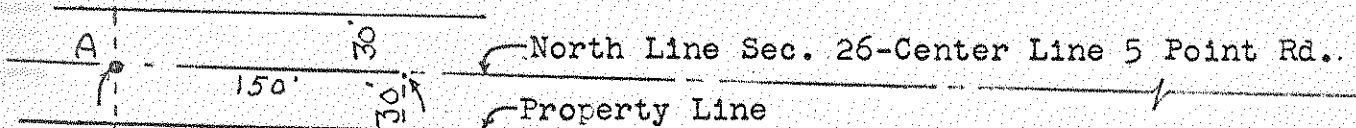


577  
MIDDLETON

SURVEY

in  
N.W.  $\frac{1}{4}$  of Sec. 26, U.S.R. Town 1  
Middleton Twp. Wood Co. O.

Charlie J. Winters Farm



West Line  
Sec. 26

Point A- N.W. Cor. Sec. 26. Found R.R. Spike from references on file in the Wood County Engineers Office.

Ref. { Conc. Marker N.E. 16.55'  
" " S.E. 34.40'

{ N.E. Cor. Barn Found. S.S.W. 86.75'

Point B- Set Iron Pipe

Ref. { 17.95' N.N.W. to Shiner in 15" Oak  
11.90' W.N.W. " " " 18" "

Point C- Found Stone laying on the surface of the ground. Reset Stone at the intersection of the fence lines.

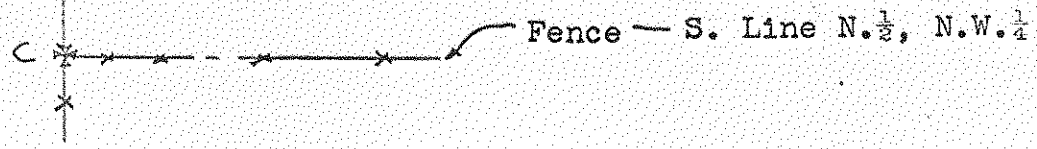
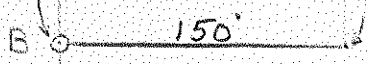
2.245 ac.

652'

652'

Surveyed by H. Morgan

Sept. 1963 Reg. Sur. 890



577  
MIDDLETON