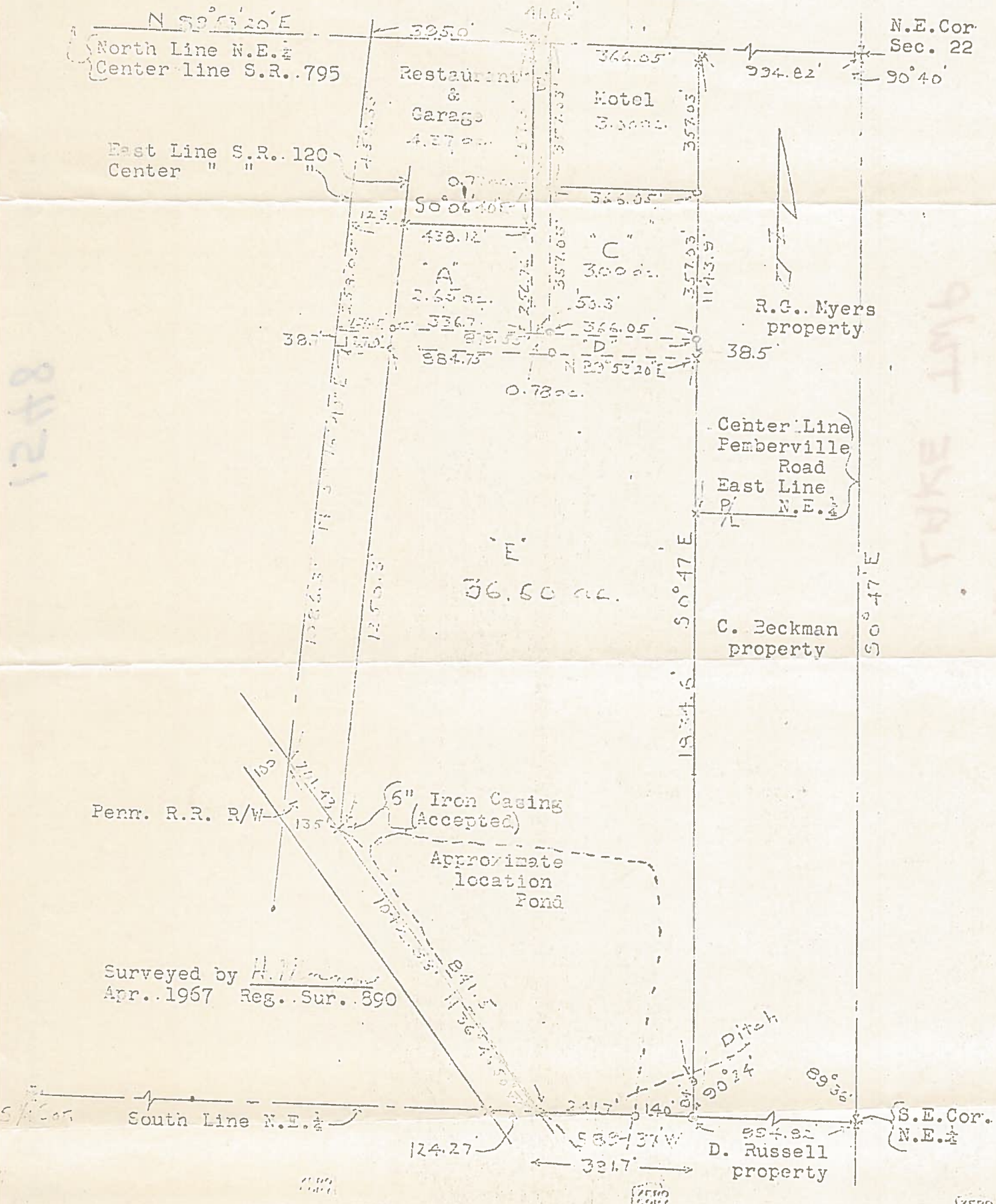


LAKE
794

in
N.E. 1/4, Sec. 22, T7N-R12E, Lake Twp.
Wood Co. O.
Goodman Est.

Control points shown thus \ast
Iron markers found at points shown thus \times
Iron pipe set at points shown thus \circ



1248

LAKE TWP
ME 14 20 33

LAKE
794