



Evans, Mechwart, Hambleton & Tilton, Inc.
 Engineers • Surveyors • Planners • Scientists
 5500 New Albany Road, Columbus, OH 43054
 Phone: 614.775.4500 Toll Free: 888.775.3648
 emht.com

SURVEY OF ACREAGE PARCEL

SOUTHWEST QUARTER SECTION 27, TOWNSHIP 3, RANGE 10

NORTH AND EAST OF THE FIRST PRINCIPLE MERIDIAN

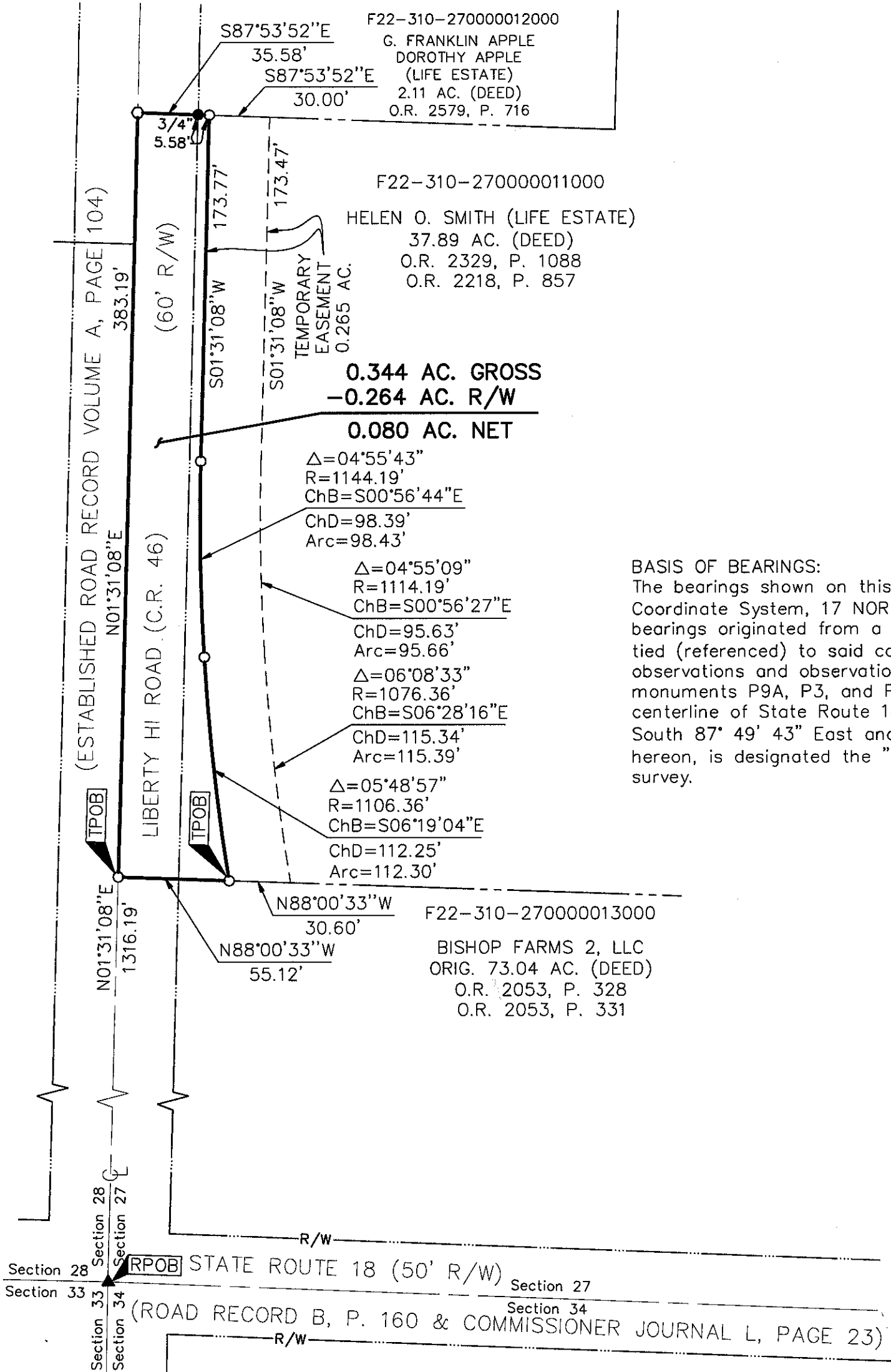
TOWNSHIP OF HENRY, COUNTY OF WOOD, STATE OF OHIO

Henry A 527

Date: January 27, 2009

Job No. 2009-1333

Scale: 1" = 60'




BASIS OF BEARINGS:
 The bearings shown on this plat are based on UTM Coordinate System, 17 NORTH, NAD83(2007). Said bearings originated from a field traverse which was tied (referenced) to said coordinate system by GPS observations and observations of selected NGS monuments P9A, P3, and P3A. The portion of the centerline of State Route 18, having a bearing of South 87° 49' 43" East and monumented as shown hereon, is designated the "basis of bearing" for this survey.

20091333\20091333SV_GROUND\DWG\91333BV8.DWG plotted by MEYER, JOSH on 2/3/2010 7:23:14 AM last saved by JMEYER on 1/27/2010 10:01:21 AM

Henry A 527



By 
 Professional Surveyor No. 8250
 Edward J. Miller, P.S.

2/3/10
 Date

