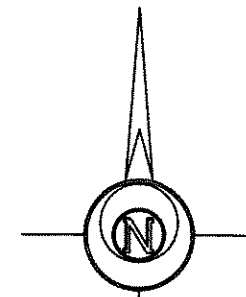


101 R

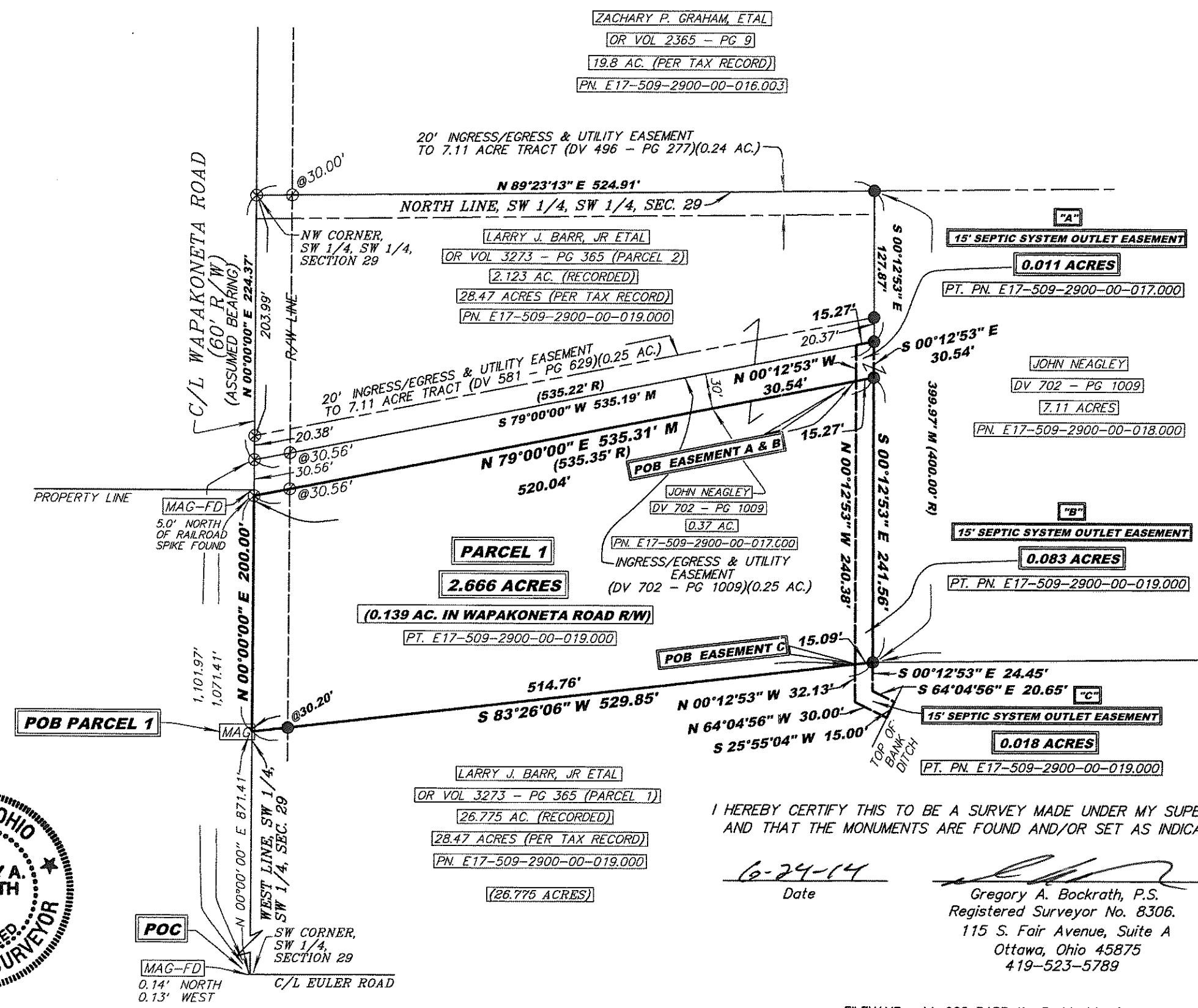


GRAPHIC SCALE 1" = 100'

LEGEND

- 5/8" REBAR WITH ID CAP SET
- 5/8 INCH REBAR W/ID CAP FOUND
- ⊗ RAILROAD SPIKE FOUND
- [MAG] MAG NAIL SET
- [MAG-FD] MAG NAIL FOUND
- POB POINT OF BEGINNING
- POC POINT OF COMMENCEMENT

THIS SURVEY WAS PERFORMED WITHOUT THE BENEFIT OF A TITLE EXAMINATION. BEYOND THE DEED DOCUMENTS CITED ON THE SURVEY DRAWING THERE MAY BE RECORDED OR UNRECORDED EASEMENTS AND/OR ENCUMBRANCES BENEFITING OR ENCUMBERING THE SURVEYED PROPERTY WHICH ARE NOT SHOWN ON THIS DRAWING.



ZACHARY P. GRAHAM, ETAL
 OR VOL 2365 - PG 9
 19.8 AC. (PER TAX RECORD)
 PN. E17-509-2900-00-016.003

20' INGRESS/EGRESS & UTILITY EASEMENT TO 7.11 ACRE TRACT (DV 496 - PG 277)(0.24 AC.)

N 89°23'13" E 524.91'
 NORTH LINE, SW 1/4, SW 1/4, SEC. 29

LARRY J. BARR, JR ETAL
 OR VOL 3273 - PG 365 (PARCEL 2)
 2.123 AC. (RECORDED)
 28.47 ACRES (PER TAX RECORD)
 PN. E17-509-2900-00-019.000

20' INGRESS/EGRESS & UTILITY EASEMENT TO 7.11 ACRE TRACT (DV 581 - PG 629)(0.25 AC.)
 (535.22' R)
 S 79°00'00" W 535.19' M

N 79°00'00" E 535.31' M
 (535.35' R)
 520.04'

JOHN NEAGLEY
 DV 702 - PG 1009
 0.37 AC.
 PN. E17-509-2900-00-017.000

PARCEL 1
 2.666 ACRES

(0.139 AC. IN WAPAKONETA ROAD R/W)
 PT. PN. E17-509-2900-00-019.000

INGRESS/EGRESS & UTILITY EASEMENT (DV 702 - PG 1009)(0.25 AC.)

POB EASEMENT C
 15.09'
 N 00°12'53" W 32.13'
 N 64°04'56" W 30.00'
 S 25°55'04" W 15.00'

LARRY J. BARR, JR ETAL
 OR VOL 3273 - PG 365 (PARCEL 1)
 26.775 AC. (RECORDED)
 28.47 ACRES (PER TAX RECORD)
 PN. E17-509-2900-00-019.000
 (26.775 ACRES)

I HEREBY CERTIFY THIS TO BE A SURVEY MADE UNDER MY SUPERVISION AND THAT THE MONUMENTS ARE FOUND AND/OR SET AS INDICATED.

6-24-14
 Date

Gregory A. Bockrath, P.S.
 Registered Surveyor No. 8306.
 115 S. Fair Avenue, Suite A
 Ottawa, Ohio 45875
 419-523-5789

N 89°23' 13" E 667.59'
 NORTH LINE 26.775 AC.

POB EASEMENT B
 15 SEPTIC SYSTEM OUTLET EASEMENT
 0.083 ACRES
 PT. PN. E17-509-2900-00-019.000

POB EASEMENT A
 15 SEPTIC SYSTEM OUTLET EASEMENT
 0.011 ACRES
 PT. PN. E17-509-2900-00-017.000

POB PARCEL 1



POC
 MAG-FD
 0.14' NORTH
 0.13' WEST
 SW CORNER, SW 1/4, SECTION 29
 C/L EULER ROAD

SURVEY FOR: LARRY BARR

PT. OF THE SW 1/4 OF THE SW 1/4 OF SECTION 29, T5N - R9E GRAND RAPIDS TOWNSHIP, WOOD COUNTY, OHIO

BOCKRATH & ASSOCIATES
 ENGINEERING and SURVEYING, LLC
 115 S. FAIR AVENUE, SUITE A - OTTAWA, OH 45875
 PHONE: 419-523-5789 - FAX: 419-523-5799

1
 Grand Rapids
 A 301