

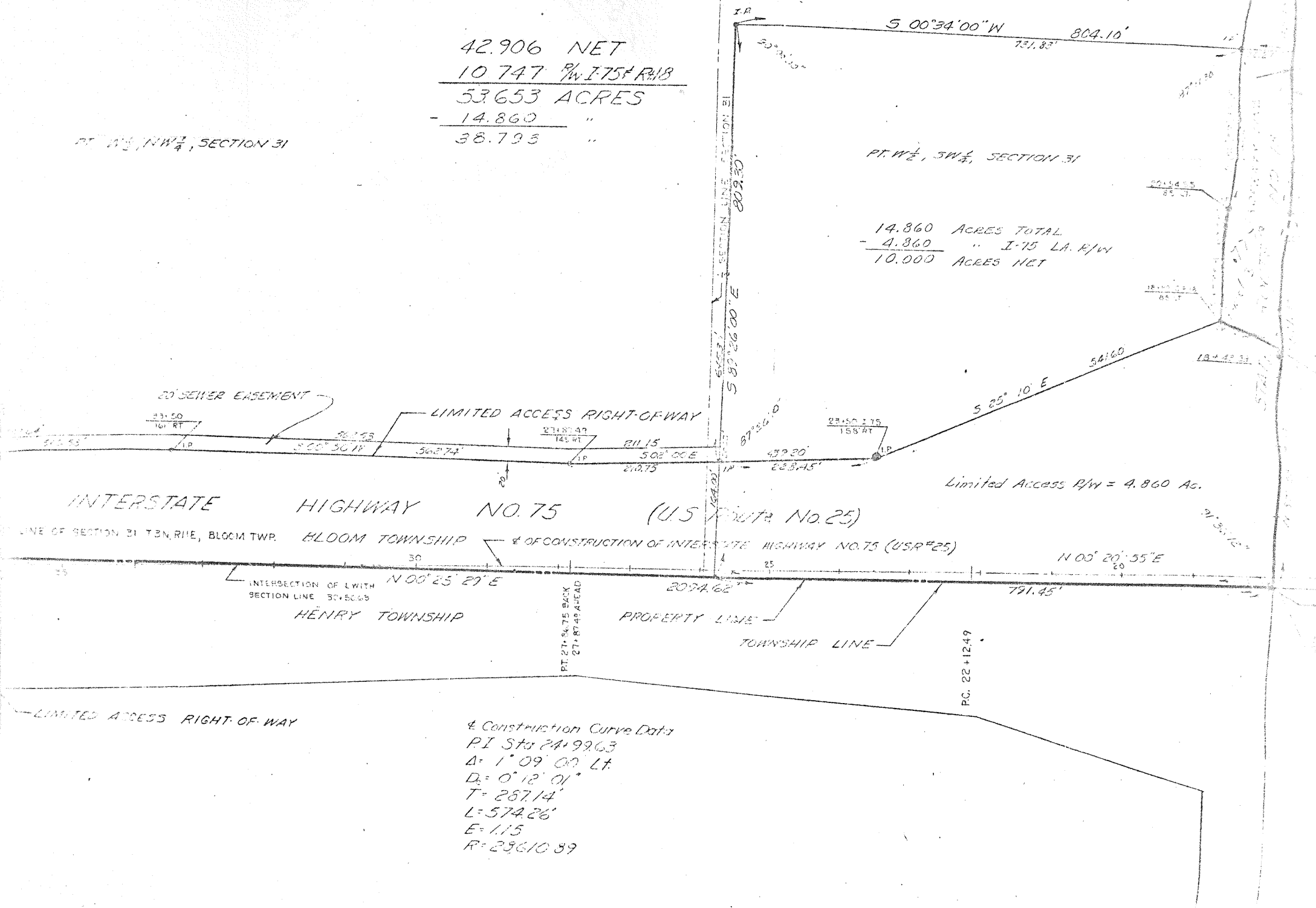
432
Bloom

42.906	NET
10.747	P/W I-75 R/W
<hr/>	
53.653	ACRES
- 14.860	"
<hr/>	
38.793	"

PT. W 1/2, NW 1/4, SECTION 31

PT. W 1/2, SW 1/4, SECTION 31

14.860	ACRES TOTAL
- 4.860	" I-75 LA. R/W
<hr/>	
10.000	ACRES NET



432
Bloom
B