

B.G. Corp 986

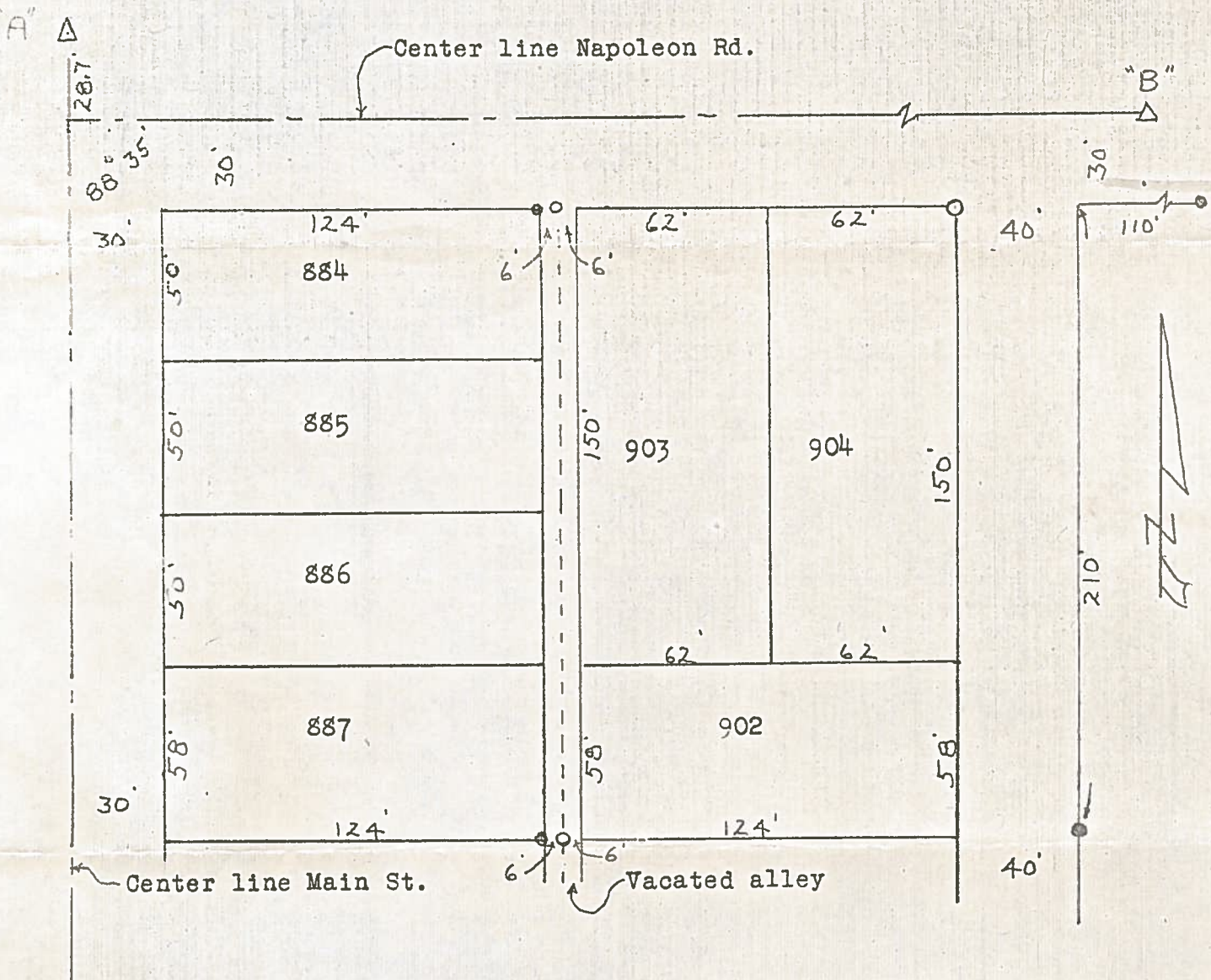
KERO

KERO

KERO

SURVEY  
of  
Lots 902, 903 and 904  
Bowling Green, Ohio

Control points shown thus  $\Delta$  "A" E $\frac{1}{4}$  Cor. Sec. 25, Plain Twp.  
"B" Center line int. Summit & Napoleon Rds.  
Iron pipe found at points shown thus  $\odot$   
" " set " " " "  $\circ$



Surveyed by H. Morgan  
Aug. 1968 Reg. Sur. 890

B.G. Corp 986