

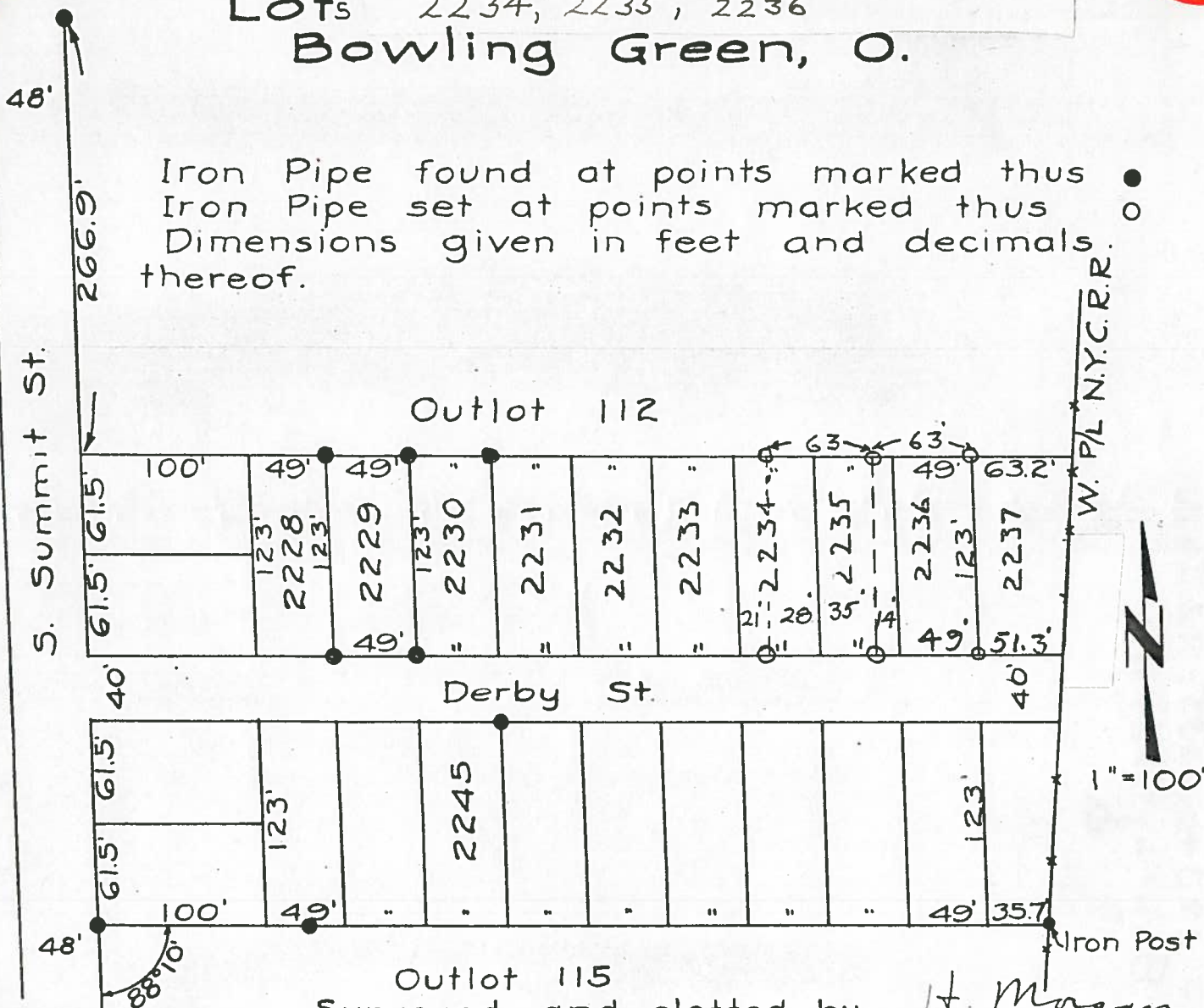
B.G.
CORP
1113

B.G.
CORP
1113

Survey

Lots 2234, 2235, 2236
Bowling Green, O.

Iron Pipe found at points marked thus ●
Iron Pipe set at points marked thus ○
Dimensions given in feet and decimals thereof.



Outlot 115
Surveyed and platted by H. Morgan
July 1973 Reg. Sur. 890