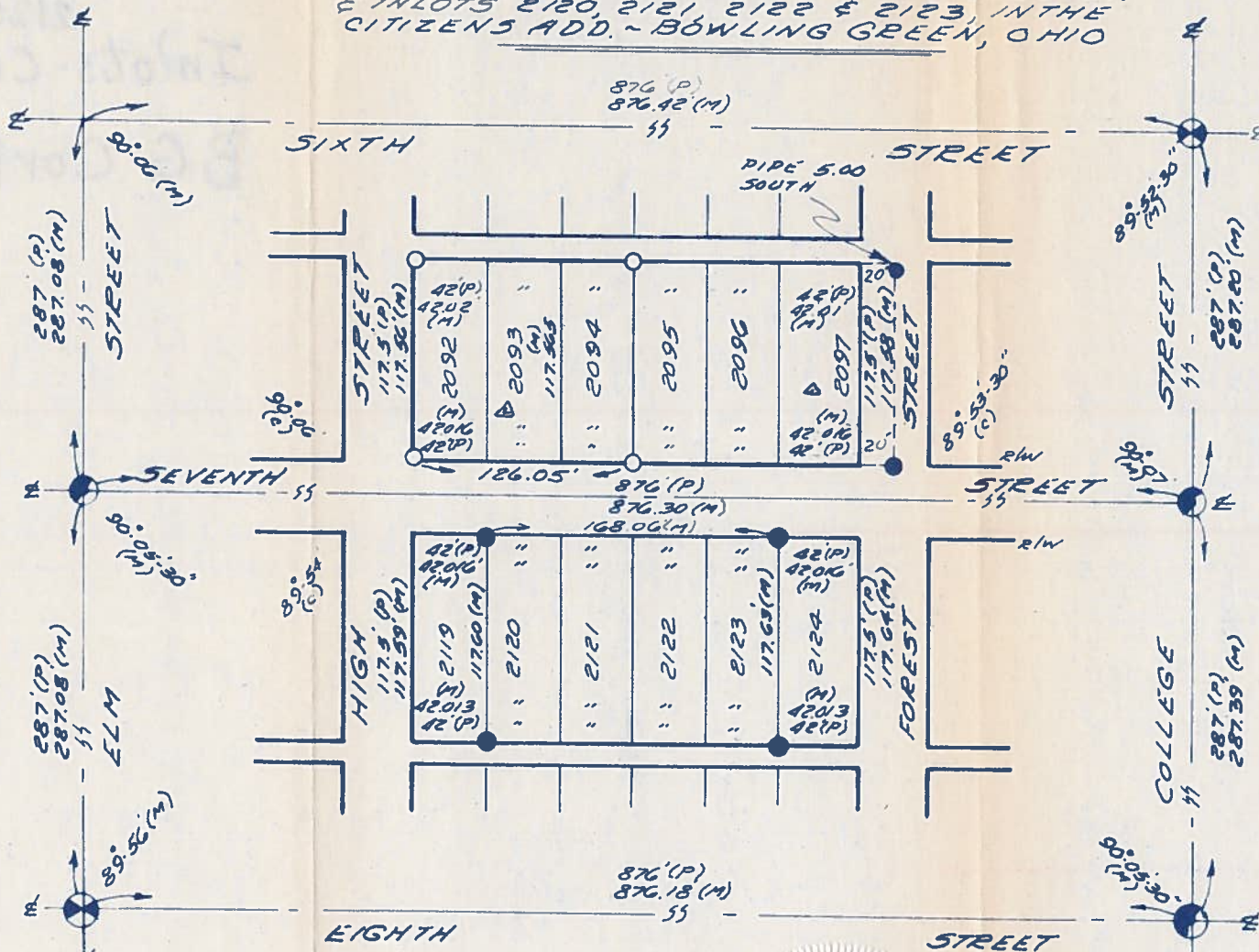


B.G.
CORP
1039

B.G.
CORP
1039

SURVEY FOR DOUG VALENTINE

BEING IN LOTS 2092 — 2096 & W 1/2 2097,
& IN LOTS 2120, 2121, 2122 & 2123, IN THE
CITIZENS ADD. - BOWLING GREEN, OHIO



- = IRON PIPE FOUND
- ⊙ = SPIKE & SHINER FOUND
- ⊗ = R.R. SPIKE FOUND
- = IRON PIPE SET
- (P) = PLAT DISTANCE
- (M) = MEASURED
- (C) = CALCULATED

WE HEREBY CERTIFY THE ABOVE DESCRIBED
PARCELS WERE SURVEYED DURING APRIL,
1970. ALL DISTANCES ARE IN FEET AND
DECIMALS THEREOF.

LESTER H. FOGG MEYER - CONSULTING ENGINEER
& SURVEYOR - BOWLING GREEN, OHIO.

BY: Arthur O. Lybarger
ARTHUR O. LYBARGER, REG. SURVEYOR # 4418

7023 5 - 4L
Δ REVISED 6-5-70 P.E.C.