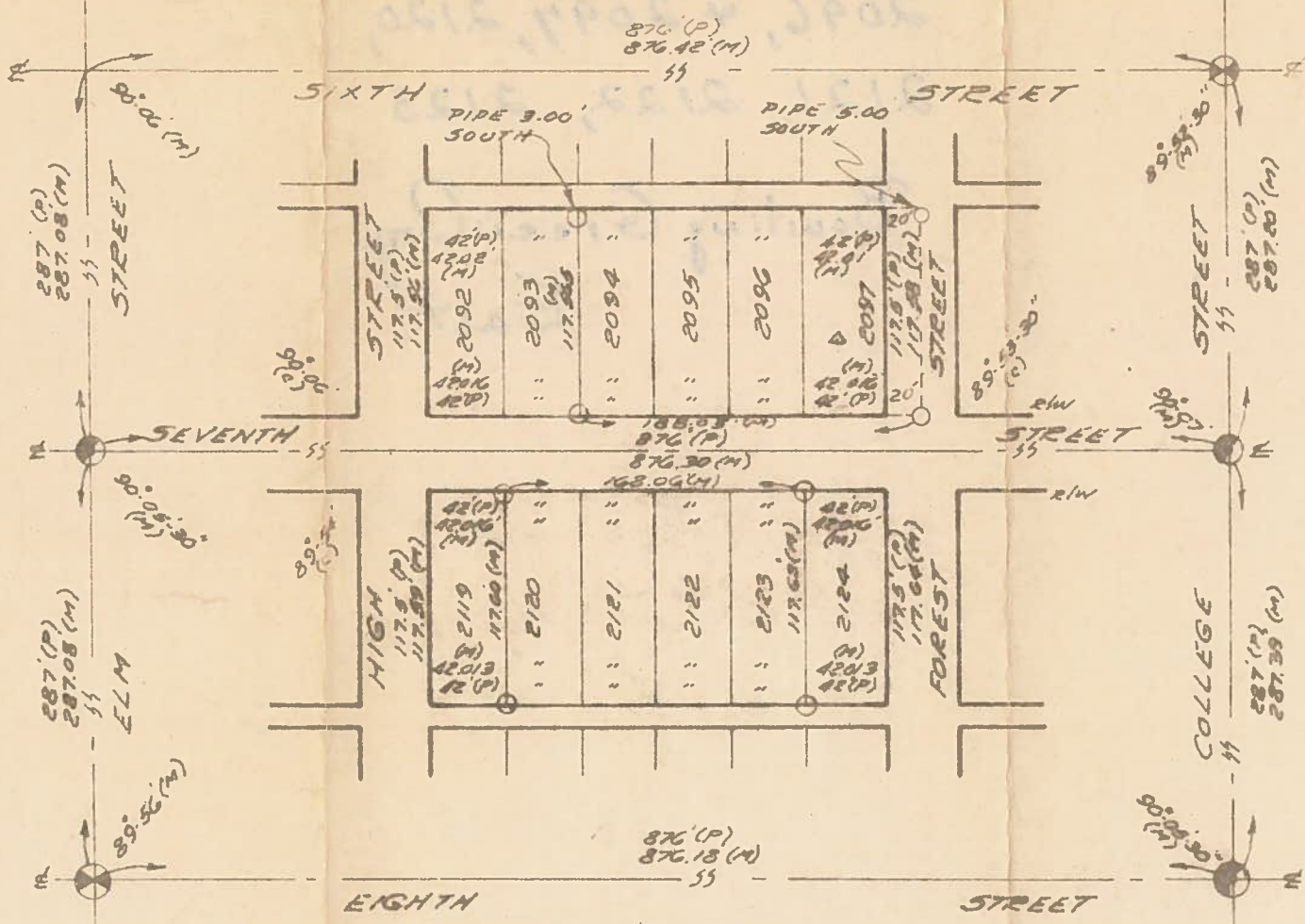


B.G.  
CORP  
1017

B.G.  
CORP  
1017

# SURVEY FOR DOUG VALENTINE

BEING IN LOTS 2094, 2095, 2096 & W/2 2097,  
& IN LOTS 2120, 2121, 2122 & 2123, IN THE  
CITIZENS ADD. - BOWLING GREEN, OHIO



- = SPIKE & SHINER FOUND
- ⊗ = R.R. SPIKE FOUND
- = IRON PIPE SET
- (P) = PLAT DISTANCE
- (M) = MEASURED
- (C) = CALCULATED

WE HEREBY CERTIFY THE ABOVE DESCRIBED  
PARCELS WERE SURVEYED DURING APRIL,  
1970. ALL DISTANCES ARE IN FEET AND  
DECIMALS THEREOF.

LESTER H. FOGGEMEYER - CONSULTING ENGINEER  
& SURVEYOR - BOWLING GREEN, OHIO.

BY: Arthur O. Lybarger  
ARTHUR O. LYBARGER, REG. SURVEYOR # 4418



REVISED 6-5-70 P.E.C.