

B.G.
CORP
987

ONLINE

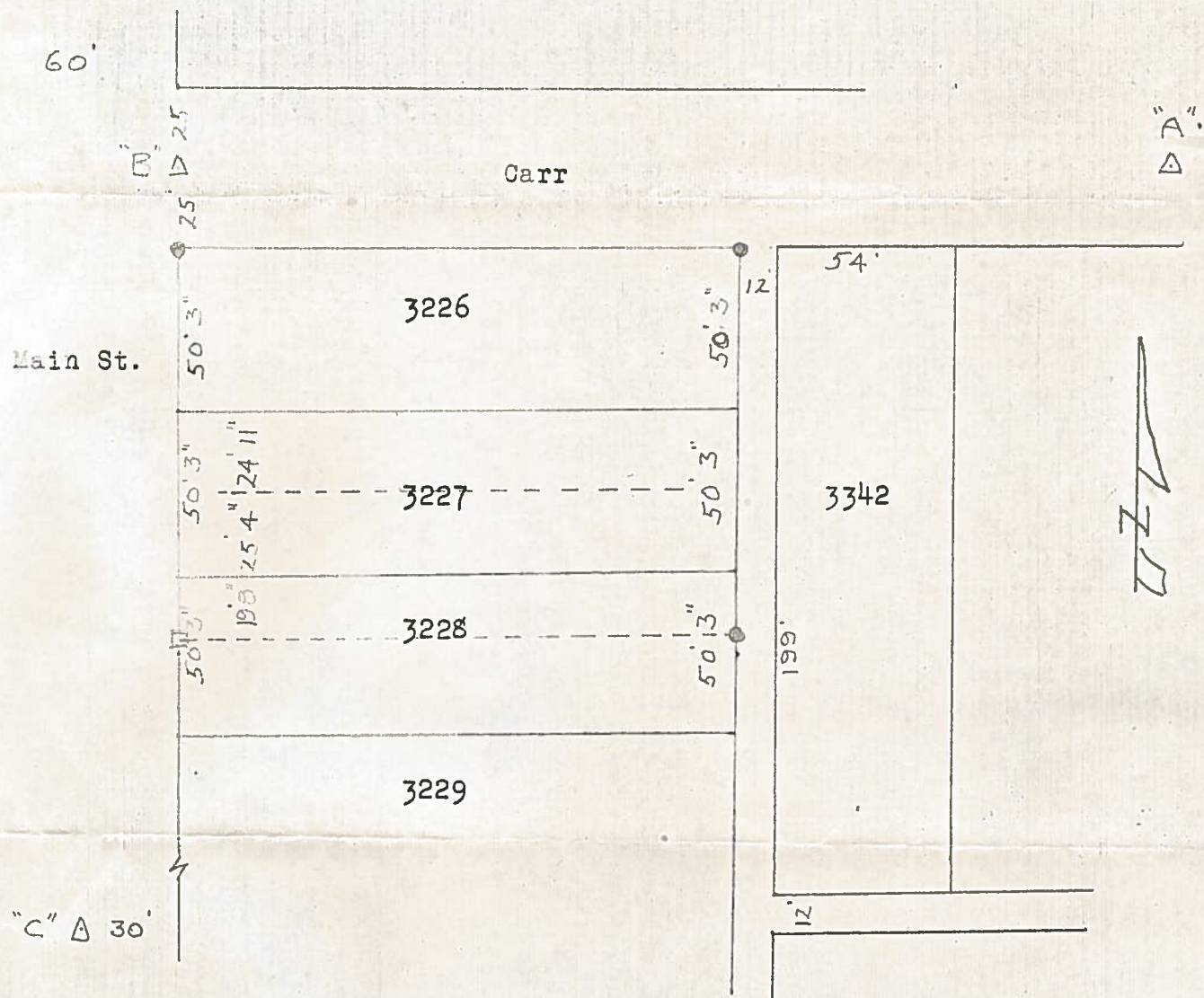
SURVEY

ONLINE

ONLINE

of
Lots 3226, 3227 & N. 19' 8" Lot 3228
Bowling Green, O.
for
Kirks Coin-O-Mat

Control points shown thus Δ "A" Int. Center line Prospect & Carr
"B" " " " Carr & E. 7th L Main
"C" E. 1st Cor. Sec. 25, Plain Twp.
Iron markers set at points shown thus \bullet
Cross cut in top of Stone Pillar shown thus \square



Surveyed by H. Morgan
Aug. 1968 Reg. Sur. 890

B.G.
CORP
987