

B.G. CORP 963

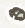
Lot Survey in Bowling Green, O.

Dimensions shown are both Record and measured unless noted.

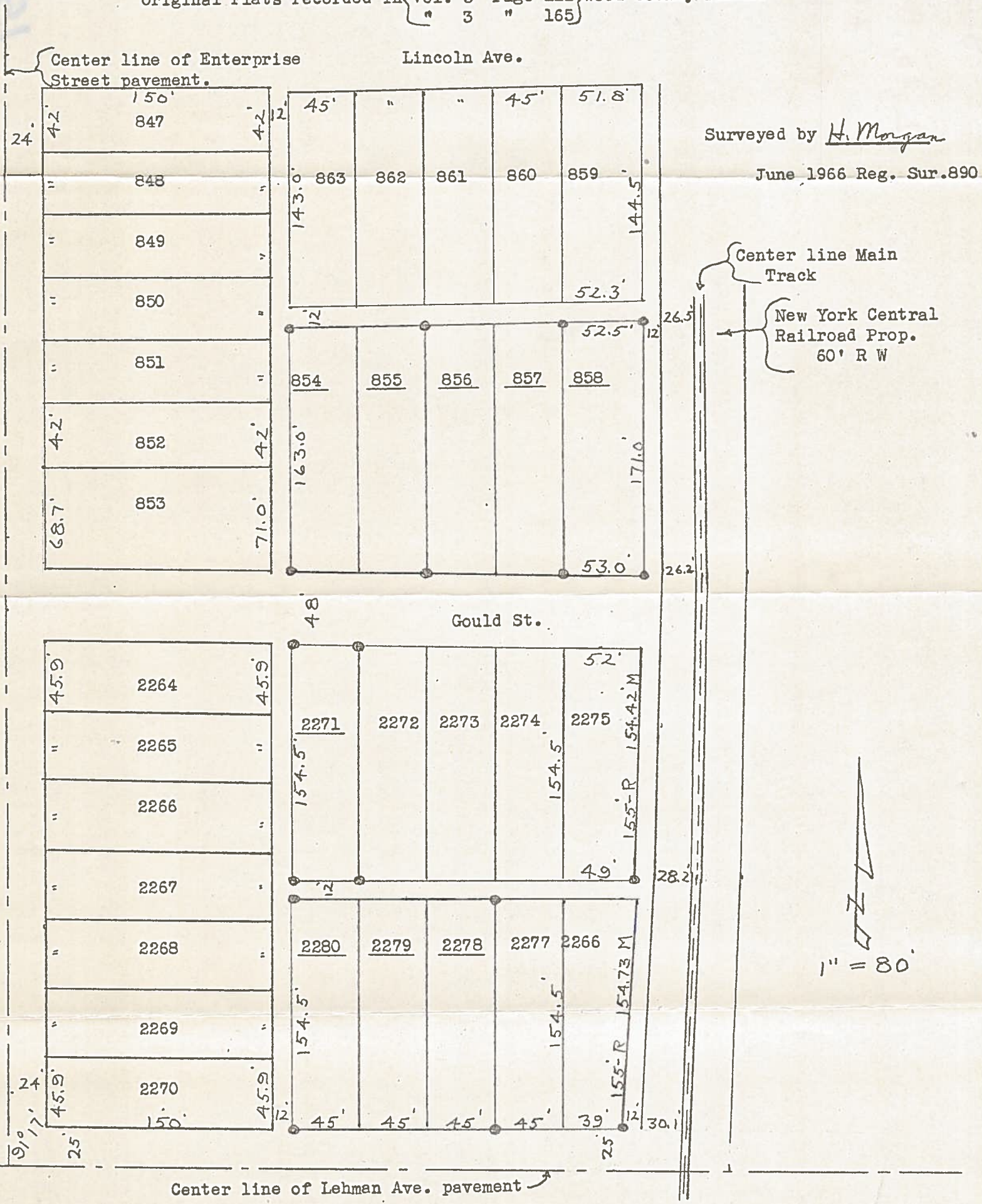
R-Record M-measured.

Survey based on the center line of Enterprise St. and Lehman Ave. pavements.

Lot number of Lots surveyed are underlined.

Iron pipe set at points shown thus 

Original Plats recorded in { Vol. 3 Page 111 } Wood County Plats.
 { " 3 " 165 }



Surveyed by H. Morgan

June 1966 Reg. Sur. 890

Center line Main Track

New York Central
Railroad Prop.
60' R W


1" = 80'

B.G. CORP 963