

B.G. CORP 963

Lot Survey  
in  
Bowling Green, O.

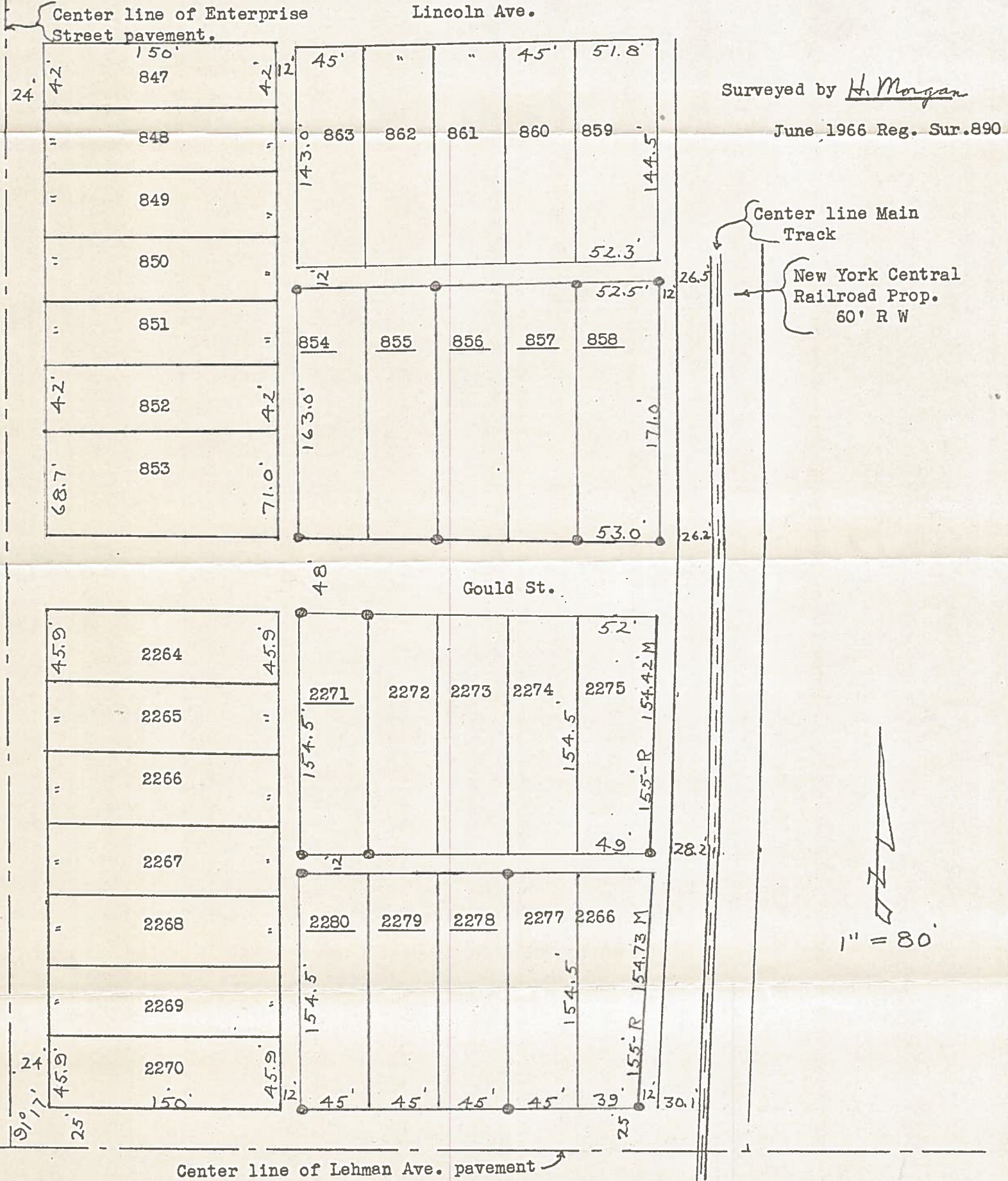
Dimensions shown are both Record and measured unless noted.

R-Record M-measured.

Survey based on the center line of Enterprise St. and Lehman Ave. pavements.  
Lot number of Lots surveyed are underlined.

Iron pipe set at points shown thus ●

Original Plats recorded in { Vol. 3 Page 111 } Wood County Plats.  
  { " 3 " 165 }



Surveyed by H. Morgan

June 1966 Reg. Sur. 890

1" = 80'

B.G. CORP 963