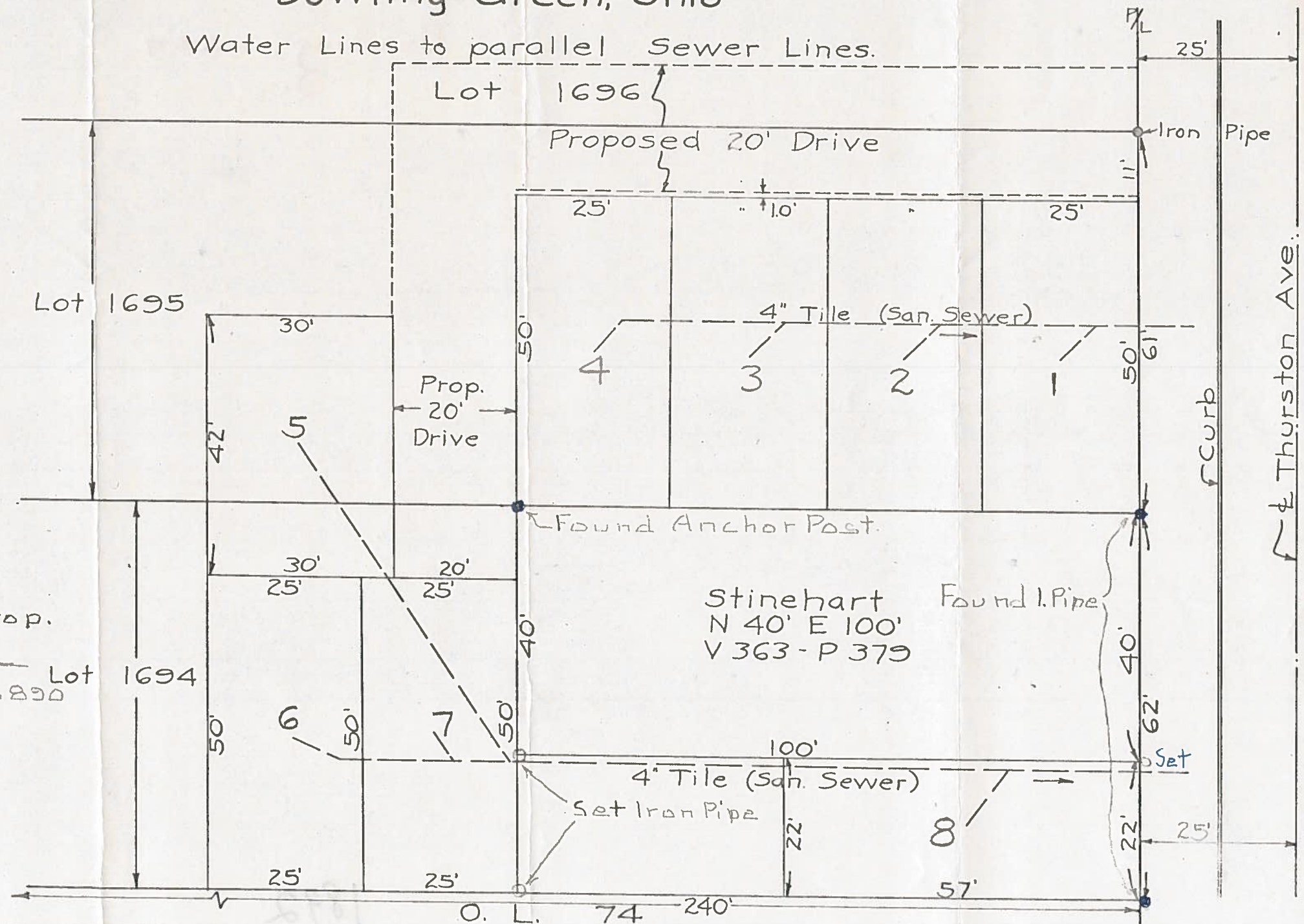
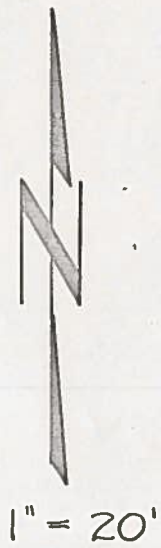


B.G. Corp. 1003

B.G. Corp. 1003

Proposed Howard Trailer Court - Extension No. 1 (8 Units - 1250 Sq. Ft. per Unit) Bowling Green, Ohio

Water Lines to parallel Sewer Lines.



Surveyed
Stinehart prop.

H Morgan Lot 1694
7-25-1969 R.S. 890

Stinehart Found I. Pipe
N 40° E 100'
V 363 - P 379

O. L. 74 240'