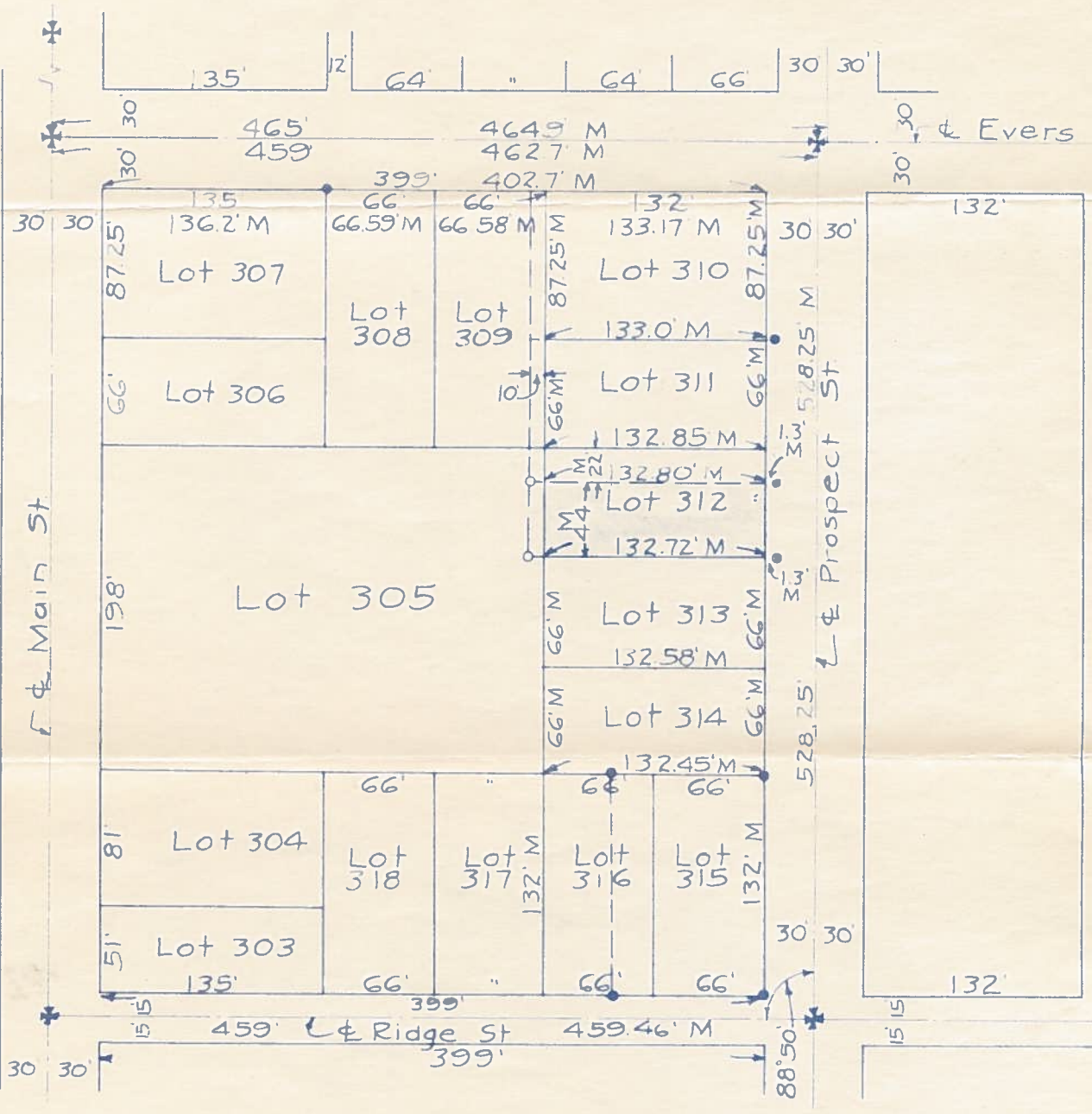


B.G. Corp. 887

Survey S 44' Lot 312 Bowling Green, Ohio



Control points found at points shown thus ✕
 Iron markers found at points shown thus •
 Iron pipe set at points shown thus ○
 Surplus prorated.

Dimensions shown on this Plat are given in feet and decimals thereof and were taken from the Original Plat, Vol. 1, Page 76, Wood County Plats, unless marked M, meaning measured on this Survey.

Surveyed by H. Morgan
 June 1959 Reg. Sur. 890

B.G. Corp. 887