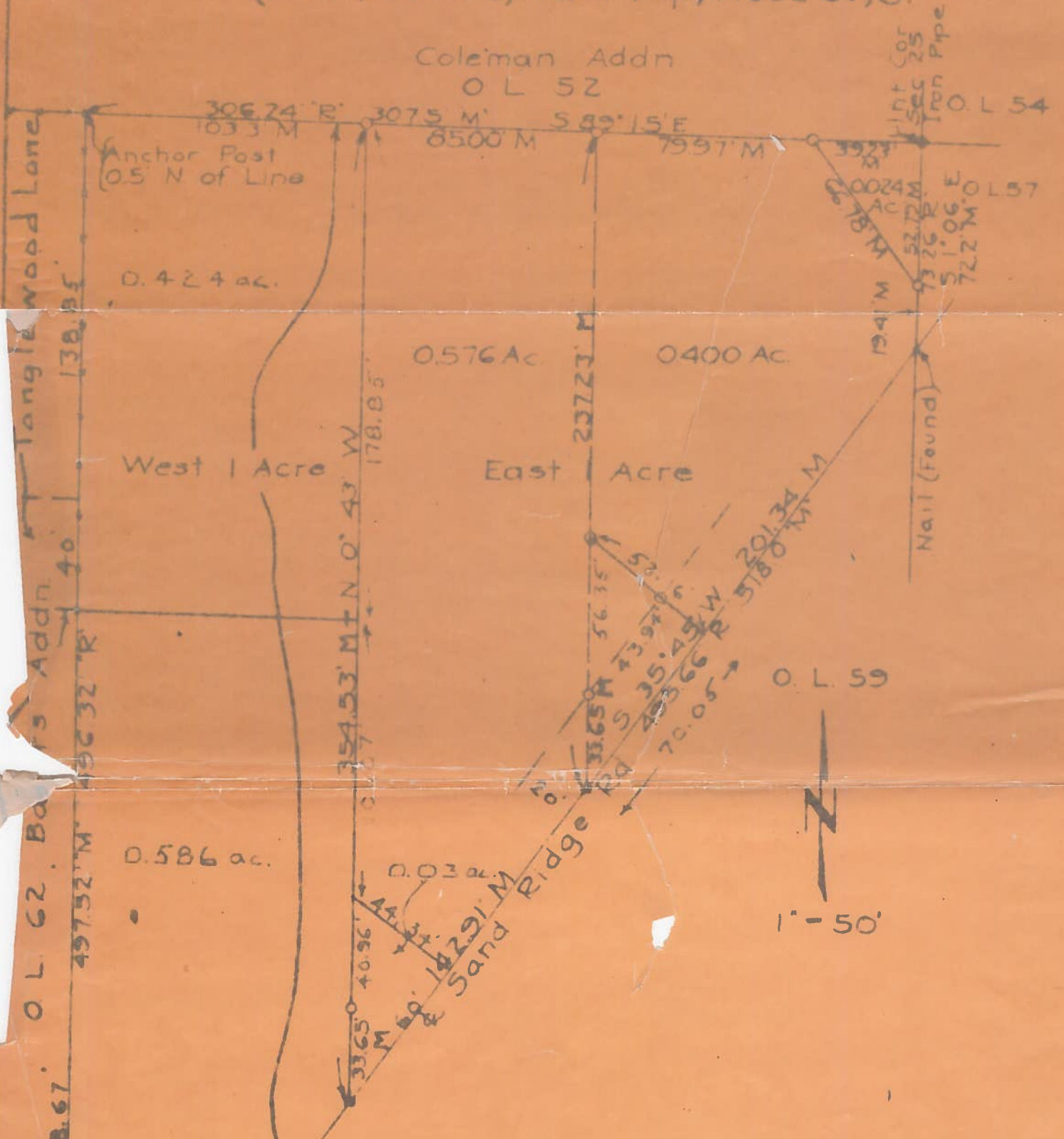


B.G. CORP. 903

Plat of Out Lot 58 Bowling Green, Ohio (SW 1/4 Sec. 25, Plain Twp, Wood Co., O.)



Dimensions given in feet and decimals thereof.
 Dimensions marked 'R' are Record.
 Dimensions marked 'M' are measured.
 Bearings shown are from Survey by Shiek in 1944.
 Iron pipe set at points shown thus \circ
 R.R. Spikes set at points shown thus \bullet

Platted by H. Morgan
 July 1957 Reg Sur. 890
 Surveyed - June, 1958
 Sept. 1960

B.G. CORP. 903

1958
 1911
 Iron Pipe Found

1011