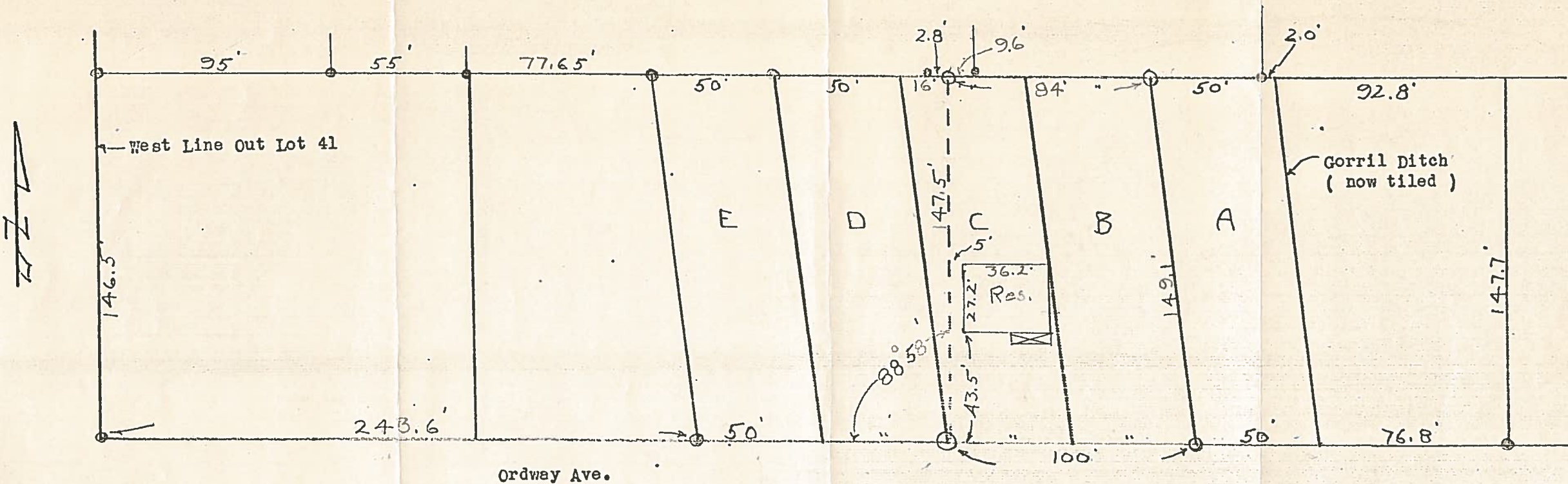


B.G.
CORP
939

Survey in the Westerly part Out Lot 41
Bowling Green, O.

B.G.
CORP
939

Parcels are drawn on this plat according to Wood County Section Map.
Parcels B and C are parcels in question.



Dashed line in parcel C would be the west line of parcel C if paralling the West Line of O L 41.
 Dashed line accepted as stated in Deed.
 Iron pipe found at points shown thus ●
 Iron pipe set at points shown thus ○

Surveyed by H. Morgan

Feb. 15, 1964 Reg. Sur. 890

2-15-64