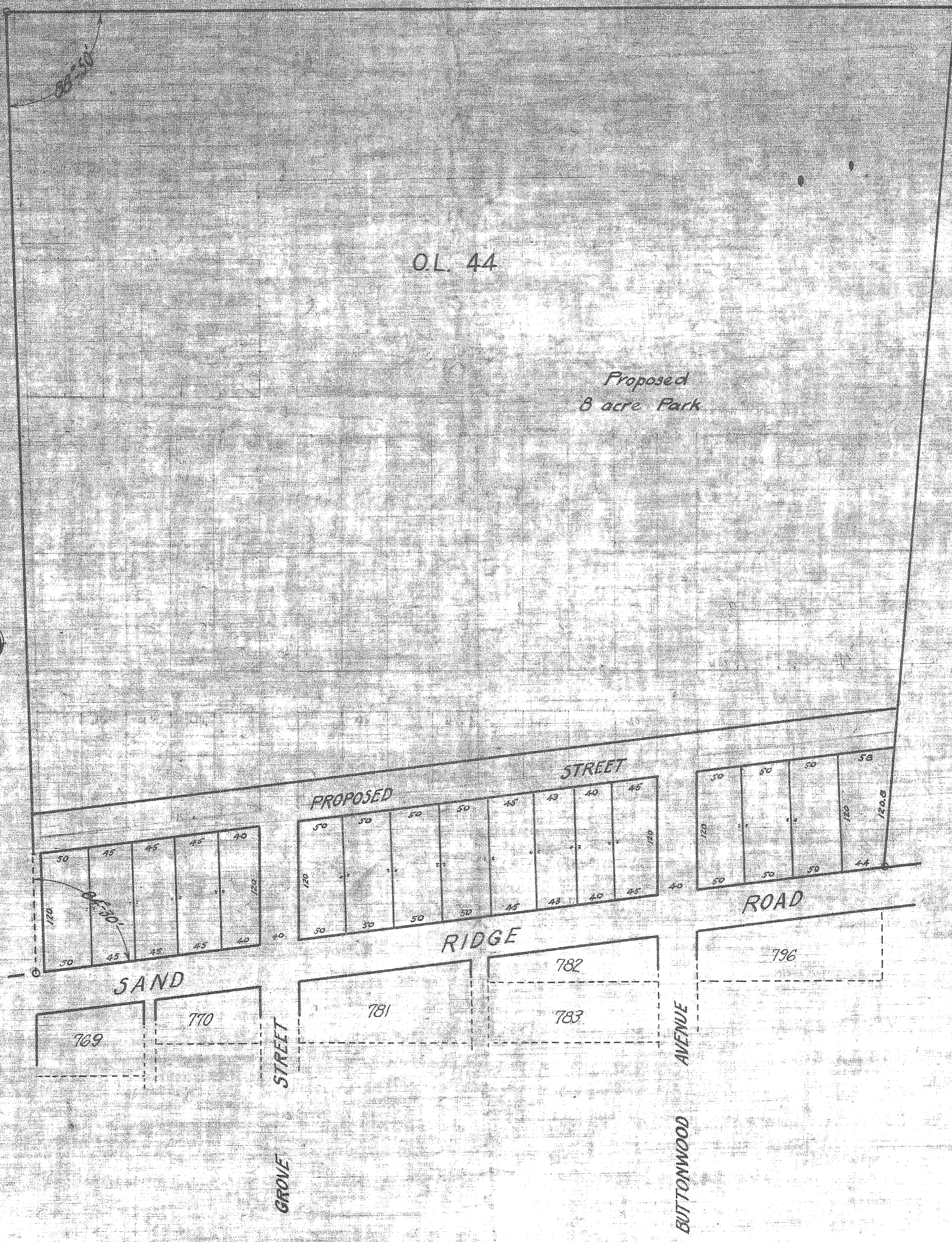


O.L. 44

Proposed  
8 acre Park



COPY

Subdivision of Outlot No. 44, Bowling Green, Ohio

This subdivision of Outlot No. 44 was surveyed by me Oct. 4 to 18, 1924 for Daniels and comprises 3.3 acres more or less. Lots are numbered from 1 to 17 inclusive. Stakes are set at all lot corners. Iron pins are set at all points marked thus  $\odot$  on the plat. Measurements are given in feet and tenths of feet. Scale of the plat - 1 in. = 100 ft.