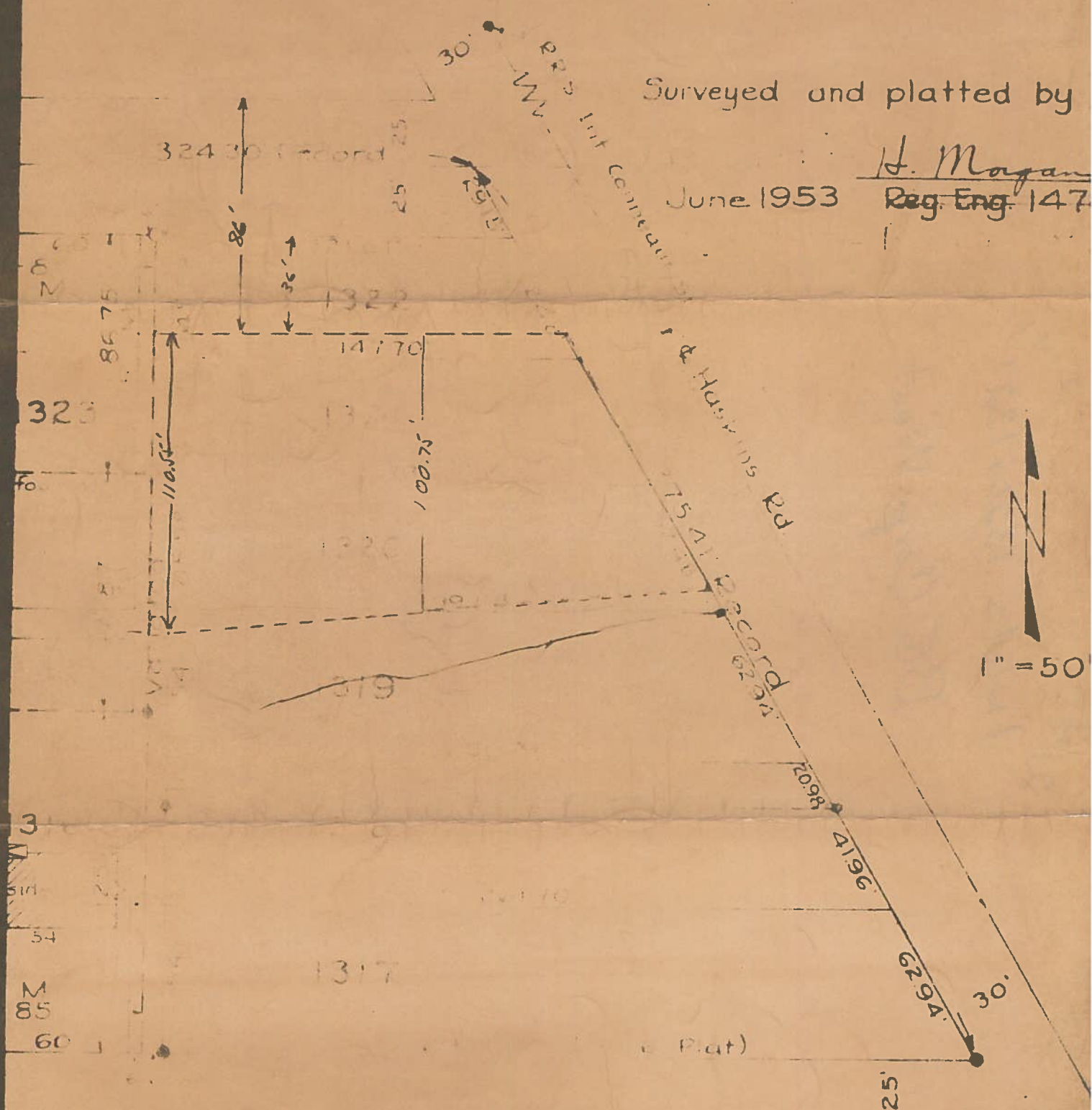


B.G. Corp  
1024

of points marked thus  
given in feet and decimals thereof  
are taken from Plat unless noted  
measured on this Survey are marked "M"  
of replatted lots shown thus

Surveyed and platted by

June 1953  
H. Morgan  
Reg. Eng. 1476



Wallace Ave  
owned by  
and find  
property

Reg. Eng. 1476

B.G. Corp  
1024