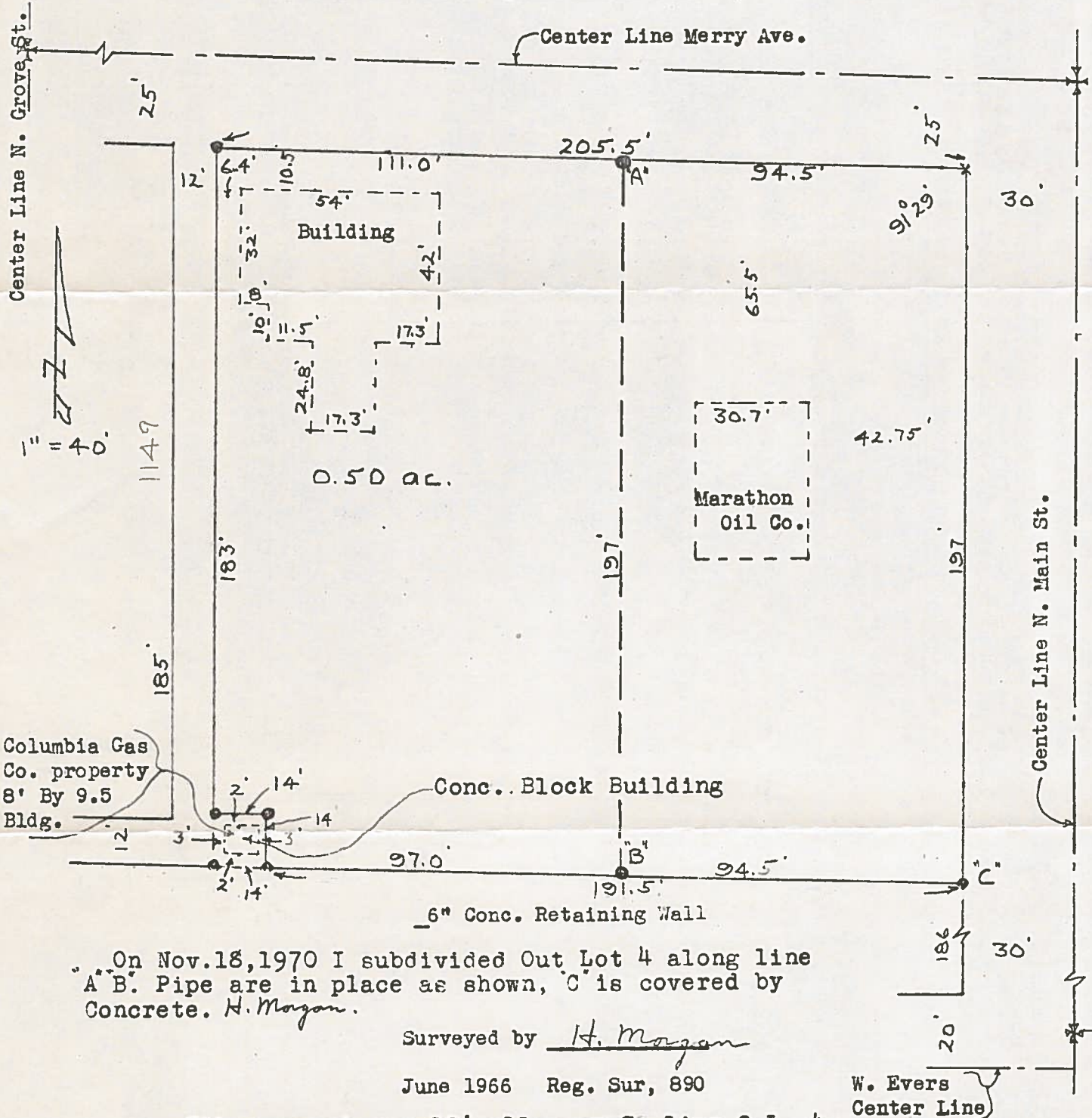


B.G. CORP 1065

SURVEY
of
Out Lot 4
Bowling Green, O.

Control points shown thus *
Iron pipe set at points shown thus ⊙
P.K. Nail set at point shown thus x



Columbia Gas Co. property 8' By 9.5 Bldg.

Conc. Block Building

Marathon Oil Co.

6" Conc. Retaining Wall

On Nov. 18, 1970 I subdivided Out Lot 4 along line A-B. Pipe are in place as shown, C is covered by Concrete. H. Morgan.

Surveyed by H. Morgan

June 1966 Reg. Sur, 890

W. Evers Center Line

City maps show a 12' alley on S. Line O.L. 4. I could find no record of alley either in the County or City Files..

B.G. CORP 1065