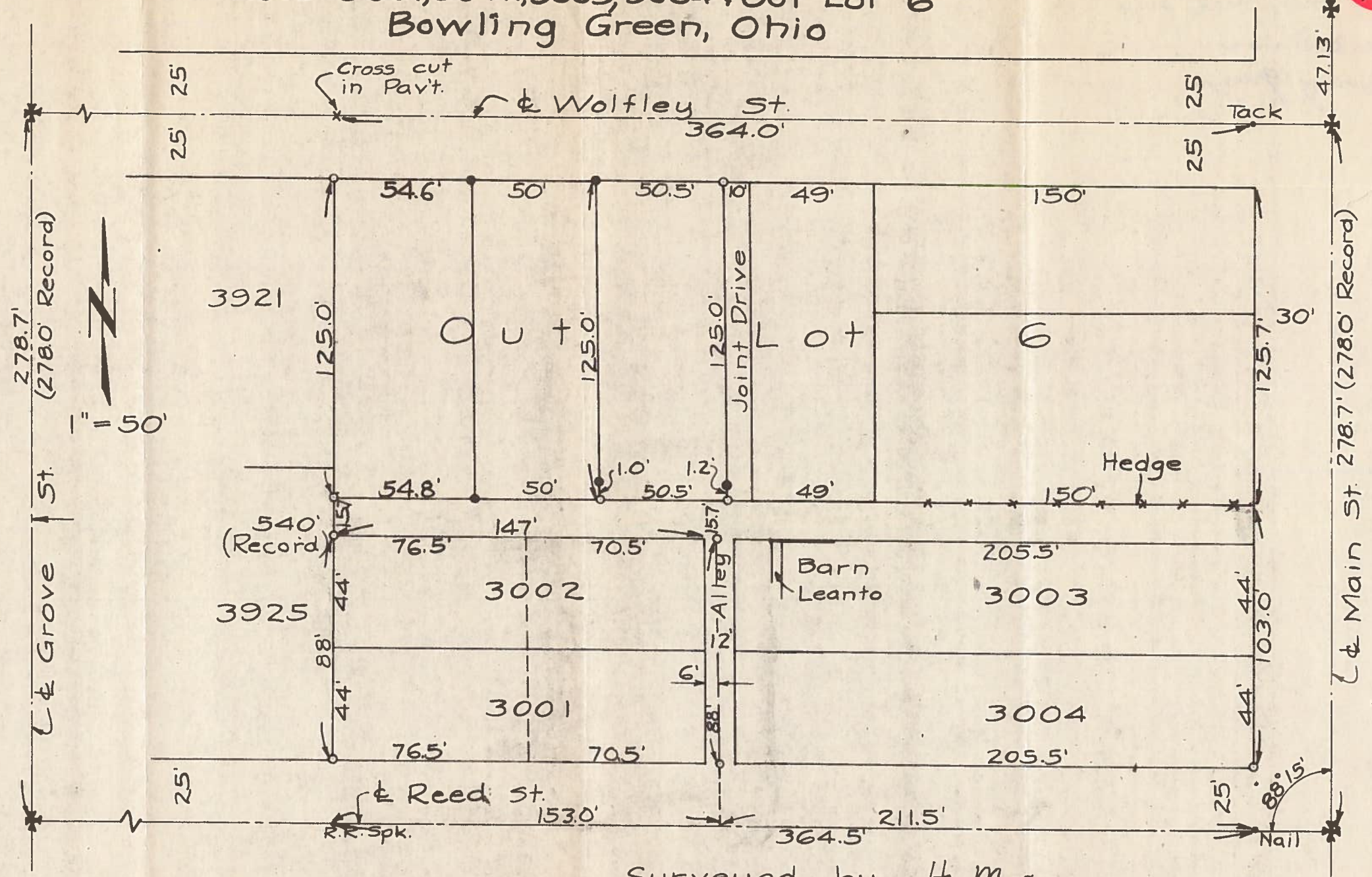


B.G.
CORP.
902

B.G.
CORP.
902

Survey Lots 3001, 3002, 3003, 3004 & Out Lot 6 Bowling Green, Ohio

* Control points shown thus
• Iron pipe found at points shown thus
○ Iron pipe set at points shown thus
○ Dimensions given in feet and decimals thereof.
Note: 0.7' surplus between Wolfley and Reed.
Reed. Parcels staked to conform with Record dimensions.



Surveyed by H. Morgan
June 1960 Reg. Sur. 890
Sept. 1960