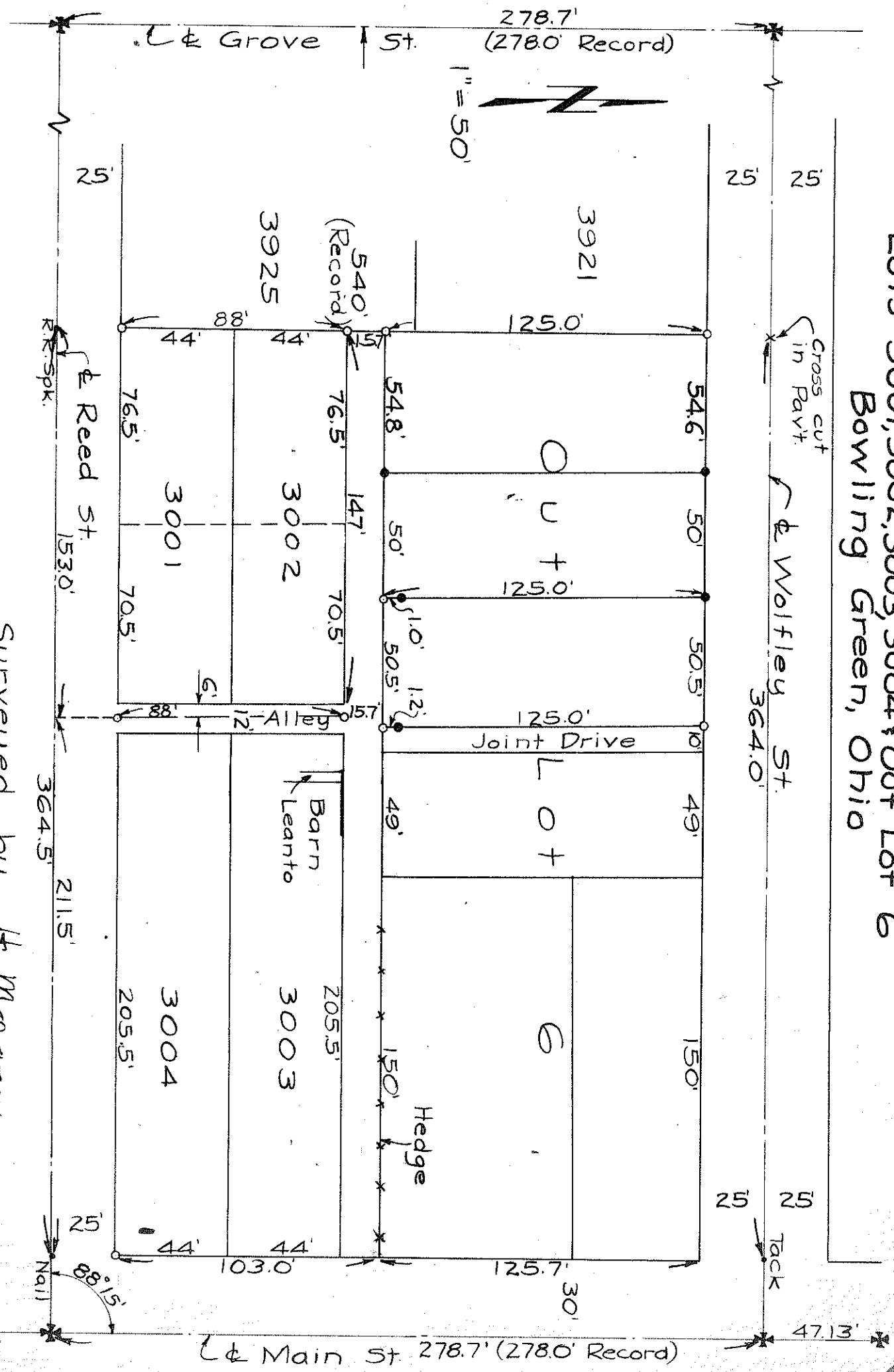


229
8.6.1960

Control points shown thus *
 Iron pipe found at points shown thus •
 Iron pipe set at points shown thus ○
 Dimensions given in feet and decimals thereof.
 Note: 0.7' surplus between Wolfley and Reed. Parcels staked to conform with Record dimensions.

Survey
 Lots 3001, 3002, 3003, 3004 & Out Lot G
 Bowling Green, Ohio



Surveyed by H. Morgan
 June 1960 Reg. 517-890
 Sept. 1960

8.6.1960
622