

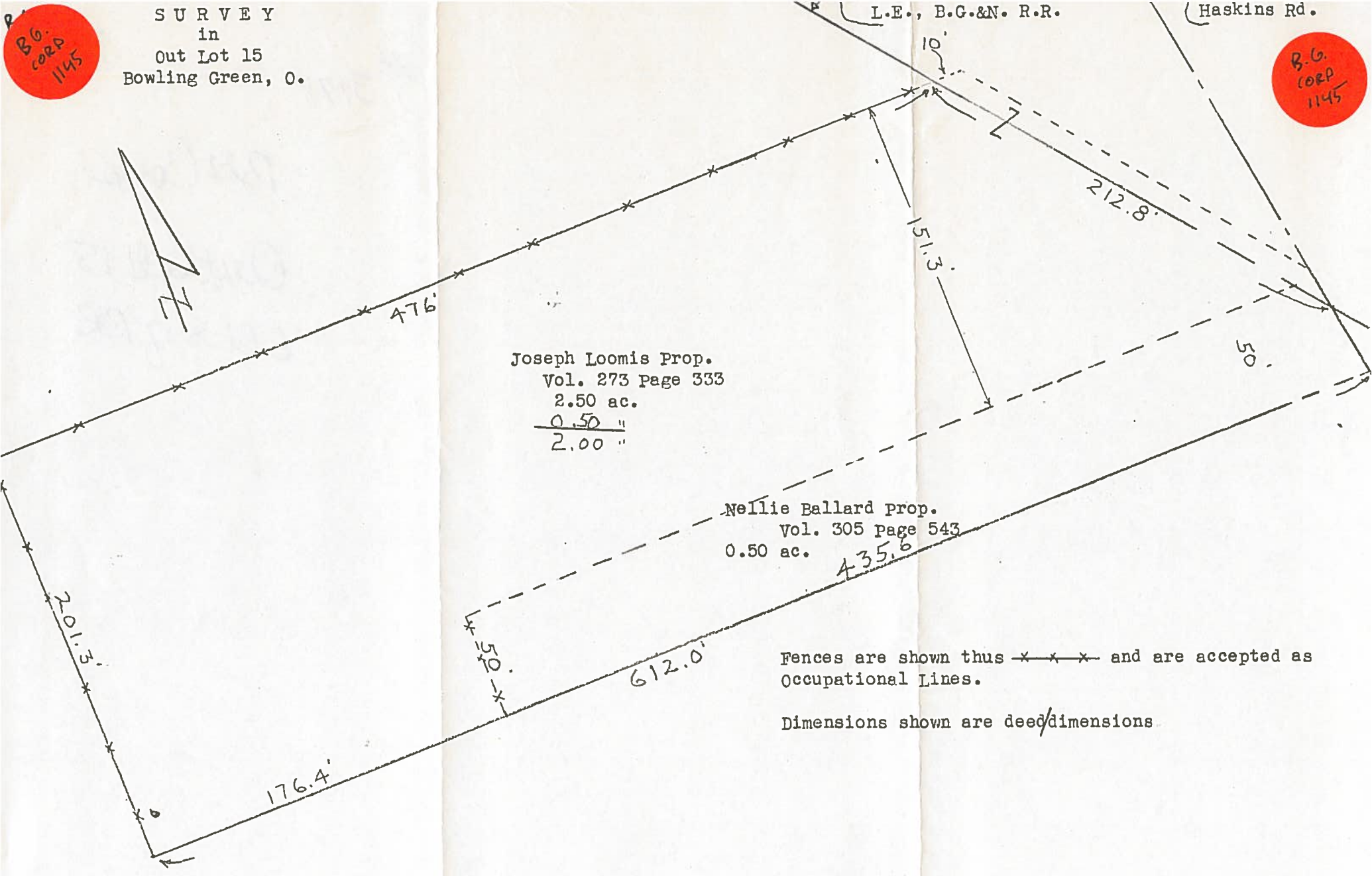
B.G.
CORP
1145

SURVEY
in
Out Lot 15
Bowling Green, O.

B.G.
CORP
1145

L.E., B.G.&N. R.R.

(Haskins Rd.)



Joseph Loomis Prop.
Vol. 273 page 333
2.50 ac.
0.50 "
2.00 "

Nellie Ballard prop.
Vol. 305 page 543
0.50 ac.
435.6

Fences are shown thus x-x-x and are accepted as Occupational Lines.

Dimensions shown are deed dimensions.