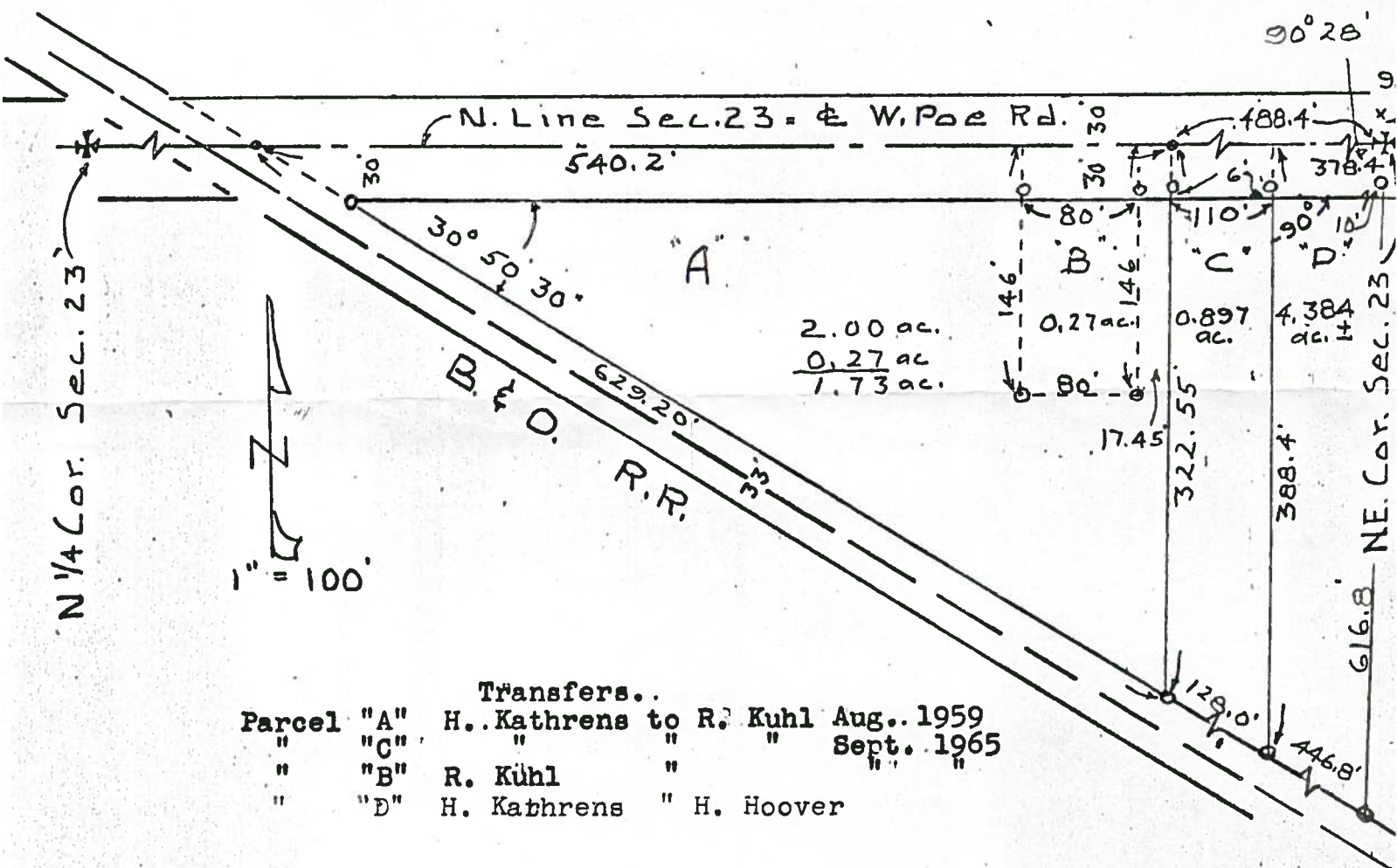


B.G. CORP 1108

SURVEY
in
N. E. 1/4 of Section 23, Plain Twp. Wo. Co. O.



Parcel	Transfers..
"A"	H. Kathrens to R. Kuhl Aug. 1959
"C"	" " " " Sept. 1965
"B"	R. Kuhl " " " "
"D"	H. Kathrens " H. Hoover

Control points found at points shown thus - - - *

R.R. Spks. set at points shown thus - - - •

Iron pipe set at points shown thus - - - - - o

Dimensions given in feet and decimals thereof.

Surveyed and platted by H. Morgan

Aug. 1959 Reg. Sur. 890
Sept. 1965
Aug 1973

Note. N.E. Cor. of Sec. 23 as set by Wood County Engineer shown thus - - - x

B.G. CORP 1108