

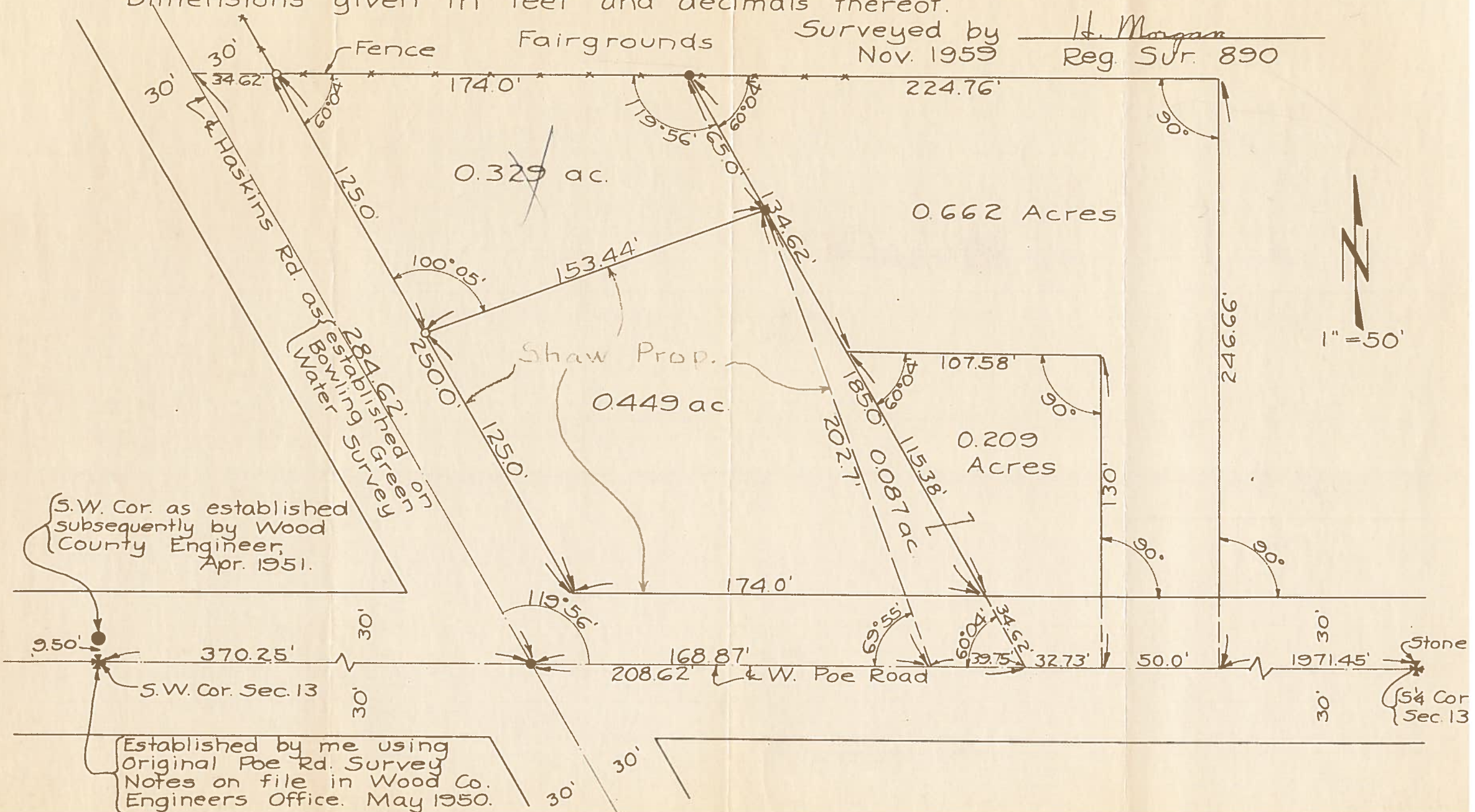
B.G.
COLP
872

892

SW 1/4, SW 1/4, Sec. 13, Plain Twp., T5 N, R 10 E, Wood County, Ohio

Iron pipe set at points shown thus ○
Iron markers found at points shown thus ●
Dimensions given in feet and decimals thereof.

Surveyed by H. Morgan
Nov. 1959
Reg. Sur. 890



S.W. Cor. as established subsequently by Wood County Engineer, Apr. 1951.

Established by me using Original Poe Rd. Survey Notes on file in Wood Co. Engineers Office. May 1950.