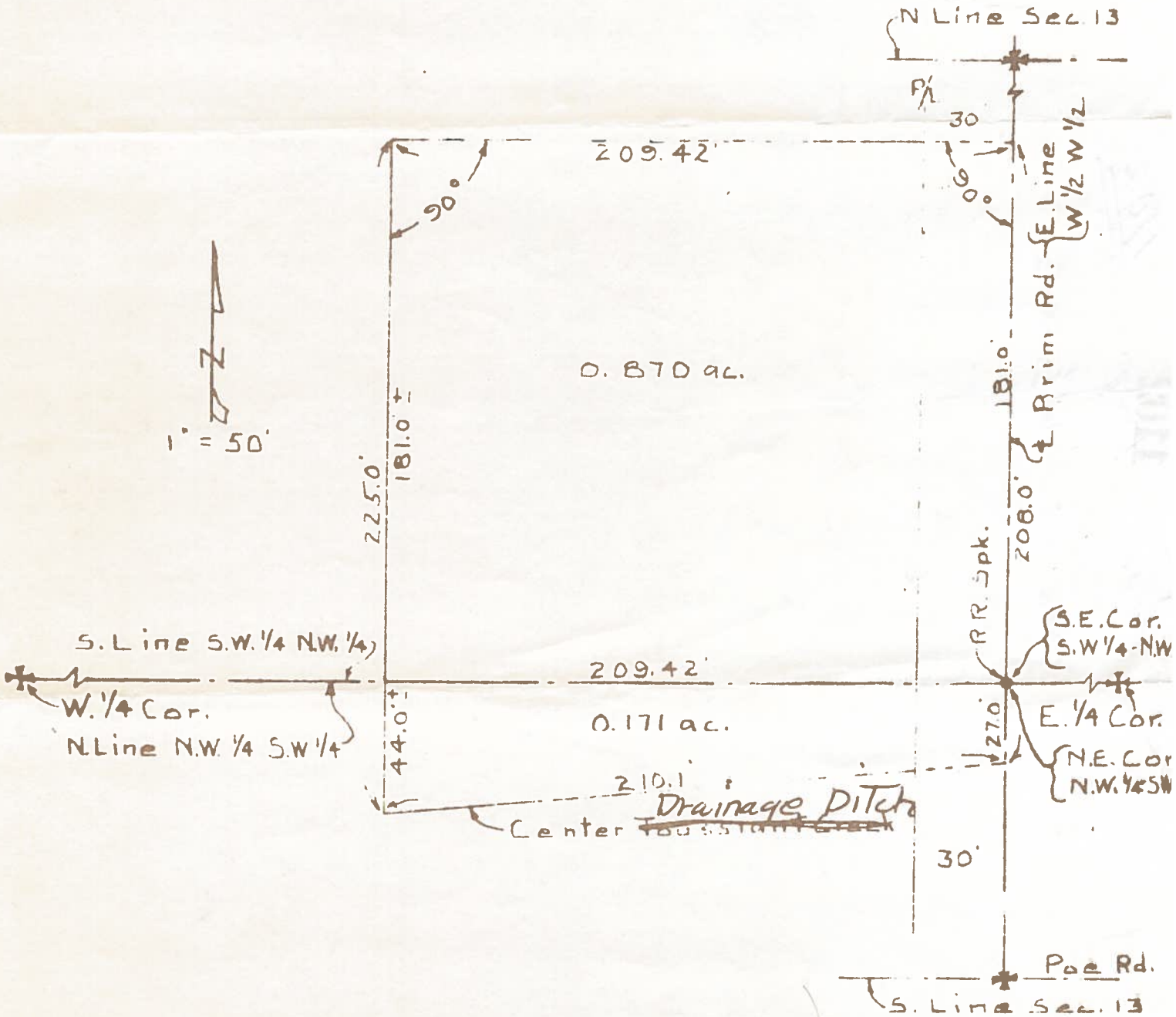


B. G. Corp 879

Survey  
in  
W. 1/2 of the W. 1/2  
of  
Sec. 13, Town 5, North Range 10 East  
Plain Township, Wood County, O.

Control Points found at points shown thus-----\*  
Railroad spike set at point shown thus-----●  
Dimensions given in feet and decimals thereof.  
Total acreage in Parcel surveyed is 1.041 acres more or less.



Surveyed by H. Morgan

Oct. 1958 Reg. Sur. 890

B. G. Corp 879