

I:\FAS\VR\Drawings\10E07849\DWG\10-07849DPOA1.dwg, 1, 5/6/2018 10:44:17 AM, jlneslick

PAVEMENT AND DRAINAGE IMPROVEMENTS
FOR

The Village at Riverbend Plat Four

MIDDLETON TOWNSHIP, WOOD COUNTY, OHIO

INDEX OF SHEETS

TITLE SHEET	1
GENERAL NOTES AND SPECIFICATIONS	2
GENERAL NOTES, SPECIFICATIONS, & GENERAL SUMMARY	3
INTERSECTION DETAILS AND STREET SIGNING PLAN	4
TYPICAL SECTIONS AND DETAILS	5
SITE GRADING PLAN	6
PLAN & PROFILE	7
CROSS SECTIONS	8-12

BENCH MARK DATA

SITE BENCH MARK #200

CENTER OF STORM MANHOLE LID AT STA. 40+99.83, 31.22 RT.,
SUNSET MAPLE DRIVE.

ELEVATION 643.09

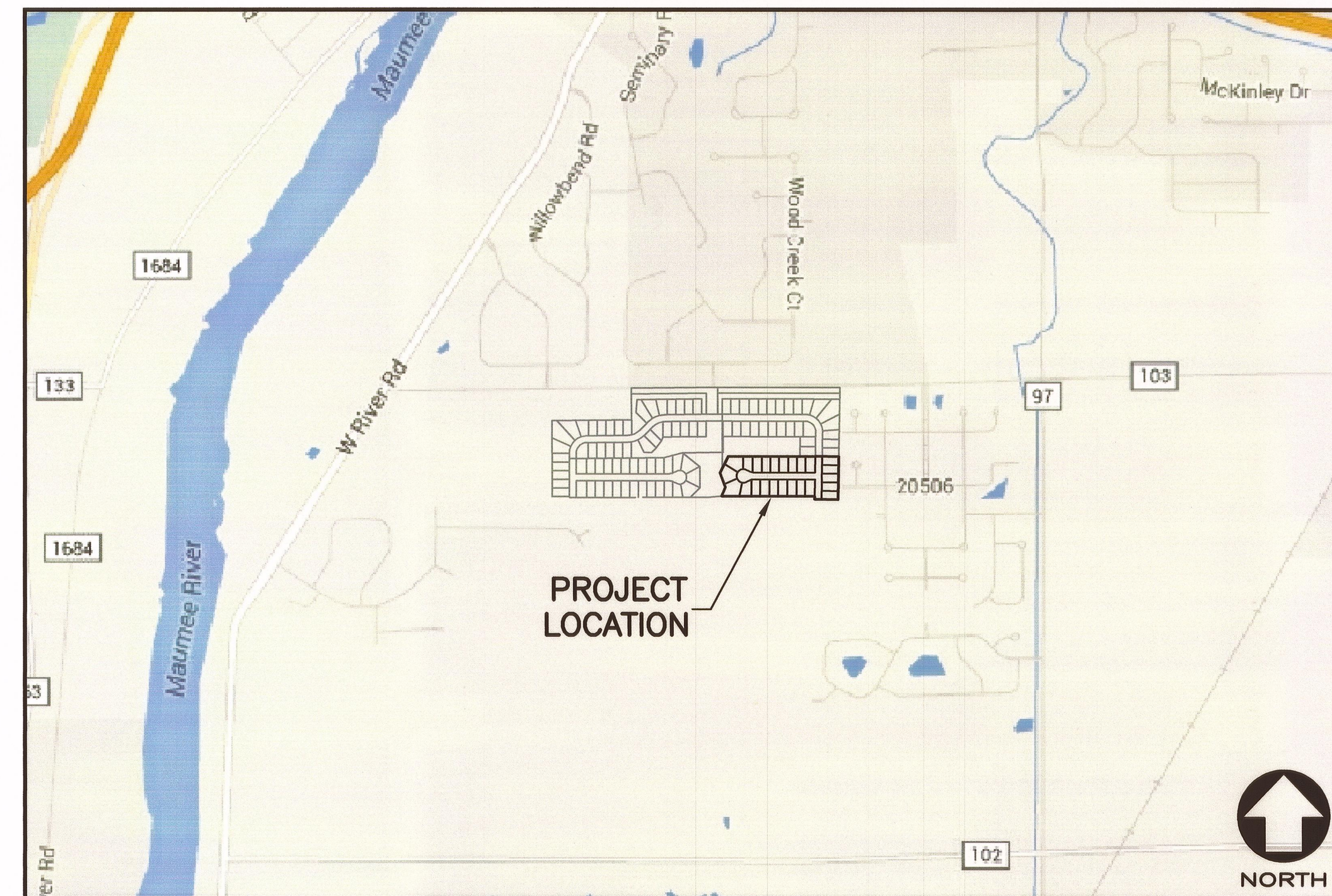
SITE BENCH MARK #201

"X" CUT ON WEST END OF HEADWALL, 7.2' SOUTH OF THE
CENTERLINE OF ROACHTON ROAD AND 662.2' WEST OF THE
CENTERLINE OF HIGH MEADOWS LANE.

ELEVATION 639.54

CONVENTIONAL SIGNS

	PROPOSED	EXISTING
SANITARY SEWER	—S—	—S—
STORM SEWER	—ST—	—ST—
WATERLINE	—W—	—W—
SANITARY MANHOLE	●	⊙
STORM MANHOLE	●	⊙
CATCH BASIN	■	⊞
YARD BASIN	●	⊙
WATER VALVE IN MANHOLE	●	⊙
HYDRANT	⬮	⬮
CENTERLINE	—	—
TYPE B MONUMENT	⊙	⊙



LOCATION MAP
SCALE: 1" = 1,000'



OHIO UTILITIES
PROTECTION SERVICE
CALL 1-800-362-2764
TWO WORKING DAYS
BEFORE YOU DIG
NON-MEMBERS MUST BE
CALLED DIRECTLY

INSPECTION SCHEDULING

FOR INSPECTION CALL 419-354-9060
BETWEEN 7:30 A.M. AND 4:00 P.M.
48 HOURS IN ADVANCE. IT IS THE
RESPONSIBILITY OF THE CONTRACTOR.

STANDARD DRAWINGS

ODOT

CB-2.2	CATCH BASIN NO. 3A	1/17/14
MH-1.2	MANHOLE NO. 3	1/18/13
RM-1.1	ROADWAY MONUMENTS	7/18/14
BP-5.1	CONCRETE CURB, TYPE 6	7/19/13

SUPPLEMENTAL SPECIFICATIONS (ODOT)

SS 800	REVISIONS TO 2013 ODOT CMS	1/21/15
SS 811	CONDUIT AND DRAINAGE STRUCTURES	1/18/13

WOOD COUNTY: (<http://engineer.co.wood.oh.us/index.php/standard-drawings>)

TRENCH DETAILS	8/05/14
TYPE A AND B MONUMENT ASSEMBLIES	8/05/14
STANDARD BARRICADE AND TURN AROUNDS	8/05/14

SCALES

PLAN	1" = 50'
PROFILE, HORIZONTAL	1" = 50'
PROFILE, VERTICAL	1" = 5'
CROSS-SECTION, HORIZONTAL	1" = 20'
CROSS-SECTION, VERTICAL	1" = 5'

APPROVED BY

JOHN M. MUSTERIC, P.E., P.S.
WOOD COUNTY ENGINEER

05.23.2018
DATE

THE ABOVE SIGNATURE CONSTITUTES ACKNOWLEDGEMENT THAT THOSE ITEMS
OUTLINED IN THE CURRENT EDITION OF THE "WOOD COUNTY SUBDIVISION
AND SITE IMPROVEMENT MANUAL" OR AS AMENDED BY THE WOOD COUNTY
ENGINEER, HAVE BEEN UTILIZED. TECHNICAL CORRECTNESS AND
INTERPRETATION OF THOSE ITEMS CONTAINED WITHIN THE MANUAL REMAIN
THE RESPONSIBILITY OF THE ENGINEER PREPARING THE PLANS. THE
ABOVE SIGNATURE IS VALID FOR 18 MONTHS FROM THE DATE OF SIGNING.

DEVELOPED BY:

MCCARTHY RIVERBEND, LLC
3618 KING ROAD, SUITE C
TOLEDO, OHIO 43617
419-476-1474

NAME
PRESIDENT

5-9-18
DATE

REVISION	DATE

TITLE SHEET

THE VILLAGE AT RIVERBEND
PLAT FOUR

TITLE:

PROJECT:



SIGNED:
DATE: 5/9/18

DESIGNED BY: CMG
DRAWN BY: RGS
CHECKED BY: GNF
REVIEWED BY: DRK

DATE: 4-13-18
PROJECT: 10E07849

1
12