

Get when you
do the PRATT
DITCH

SURVEY REQUEST FORM

NAME: Kevin Laughlin

DATE OF REQUEST: 1/13/17

TOWNSHIP: Middleton

T N, R E or USR

SECTION: River Tract 55

R/W WIDTH:

ROAD NAME:

DITCH NUMBER:

STRUCTURE NUMBER:

DESCRIPTION OF WORK: (ROAD, DITCH, CULVERT PROJECT)

Topo and locations/elevations of pond at Village at
River bend

DETAIL OF SURVEY NEEDED: (CROSS-SECTION INTERVAL, UPSTREAM-DOWNSTREAM, ETC.)

Perimeter of the pond with top of bank elevations.
As built of weir structure and spillway. Esp. top of weir and
water quality orifices. Water elevation level. If water level
is low enough where pond inlets are located.

SPECIAL REQUIREMENTS: See ~~man~~ me for questions

SURVEY CREW USE ONLY

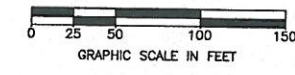
REMARKS:

DATE COMPLETED: 2-6-2017 (AS)

BENCH MARK DATA

SITE BENCH MARK #200
 NORTH RIM OF MONUMENT BOX.
 ELEVATION 643.17

SITE BENCH MARK #201
 "X" CUT ON WEST END OF HEADWALL.
 ELEVATION 639.54



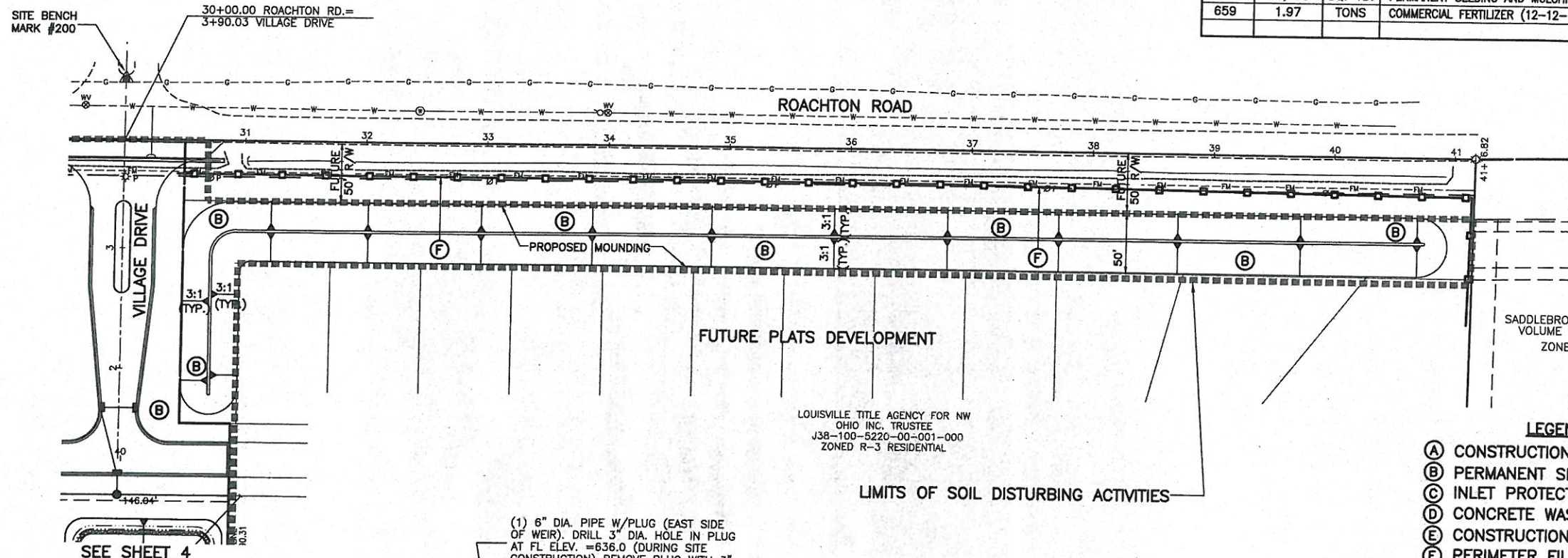
FELLER, FINCH & ASSOCIATES, INC.			
REVISION	DATE	DESIGN BY: CMG	
		DRAWN BY: RGS	
		DATE: 8-08-15	
		CHK'D BY: GNF	
		DRAWING NO: 07849SWP301A	

SUMMARY INFORMATION FOR SEDIMENT BASIN VERSUS PERMANENT STORMWATER FACILITY

CONTRIBUTING DRAINAGE AREA (AC.)	SEDIMENT BASIN				PERMANENT STORMWATER FACILITY			
	DEWATERING VOLUME (CU. YD.)	SEDIMENT STORAGE VOLUME (CU. YD.)	DETENTION TIME MIN. 48 HR. (HOURS)	SEDIMENT CONTROL ORIFICE SIZE (INCHES)	WATER QUALITY VOLUME-WQV (CU. YD.)	PERMANENT POOL VOLUME (CU. YD.)	DETENTION TIME (HOURS)	WQV ORIFICE SIZE (SQ. IN.)
15.626	32,294	16,050	53.7	3"	364	13,178	24	28.2

GENERAL SUMMARY

ITEM	QTY.	UNIT	DESCRIPTION
EROSION CONTROL			
SPEC.	LUMP	LUMP	TEMPORARY CONSTRUCTION ENTRANCE, AS PER PLAN
SPEC.	LUMP	LUMP	CONCRETE WASHOUT AREA
832	200	FT.	INLET PROTECTION FILTER FABRIC FENCE
832	2800	FT.	PERIMETER FILTER FABRIC FENCE
SPEC.	9	EACH	CURB INLET PROTECTION
832	29,040	SQ. YD.	CONSTRUCTION SEEDING AND MULCHING
659	21,835	SQ. YD.	PERMANENT SEEDING AND MULCHING (R/W, SWALES & MOUNDS)
659	1.97	TONS	COMMERCIAL FERTILIZER (12-12-12) (20 LBS./1,000 SQ. FT.)

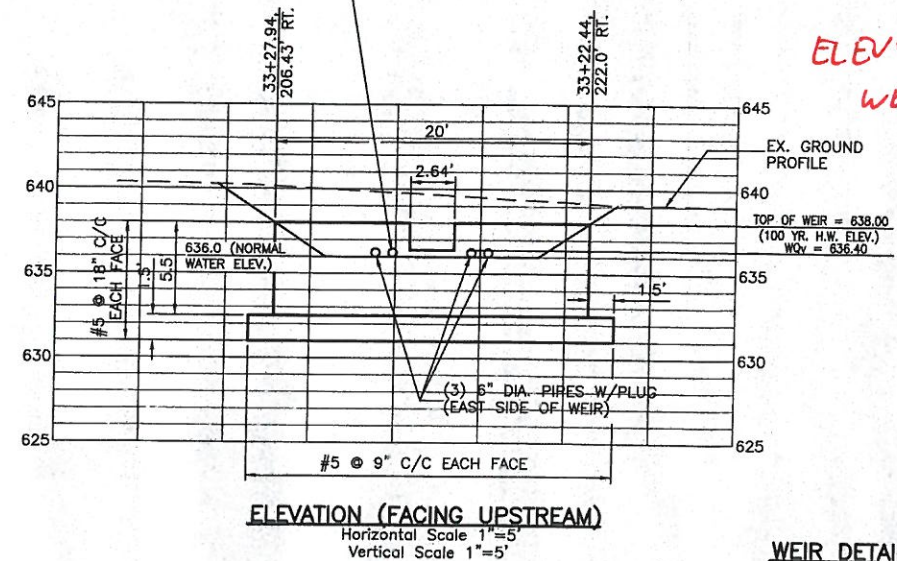
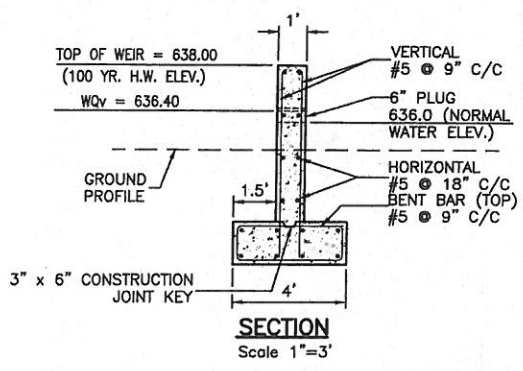


SADDLEBROOK PLAT TWELVE
 VOLUME 23, PAGE 572
 ZONED R-3

LOUISVILLE TITLE AGENCY FOR NW
 OHIO INC. TRUSTEE
 J38-100-5220-00-001-000
 ZONED R-3 RESIDENTIAL

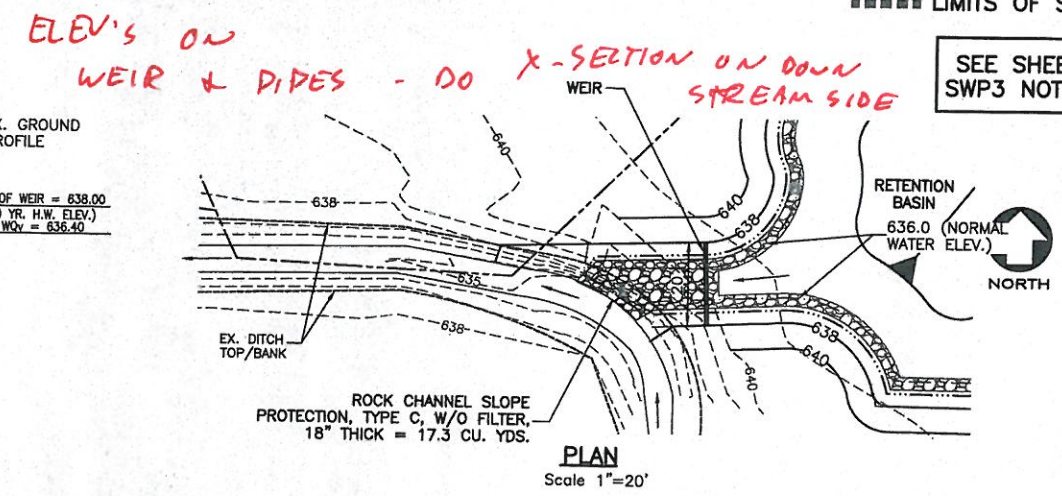
- LEGEND**
- (A) CONSTRUCTION SEEDING AND MULCHING
 - (B) PERMANENT SEEDING AND MULCHING
 - (C) INLET PROTECTION FILTER FABRIC FENCE
 - (D) CONCRETE WASHOUT AREA
 - (E) CONSTRUCTION ENTRANCE
 - (F) PERIMETER FILTER FABRIC FENCE
 - (G) GRAVEL CURB INLET SEDIMENT FILTER
 - LIMITS OF SOIL DISTURBING ACTIVITIES

SEE SHEETS 2 & 3 FOR SWP3 NOTES AND DETAILS.



WEIR DETAILS

THE PRICE BID FOR ITEM 602, CONCRETE MASONRY (WEIR) SHALL INCLUDE ALL LABOR, EQUIPMENT AND MATERIALS TO INSTALL THE WEIR INCLUDING CONCRETE MASONRY, 6" PIPES, PLUGS AND REBAR AS INDICATED.



ELEV'S ON WEIR & PIPES - DO X-SECTION ON DOWN STREAM SIDE

BY: 1-27-2017