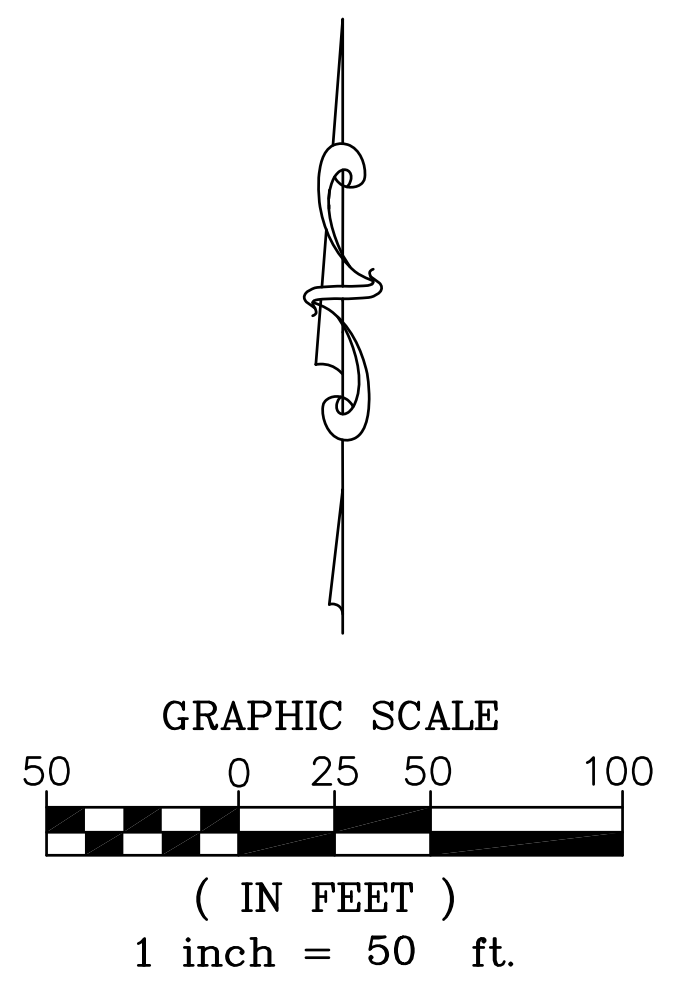
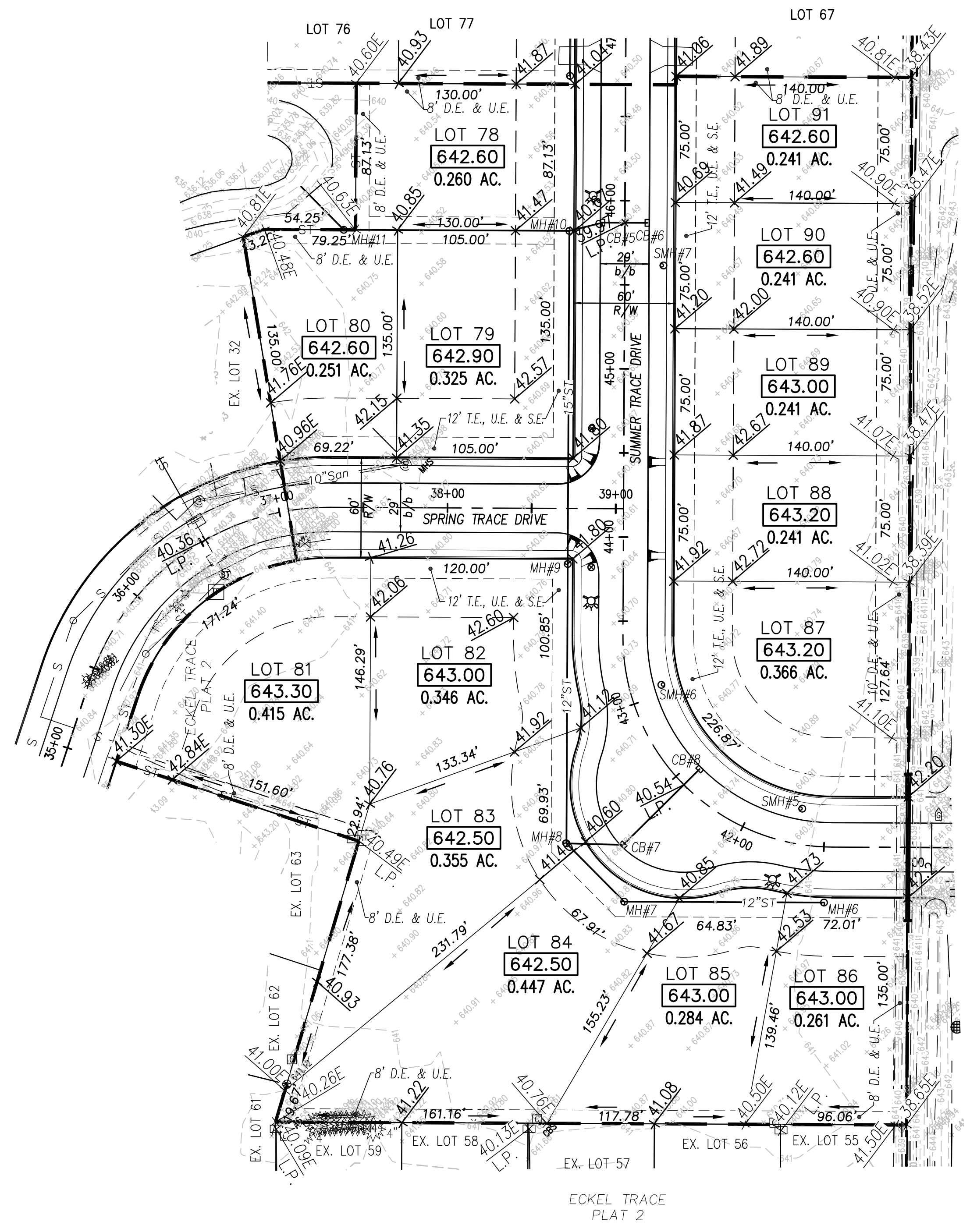
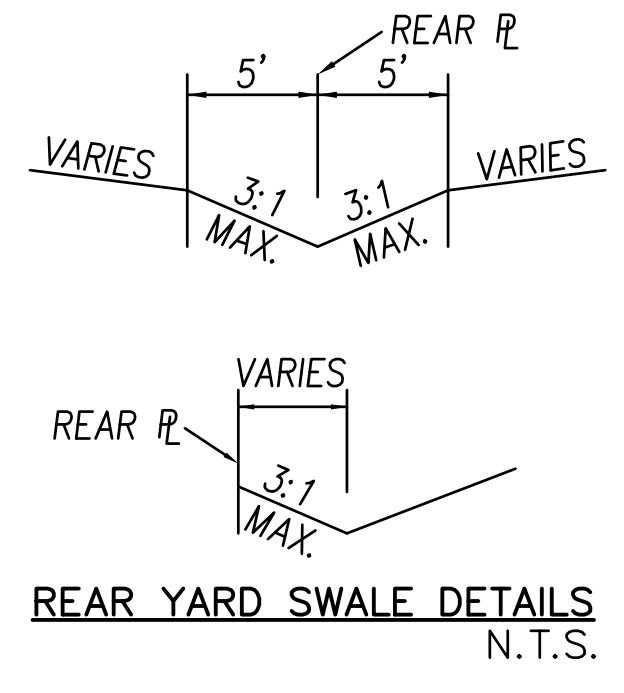
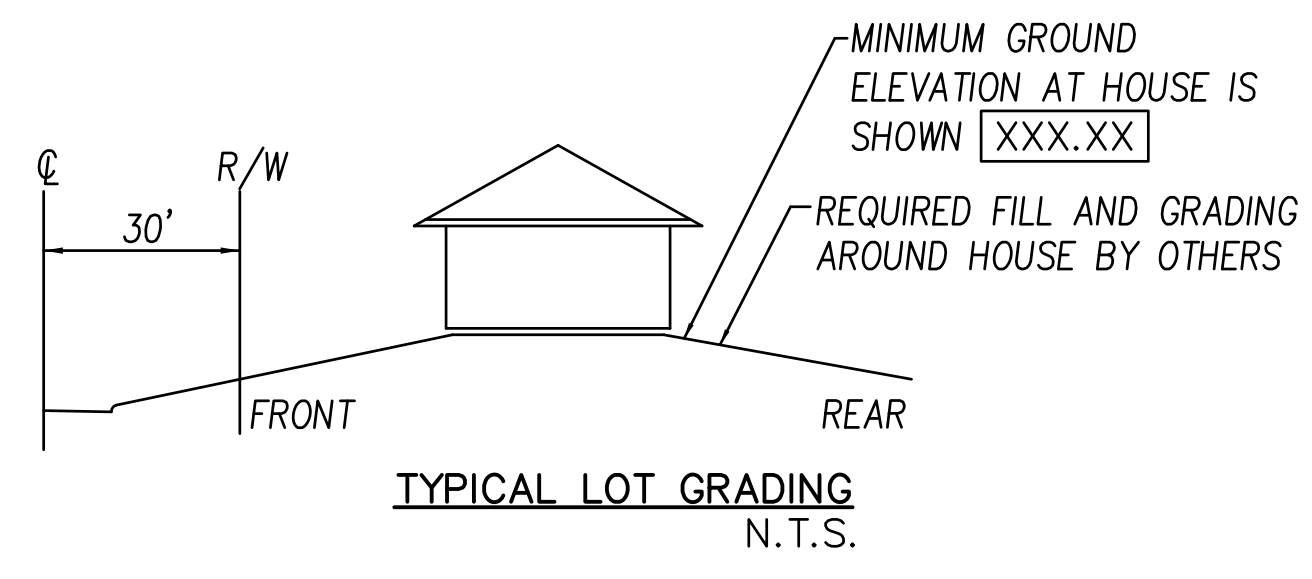


STA. 48+33.99, SUMMER TRACE DR. =
 STA. 18+35.81, BAY TRACE DR.



LEGEND

- XXX.XX PROPOSED "GROUND GRADE ELEVATIONS" AT HOUSE
- SURFACE DRAINAGE FLOW DIRECTION
- YD YARD CATCH BASIN
- ST STORM SEWER
- STMH STORM MANHOLE
- CB CATCH BASIN
- RIM RIM ELEVATION
- T/C TOP OF CURB
- R/W RIGHT-OF-WAY
- b/b BACK OF CURB TO BACK OF CURB
- D.E. DRAINAGE EASEMENT
- ⊗ EXISTING MON. ASSEMBLY FROM PRIOR PLAT
- ⊗ WOOD COUNTY TYPE A MON. ASSEMBLY
- ⊕ ODOT RM-1.1 MONUMENT ASSEMBLY
- U.E. UTILITY EASEMENT
- S.W.E. SIDEWALK EASEMENT
- S.E. SANITARY EASEMENT
- T.E. TOLEDO EDISON EASEMENT
- 000.00 EXISTING SPOT ELEVATION
- 000— EXISTING CONTOUR ELEVATION
- x00.00 PROPOSED ELEVATIONS
- x00.00 PROPOSED HIGH POINT
- x00.00 PROPOSED LOW POINT
- x00.00 PROPOSED ELEVATION = EXISTING



NOTE:
 ADD 600.00 TO ALL ELEVATIONS SHOWN AS XX.XX.

THE CONTRACTOR SHALL CLEAR AND GRADE ALL REAR LOT LINES FOR PIPES, UTILITIES AND DRAINAGE.

NOTE:
 WHERE THE ROADWAY HAS A WIDTH OF 29' B/B, T/C ELEVATIONS ON BOTH SIDES OF THE ROAD ARE 0.06' HIGHER THAN THE LISTED @ ELEVATIONS. CONSULT INTERSECTION DETAILS FOR T/C ELEVATIONS IN THOSE AREAS.

REAR YARD DRAINAGE SWALES:
 REAR YARD CATCH BASINS SHALL BE CONSTRUCTED AND REAR YARD SWALES GRADED AT THE TIME THE DEVELOPMENT'S STORM DRAINAGE AND PAVEMENT IS CONSTRUCTED. SWALES SHALL BE SEEDED, MULCHED AND FERTILIZED AS SOON AS WEATHER PERMITS. CATCH BASIN SEDIMENT BARRIERS SHALL BE PLACED AROUND ALL REAR YARD CATCH BASINS.

BENCH MARK DATA
 NORTH BONNET BOLT ON FIRE HYDRANT STA. 8+44.82, 246.15' LT, BAY TRACE DRIVE ELEVATION.....644.03

BENCH MARK DATA
 NORTH BONNET BOLT ON FIRE HYDRANT STA. 12+15.35, 17.27' LT, BAY TRACE DRIVE ELEVATION.....643.03

Plot Date: 1/5/2016 9:38 AM File Name: 10 of 25 Site Grading Plan ECKEL Trace Plats 3, 4 & 5.dwg

DRAWING OF RECORD DECEMBER 2015