

EAST POND CONTRIBUTING AREA = 29.16 ACRES
 SEDIMENT VOLUME REQUIRES = 12,632 CF
 SEDIMENT VOLUME PROVIDED = 55,762 CF

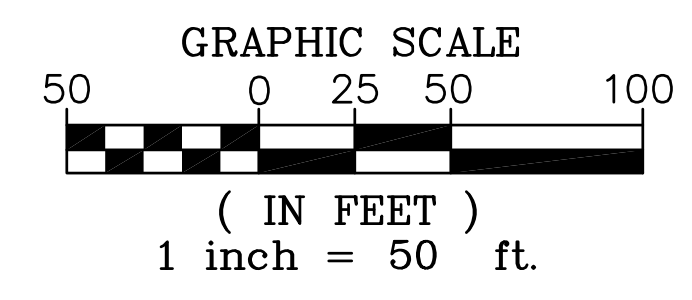
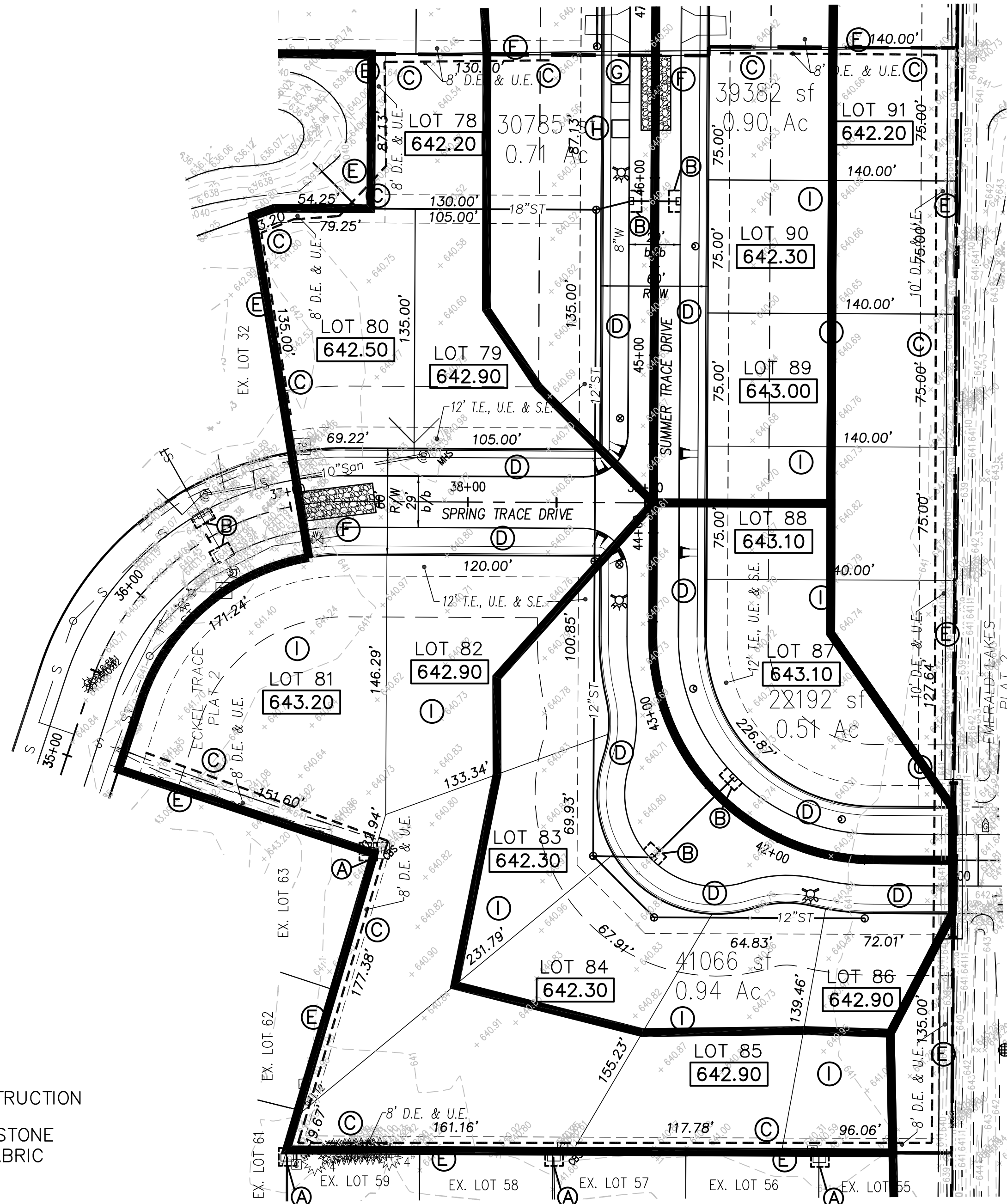
LEGEND

- | | | | | | |
|----------|--|---------------|-------------------------------------|---------------|---|
| XXX.XX | PROPOSED "GROUND GRADE ELEVATIONS" AT HOUSE | [Hatched Box] | LIMITS OF EARTH DISTURBING ACTIVITY | [Hatched Box] | AGGREGATE CONSTRUCTION ENTRANCE |
| → | SURFACE DRAINAGE FLOW DIRECTION | | | | 6" OF #2 OR #3 STONE ON GEOTEXTILE FABRIC |
| YD | YARD CATCH BASIN | | | | |
| ST | STORM SEWER | | | | |
| STMH | STORM MANHOLE | | | | |
| CB | CATCH BASIN | | | | |
| RIM | RIM ELEVATION | | | | |
| T/C | TOP OF CURB | | | | |
| R/W | RIGHT-OF-WAY | | | | |
| b/b | BACK OF CURB TO BACK OF CURB | | | | |
| D.E. | DRAINAGE EASEMENT | | | | |
| [Symbol] | EXISTING MON. ASSEMBLY FROM PRIOR PLAT | | | | |
| [Symbol] | WOOD COUNTY TYPE A MON. ASSEMBLY | | | | |
| [Symbol] | ODOT RM-1.1 MONUMENT ASSEMBLY | | | | |
| U.E. | UTILITY EASEMENT | | | | |
| S.W.E. | SIDEWALK EASEMENT | | | | |
| S.E. | SANITARY EASEMENT | | | | |
| T.E. | TOLEDO EDISON EASEMENT | | | | |
| 000.00 | EXISTING SPOT ELEVATION | | | | |
| —000— | EXISTING CONTOUR ELEVATION | | | | |
| x00.00 | PROPOSED ELEVATIONS | | | | |
| x00.00 | PROPOSED HIGH POINT | | | | |
| x00.00 | PROPOSED LOW POINT | | | | |
| x00.00 | PROPOSED ELEVATION = EXISTING | | | | |
| | ADD 600.00 TO ALL ELEVATIONS SHOWN AS XX.XX. | | | | |

EROSION CONTROL LEGEND

- (A) * YARD DRAIN SEDIMENT BARRIER
 - (B) * CURB INLET SEDIMENT BARRIER
 - (C) * FILTER FABRIC FENCE
 - (D) PERMANENT SEEDING & MULCHING
 - (E) MAINTAIN EXISTING VEGETATION
 - (F) * CONSTRUCTION ENTRANCE DETAIL
 - (G) * CONCRETE WASHOUT AREA
 - (H) DUMPSTER LOCATION / VEHICLE FUELING
 - (I) TEMPORARY STABILIZATION AS NEEDED (TEMPORARY SEEDING & MULCHING BETWEEN R/W & REAR YARD EASEMENTS)
- * SEE SHEET 7 OF 25 FOR DETAILS.

STA. 48+33.99, SUMMER TRACE DR. = STA. 18+35.61, BAY TRACE DR.



NOTE:
 THE CONTRACTOR SHALL INSTALL AND MAINTAIN A "GRAVEL CONSTRUCTION ENTRANCE" WHERE PROPOSED ROAD MEETS EXISTING ROAD. IT SHALL CONSIST OF A MINIMUM OF 6" OF 2" TO 3" SIZE STONE, 20 FEET WIDE AND 70 FEET IN LENGTH. THE LUMP SUM PRICE BID FOR ITEM 832 "EROSION CONTROL, CONSTRUCTION ENTRANCE" SHALL INCLUDE ALL COSTS FOR INSTALLATION AND REMOVAL AS REQUIRED.

NOTE:
 TEMPORARY EROSION CONTROL SHALL BE IN ACCORDANCE WITH ODOT STANDARD CONSTRUCTION DRAWINGS DM-4.3 AND DM-4.4 AND ITEM 832.

Plot Date: 1/2/2016 9:34 AM
 File Name: 6 of 25 SWP3 Eckel Trace Plat 3, 4 & 5.dwg