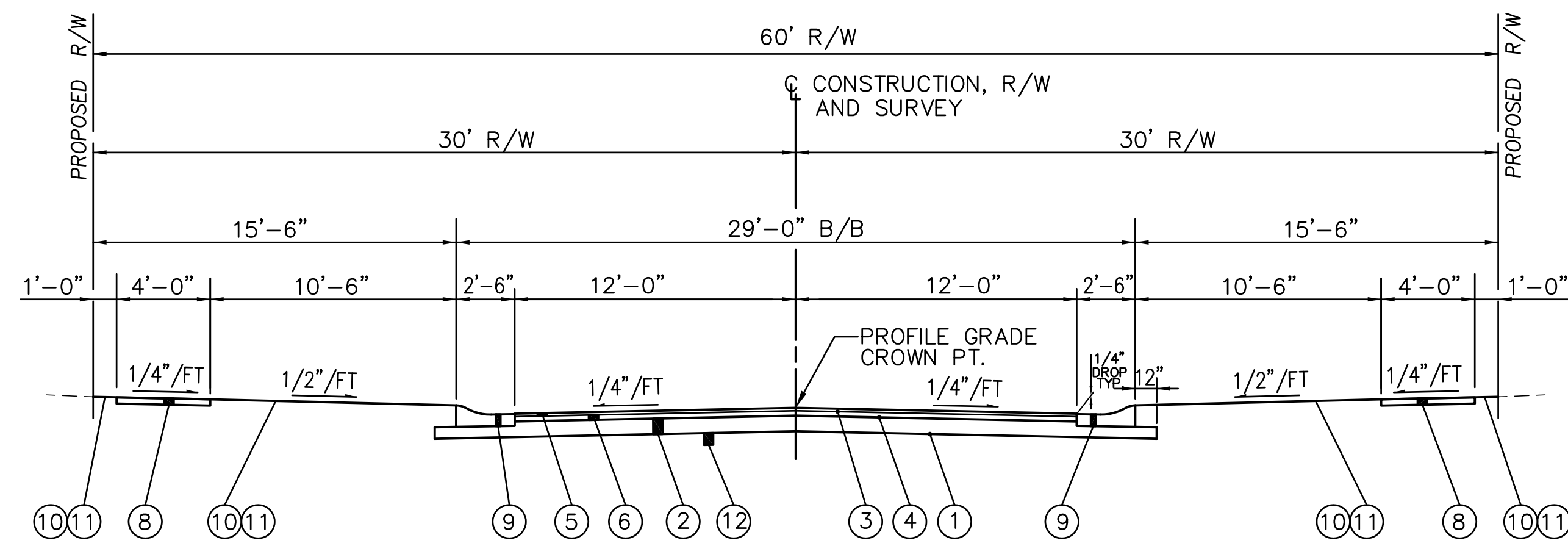
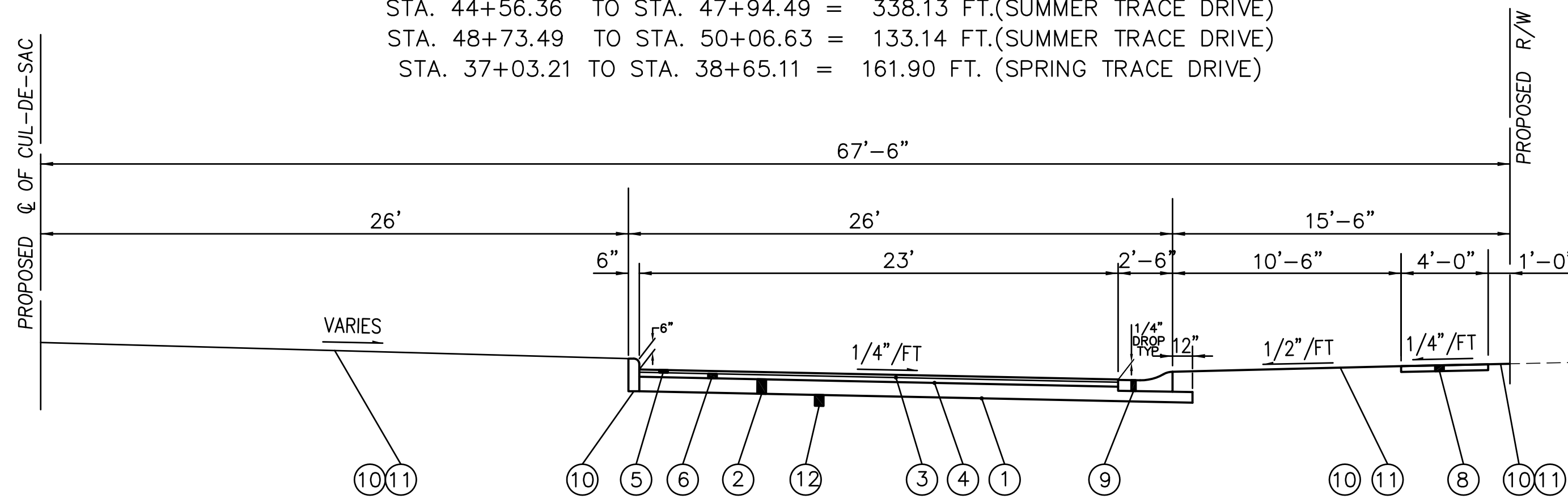


TYPICAL SECTIONS & DETAILS

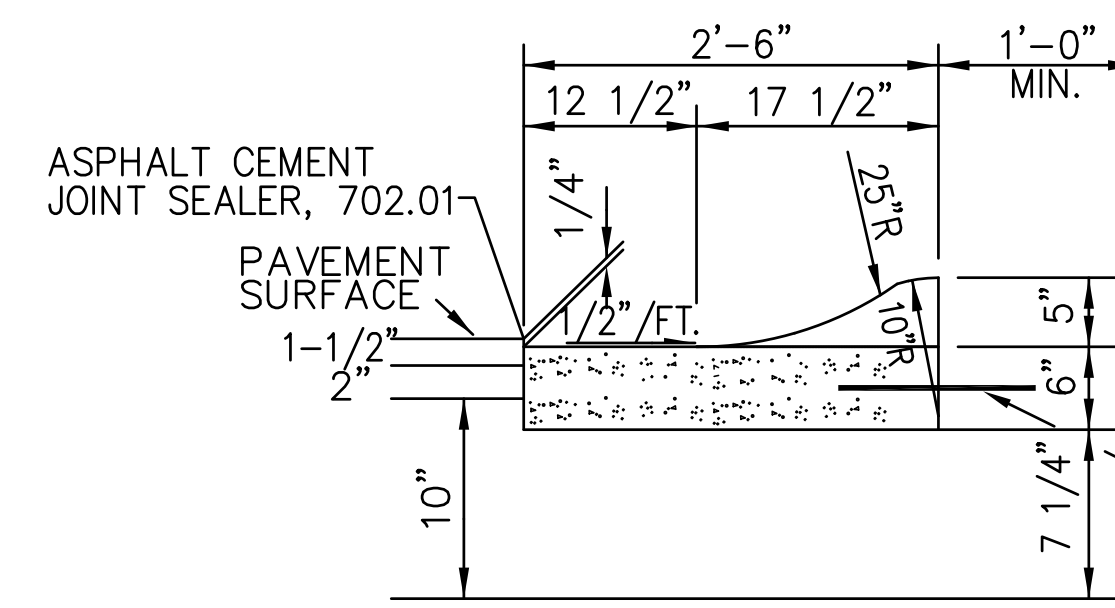


NORMAL TYPICAL SECTION

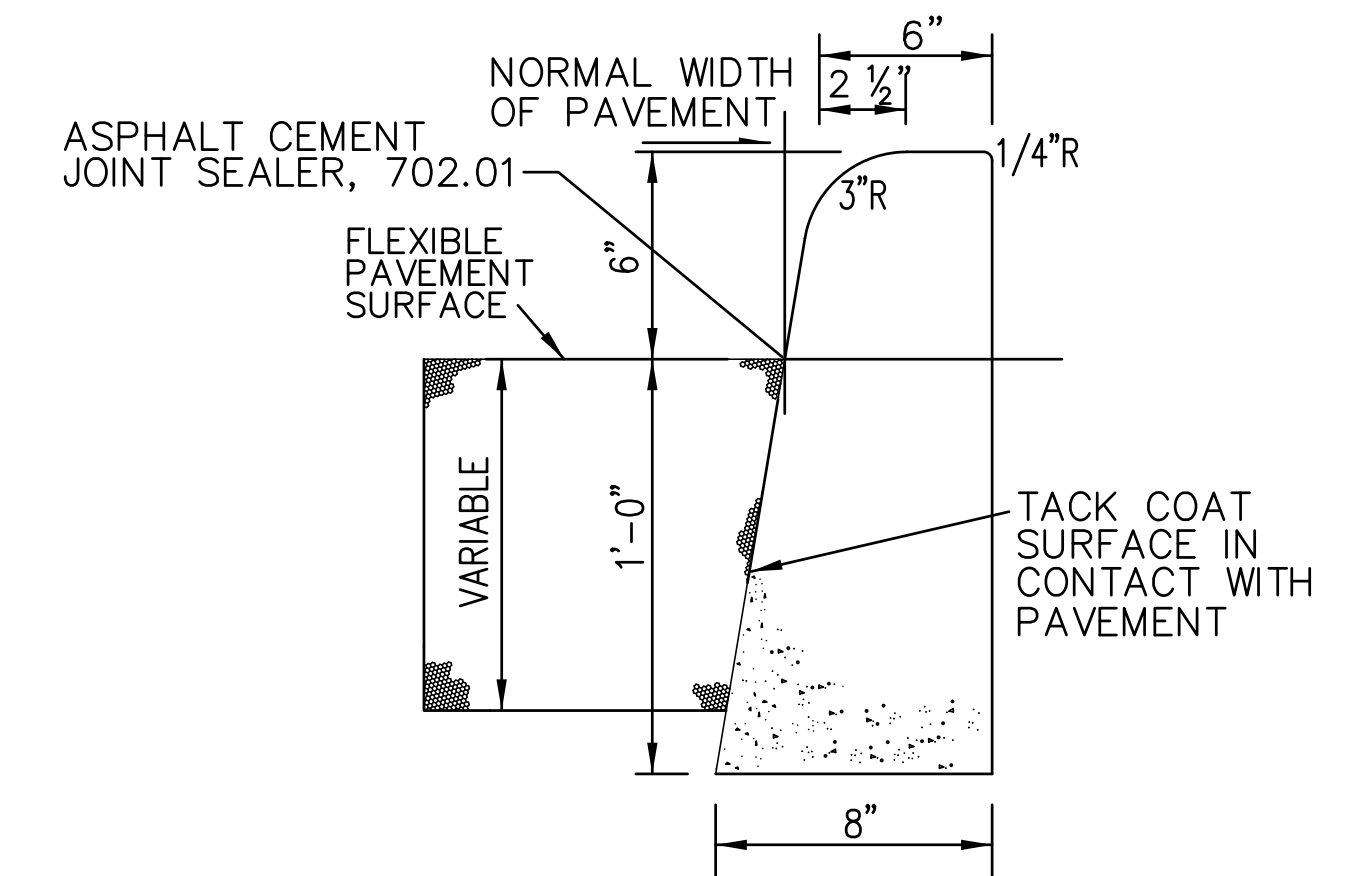
- STA. 5+15.87 TO STA. 6+88.32 = 172.45 FT. (BAY TRACE DRIVE)
- STA. 13+52.52 TO STA. 17+96.31 = 443.79 FT. (BAY TRACE DRIVE)
- STA. 40+86.00 TO STA. 41+73.49 = 87.49 FT. (SUMMER TRACE DRIVE)
- STA. 43+12.86 TO STA. 43+77.36 = 64.50 FT. (SUMMER TRACE DRIVE)
- STA. 44+56.36 TO STA. 47+94.49 = 338.13 FT. (SUMMER TRACE DRIVE)
- STA. 48+73.49 TO STA. 50+06.63 = 133.14 FT. (SUMMER TRACE DRIVE)
- STA. 37+03.21 TO STA. 38+65.11 = 161.90 FT. (SPRING TRACE DRIVE)



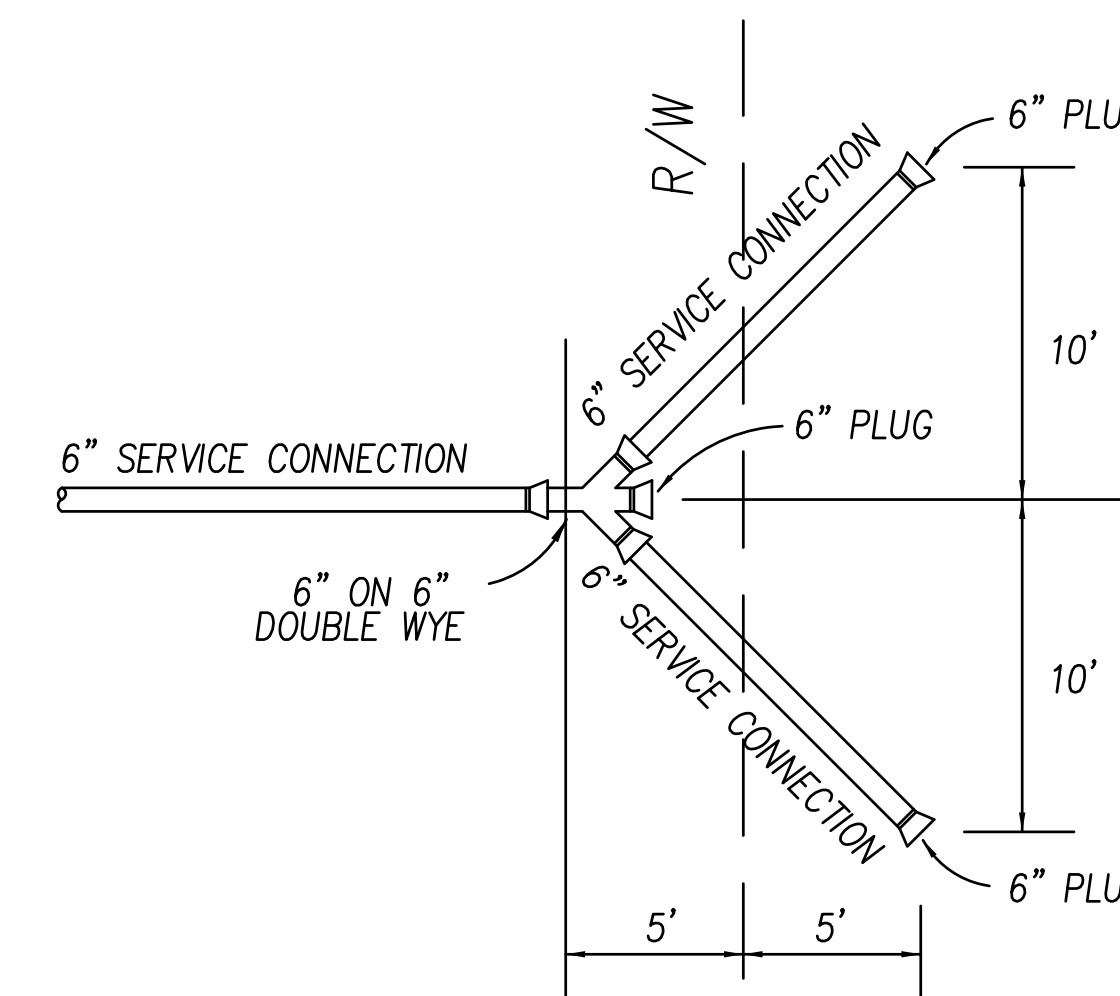
TYPICAL CUL-DE-SAC HALF-SECTION
(BAY TRACE DRIVE)



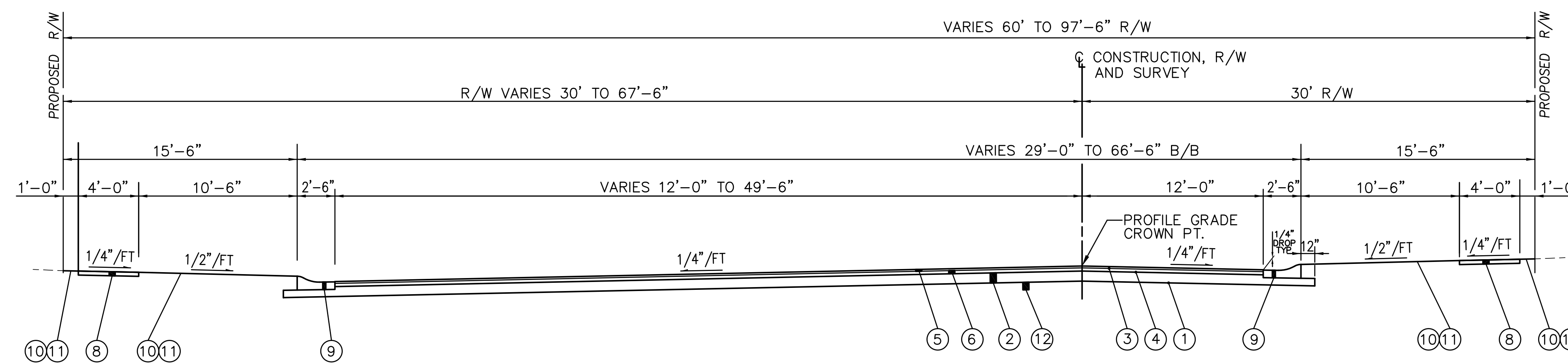
**WOOD COUNTY: TYPE "F"
MOUNTABLE CURB & GUTTER DETAIL**
N.T.S.



**WOOD COUNTY:
TYPE "A" CURB DETAIL**



DOUBLE LOT SEWER CONNECTION
N.T.S.



TYPICAL EYEBROW SECTION
(SUMMER TRACE DRIVE)

PROPOSED LEGEND

- ① ITEM 204 - SUBGRADE COMPACTION
- ② ITEM 304 - 10" AGGREGATE BASE (2 COURSES)
- ③ ITEM 407 - TACK COAT FOR INTERMEDIATE COURSE (0.05 GAL/SY)
- ④ ITEM 408 - PRIME COAT (0.40 GAL./S.Y.)
- ⑤ ITEM 448 - 1 1/2" ASPHALT CONCRETE SURFACE COURSE, TYPE 1, PG 64-22
- ⑥ ITEM 448 - 2" ASPHALT CONCRETE INTERMEDIATE COURSE, TYPE 2, PG 64-22
- ⑦ ITEM 608 - 4" CONCRETE WALK, 6" AT DRIVES (BY OTHERS) (6" WALK AT DRIVE TO 1' BEYOND EDGE OF DRIVE)
- ⑧ ITEM 609 - COMBINATION CURB AND GUTTER, WOOD COUNTY TYPE "F"
- ⑨ ITEM 609 - CURB, WOOD COUNTY TYPE "A"
- ⑩ ITEM 659 - SEEDING, MULCHING AND COMMERCIAL FERTILIZER
- ⑪ ITEM 203 - REMOVE TOPSOIL AND REPLACE WITH SUITABLE EXCAVATED MATERIAL FROM THE SITE, COMPACT TO 100% STANDARD PROCTOR
- ⑫ ITEM 204 - GEOTEXTILE FABRIC (SUBGRADE IMPROVEMENT - CONTINGENCY)

Plot Date: 1/5/2016, 9:32 AM
File Name: 4 of 25 Typical Section & Details Eckel Trace Plat 3, 4 & 5.dwg