

RECEIVED \_\_\_\_\_, 20\_\_\_\_  
RECORDED \_\_\_\_\_, 20\_\_\_\_  
BOOK \_\_\_\_\_ PAGE \_\_\_\_\_  
COUNTY RECORDER

Vol: 23 Pg: 578

WOOD COUNTY  
PERRYSBURG TOWNSHIP  
SEC. 16 & 21, TOWNSHIP 4, UNITED STATES RESERVE

SECTION CORNERS		
NAME	NORTHING	EASTING
MN1	677869.79	1668198.10
MN2	672537.99	1668089.67
SV1	677814.24	1670884.39
SV10	677893.60	1665508.04
SV16	677938.32	1662827.18
SV18	680567.83	1665560.55
SV19	683236.33	1665600.38
SV20	672480.49	1670746.00
SV21	672560.08	1665431.48

MONUMENT TABLE							
E of R/W SR 199		PROJECT COORDINATES SEE SURVEY CERTIFICATION		MONUMENTS TO BE SET DURING CONSTRUCTION		R/W MON. EXPECTED TO BE DISTURBED	DESCRIPTION
STATION	OFFSET	NORTH (Y)	EAST (X)	MON. ASSY.	REF. MON.	R/W MON.	
1444+63.34	0.00'	675746.50	1667273.57	1			MONUMENT BOX SET
1468+50.19	0.00'	677884.43	1666212.30	1			MONUMENT BOX SET
1483+83.82	0.00'	679260.35	1665534.88	1			MONUMENT BOX SET
TOTAL CARRIED TO GENERAL SUMMARY SHEET				3			

<p>∠ CONST. CR 103 P.I.Sta. 38+49.67 Δ = 2° 49' 29" (RT) Dc = 1° 20' 42" R = 4,260.00' T = 105.03' L = 210.02' E = 1.29' C = 210.00' C.B. = S 87° 48' 15" E</p>	<p>∠ CONST. CR 103 P.I.Sta. 42+53.35 Δ = 3° 14' 32" (RT) Dc = 1° 20' 42" R = 4,260.00' T = 120.56' L = 241.06' E = 1.71' C = 241.03' C.B. = N 89° 22' 37" E</p>	<p>∠ CONST. SR 199 P.I.Sta. 21+03.69 Δ = 31° 20' 23" (LT) Dc = 15° 30' 00" R = 369.65' T = 103.69' L = 202.19' E = 14.27' C = 199.68' C.B. = N 10° 30' 43" W</p>	<p>∠ CONST. SR 199 P.I.Sta. 18+28.95 Δ = 58° 47' 25" (RT) Dc = 15° 30' 00" R = 369.65' T = 208.25' L = 379.29' E = 54.62' C = 362.87' C.B. = N 24° 14' 14" W</p>	<p>∠ CONST. SR 199 P.I.Sta. 14+83.32 Δ = 27° 19' 13" (LT) Dc = 9° 45' 00" R = 587.65' T = 142.82' L = 280.21' E = 17.11' C = 277.56' C.B. = N 39° 58' 20" W</p>
---	---	--	--	---

SETTING OF ALL MONUMENTS SHALL BE PERFORMED BY A SURVEYOR REGISTERED IN THE STATE OF OHIO. THE MONUMENT ASSEMBLIES AND REFERENCE MONUMENTS WILL BE INSTALLED BY THE CONTRACTOR AT THE TIME OF CONSTRUCTION. THE IRON PIN AND CAP (WHEN REQUIRED) ARE TO BE INSTALLED BY THE CONTRACTOR'S SURVEYOR.

CHANGES OR ALTERATIONS TO THE LOCATION OF ANY MONUMENTS SHOWN IN THIS TABLE, REQUIRE PRIOR APPROVAL FROM THE DISTRICT REAL ESTATE ADMINISTRATOR OF THE OHIO DEPARTMENT OF TRANSPORTATION. IN THE EVENT THAT CHANGES OR ALTERATIONS ARE APPROVED, A REVISED CENTERLINE PLAT WITH THE NEW LOCATIONS SHALL BE RECORDED IN THE APPLICABLE COUNTY RECORDS AND THE OHIO DEPARTMENT OF TRANSPORTATION. SPECIFICATIONS FOR MONUMENT ASSEMBLIES, REFERENCE MONUMENTS AND RIGHT OF WAY MONUMENTS ARE SHOWN ON STANDARD CONSTRUCTION DRAWING RM-1.1.

E R/W SR 199 MONUMENTS						
POINT	STATION	OFFSET	NORTHING	EASTING	DESCRIPTION	ODOT REF
MN77	1419+29.00	0.00' RT	673478.87	1668405.15	MAG NAIL	67A
MN78	1423+90.97	0.00' RT	673891.36	1668197.15	MAG NAIL	67B
MN79	1429+21.36	0.72' RT	674365.49	1667959.41	MAG NAIL	67C
MN80	1438+50.11	3.74' RT	675196.50	1667544.67	MAG NAIL	68
MN81	1438+53.60	0.00' RT	675197.93	1667539.76	MAG NAIL	68A
MN82	1460+62.53	0.00' RT	677178.92	1666562.51	MAG NAIL	68B
SV11	1468+50.19	0.00' RT	677884.43	1666212.29	MAG NAIL	68C
MN84	1468+53.52	0.22' LT	677887.32	1666210.63	MAG NAIL	69
MN86	1483+51.44	0.00' RT	679231.29	1665549.18	MAG NAIL	69A
MN87	1484+58.81	0.12' RT	679327.52	1665501.55	MAG NAIL	69AB
MN88	1491+01.99	2.70' RT	679904.39	1665217.09	MAG NAIL	69B
MN89	1498+56.37	0.00' RT	680578.43	1664878.33	MAG NAIL	70

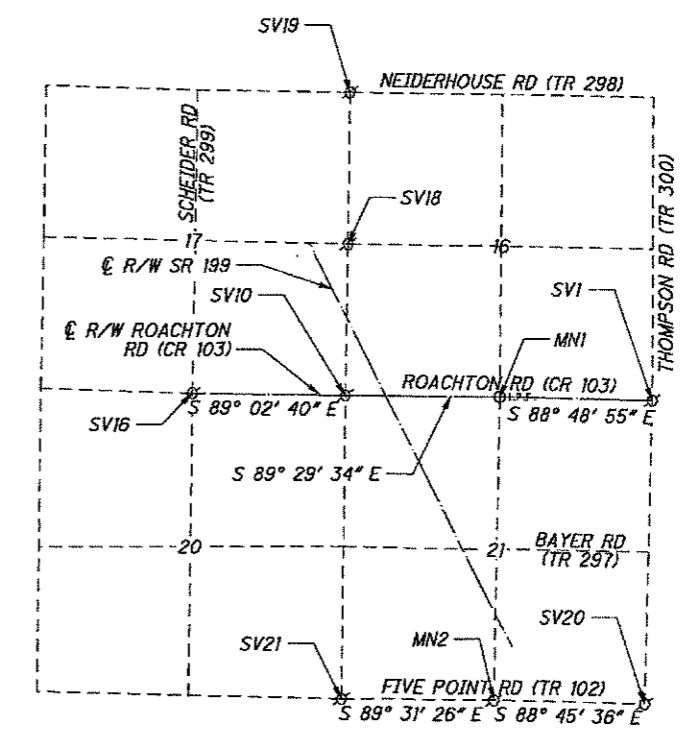
  

E R/W ROACHTON RD (CR 103) MONUMENTS						
POINT	STATION	OFFSET	NORTHING	EASTING	DESCRIPTION	ODOT REF
SV1	315+26.30	0.00' RT	677814.240	1670884.386	RSPK	
MN1	288+39.43	0.00' RT	677869.790	1668198.095	IPIN	
MN84	268+51.89	0.06' RT	677887.321	1666210.629	MAG	69
SV10	261+49.27	0.00' RT	677893.602	1665508.042	RSPK	
SV16	234+68.03	0.00' RT	677938.320	1662827.176	RSPK	

ADDITIONAL MONUMENTS FOUND E R/W SR 199					
NAME	STATION	OFFSET	NORTHING	EASTING	DESCRIPTION
SV18	1495+42.71	605.93' RT	680567.83	1665560.55	RSPK
SV26	1473+35.78	33.21' LT	678305.42	1665968.02	IPIN
SV27	1473+63.99	178.16' LT	678266.70	1665825.51	IPIN
SV28	1482+48.98	40.14' LT	679121.64	1665558.42	IPIPE
SV29	1483+43.65	34.47' LT	679209.08	1665521.70	IPIN
SV30	1484+94.10	39.67' LT	679341.37	1665450.21	IPIPE
SV31	1484+63.14	39.51' LT	679313.73	1665464.15	IPIPE
SV32	1483+35.42	29.55' RT	679229.97	1665582.77	IPIPE
SV33	1485+03.51	30.18' RT	679380.93	1665508.53	IPIPE
SV3643	1456+99.18	29.09' RT	676866.40	1666750.13	IPIN

ADDITIONAL MONUMENTS FOUND E R/W ROACHTON RD (CR 103)					
NAME	STATION	OFFSET	NORTHING	EASTING	DESCRIPTION
SV22	264+59.56	30.00' LT	677920.85	1665818.58	IPIN
SV23	264+09.58	29.85' LT	677921.15	1665768.60	IPIN
SV24	261+49.57	30.06' LT	677923.65	1665508.61	IPIPE



X:\4012500\130855\01\95827\96355\row\sheet\96355R0002.dgn 12/16/2014 5:08:07 PM 1598nm

CENTERLINE PLAT

WOO-199-27.97

2 / 3

3 / 18