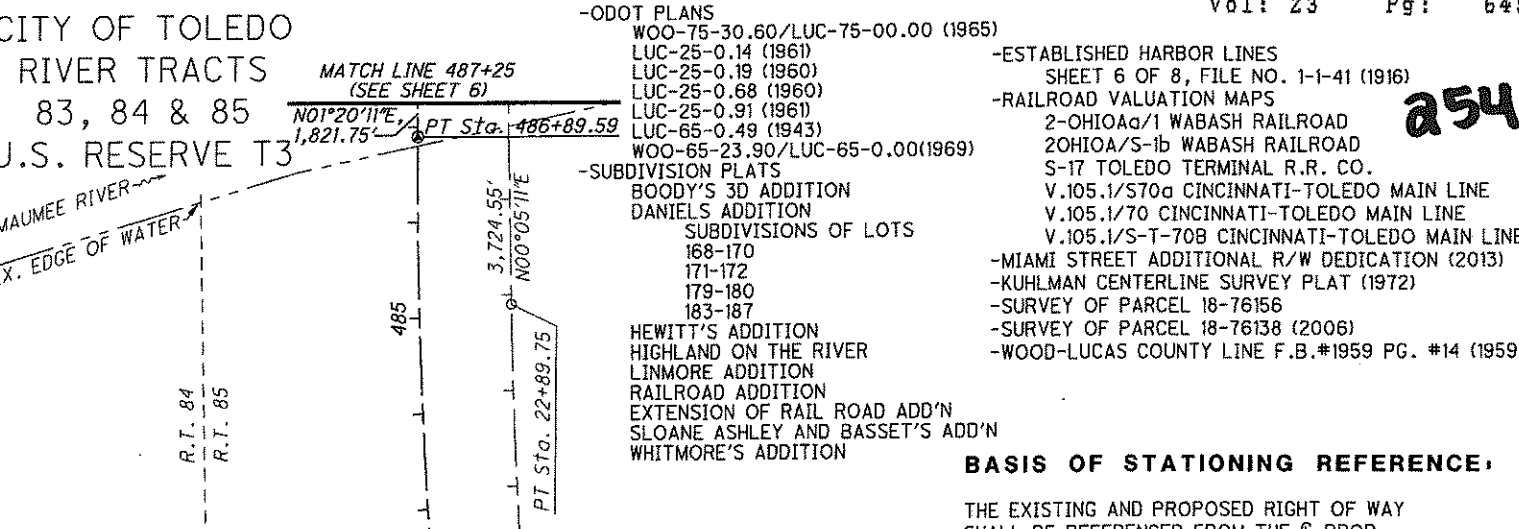


PROP. R/W & CONST. I.R. 75		EX. R/W I.R. 75		STATE PLANE GRID COORDINATES (METERS)		STATE PLANE GROUND COORDINATES (U.S. FEET)		EX. MON.	(M) PROP. ADJ. & MON.	(D) PROP. DISC & MON.
STATION	OFFSET	STATION	OFFSET	NORTHING (Y)	EASTING (X)	NORTHING (Y)	EASTING (X)			
470+01.15	0	471+44.86	97.44' LT	217201.297	513198.574	712628.741	1683783.930			1
474+63.10	0	475+99.53	84.68' LT	217339.540	513171.881	713082.311	1683696.352			1
480+00.00	0	17+86.13	90.78' LT	217501.431	513148.425	713613.470	1683619.394			1
486+89.59	0	24+67.48	94.74' LT	217711.342	513140.685	714302.180	1683594.002			1
PROP. R/W & CONST. I.R. 75		EX. R/W MIAMI ST								
473+71.86	1896.34' LT	81+64.84	0	217202.659	512609.653	712633.211	1681851.704			
473+77.43	1887.81' LT	0+00.00	0	217204.819	512611.884	712640.297	1681859.025			
476+58.34	1392.51' LT	5+97.71	0	217331.929	512742.374	713057.339	1682287.159			
478+27.10	223' LT	17+82.83	0	217440.443	513088.901	713413.369	1683417.536		1	
479+79.31	829.28' RT	28+44.85	0	217520.550	513400.524	713676.199	1684446.523			
483+64.69	2091.96' RT	41+39.06	0	217633.609	513778.434	714047.141	1685686.430			
R/W CONNECTOR RD										
-	-	9+82.06	0	217293.754	512703.180	712932.088	1682158.563		1	
-	-	12+58.09	0	217229.590	512757.597	712721.569	1682337.104		1	
-	-	15+40.11	0	217194.347	512833.102	712605.939	1682584.832		1	
-	-	24+84.07	0	217192.620	513120.803	712600.272	1683528.768		1	
TOTALS TO GENERAL SUMMARY									6	4



SETTING OF ALL MONUMENTS SHALL BE PERFORMED BY A SURVEYOR REGISTERED IN THE STATE OF OHIO. THE MONUMENT ASSEMBLIES AND REFERENCE MONUMENTS WILL BE INSTALLED BY THE CONTRACTOR AT THE TIME OF CONSTRUCTION. THE IRON PIN AND CAP (WHEN REQUIRED) ARE TO BE INSTALLED BY THE CONTRACTOR'S SURVEYOR. CHANGES OR ALTERATIONS TO THE LOCATION OF ANY MONUMENTS SHOWN IN THIS TABLE, REQUIRE PRIOR APPROVAL FROM THE DISTRICT REAL ESTATE ADMINISTRATOR OF THE OHIO DEPARTMENT OF TRANSPORTATION. IN THE EVENT THAT CHANGES OR ALTERATIONS ARE APPROVED, A REVISED CENTERLINE PLAT WITH THE NEW LOCATIONS SHALL BE RECORDED IN THE APPLICABLE COUNTY RECORDS AND THE OHIO DEPARTMENT OF TRANSPORTATION. SPECIFICATIONS FOR MONUMENT ASSEMBLIES, REFERENCE MONUMENTS AND RIGHT OF WAY MONUMENTS ARE SHOWN ON STANDARD CONSTRUCTION DRAWING RM-1.1.

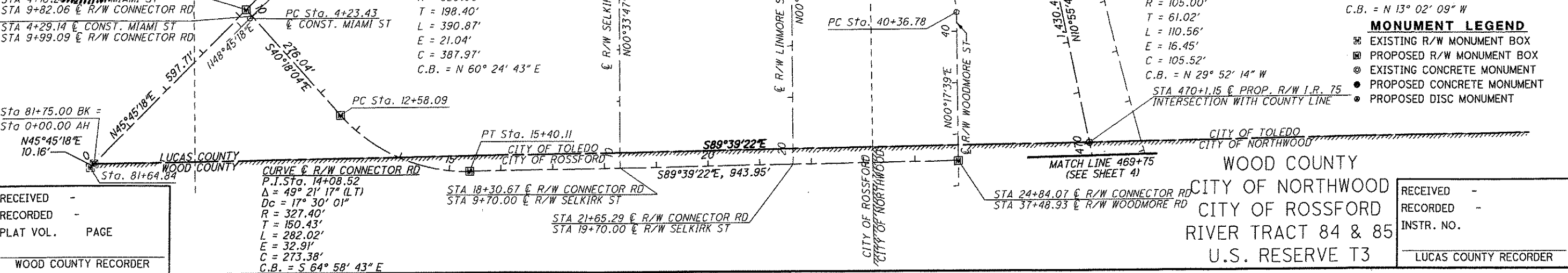
ITEM 623 - MONUMENT, MISC.: TYPE A MONUMENT, AS PER PLAN PROVIDE A 3" MIN. DIAMETER ALUMINUM CAP MONUMENT WITH A 3" LONG SPLIT-STYLE TAPERED STEM WITH INVERTED "Y" DESIGN, IMPRINTED PER DESIGN 5 PER SCD RM-1.1 CHISEL OR DRILL A 3/4" TO 1" DIAMETER HOLE 3 1/2" DEEP IN THE TOP OF THE CONCRETE MEDIAN BARRIER. CLEAN THE HOLE WITH COMPRESSED AIR. INSTALL THE CAP INTO THE HOLE WITH NON-SHRINKING CEMENT GROUT. (SEE SHEET 4 OR 6 FOR DETAIL)

I, Matthew J. Puhl, P. S. have conducted a survey of the existing conditions for the Ohio Department of Transportation during the summer of 2013. The results of that survey are contained herein. The horizontal coordinates expressed herein are based on the Ohio State Plane Coordinates System North Zone on NAD 83 (2011) horizontal datum and NAVD88 vertical datum. The Project Coordinates (US Survey Feet) are relative to State Plane Grid Coordinates (Meters) by a Project Adjustment Factor of 3.280959878. As a part of this project I have reestablished the locations of the existing property lines and the existing centerline of Right of Way for property takes contained herein. As a part of this project I have established the proposed property lines, calculated the Gross Take, present roadway occupied (PRO), Net Take and Net Residue; as well as prepared the legal descriptions necessary to acquire the parcels as shown herein. As a part of this work I have set right of way monuments at the property corners, property line intersection, points along the right of way and/or angle points on the right of way, Section Corners and other points as shown herein. All of my work contained herein was conducted in accordance with Ohio Administrative Code 4733-37 commonly known as "Minimum Standards for Boundary Surveys in the State of Ohio" unless noted. The words I and my as used herein are to mean either myself or someone working under my direct supervision.

Matthew J. Puhl, Professional Land Surveyor #8363



BASIS FOR BEARINGS:
 BEARINGS USED HERE IN ARE BASED ON OHIO STATE PLANE COORDINATE SYSTEM, NORTH ZONE NAD83(2011) AND ARE FOR PROJECT USE ONLY.



RECEIVED -
 RECORDED -
 PLAT VOL. PAGE
 WOOD COUNTY RECORDER

RECEIVED -
 RECORDED -
 INSTR. NO.
 LUCAS COUNTY RECORDER

LUCAS COUNTY
 CITY OF TOLEDO
 RIVER TRACTS
 83, 84 & 85
 U.S. RESERVE T3

ODOT PLANS
 WOO-75-30.60/LUC-75-00.00 (1965)
 LUC-25-0.14 (1961)
 LUC-25-0.19 (1960)
 LUC-25-0.68 (1960)
 LUC-25-0.91 (1961)
 LUC-65-0.49 (1943)
 WOO-65-23.90/LUC-65-0.00(1969)

-ESTABLISHED HARBOR LINES
 SHEET 6 OF 8, FILE NO. 1-1-41 (1916)

-RAILROAD VALUATION MAPS
 2-OHIO&I WABASH RAILROAD
 2OHIO&S-1b WABASH RAILROAD
 S-17 TOLEDO TERMINAL R.R. CO.
 V.105.1/S70a CINCINNATI-TOLEDO MAIN LINE
 V.105.1/70 CINCINNATI-TOLEDO MAIN LINE
 V.105.1/S-T-70b CINCINNATI-TOLEDO MAIN LINE

-SUBDIVISION PLATS
 BOODY'S 3D ADDITION
 DANIELS ADDITION
 SUBDIVISIONS OF LOTS
 168-170
 171-172
 179-180
 183-187

HEWITT'S ADDITION
 HIGHLAND ON THE RIVER
 LINMORE ADDITION
 RAILROAD ADDITION
 EXTENSION OF RAIL ROAD ADD'N
 SLOANE ASHLEY AND BASSETT'S ADD'N
 WHITMORE'S ADDITION

-MIAMI STREET ADDITIONAL R/W DEDICATION (2013)
 -KUHLMAN CENTERLINE SURVEY PLAT (1972)
 -SURVEY OF PARCEL 18-76156
 -SURVEY OF PARCEL 18-76138 (2006)
 -WOOD-LUCAS COUNTY LINE F.B.#1959 PG. #14 (1959)

BASIS OF STATIONING REFERENCE:
 THE EXISTING AND PROPOSED RIGHT OF WAY SHALL BE REFERENCED FROM THE C PROP. R/W & CONST. I.R. 75 UNLESS OTHERWISE NOTED.

PI Sta. 41+39.06
 STA 479+79.31, 829.28' RT, C PROP. R/W I.R. 75
 PT STA 28+44.85 NO CURVE C R/W MIAMI ST
 1,294.21/30
 N73°20'40"E
 POT Sta. 28+20.25
 C CONST. MIAMI ST
 C CONST. & C R/W HAVE SAME BEARING
 C CONST. IS ONE FOOT PERPENDICULAR IN A SOUTHERLY DIRECTION OF THE C R/W

CURVE C EX. R/W I.R. 75
 P.I. Sta. 19+06.81
 Δ = 7° 40' 13" (RT)
 Dc = 1° 00' 00"
 R = 5,729.58'
 T = 384.08'
 L = 767.02'
 E = 12.86'
 C = 766.44'
 C.B. = N 3° 44' 55" W

CURVE C PROP. R/W & CONST. I.R. 75
 P.I. Sta. 480+78.70
 Δ = 12° 15' 54" (RT)
 Dc = 1° 00' 00"
 R = 5,729.58'
 T = 615.60'
 L = 1,226.50'
 E = 32.98'
 C = 1,224.16'
 C.B. = N 4° 47' 46" W

CURVE C EX. R/W I.R. 75
 P.I. Sta. 473+21.33
 Δ = 10° 54' 15" (RT)
 Dc = 1° 00' 00"
 R = 5,729.58'
 T = 546.87'
 L = 1,090.43'
 E = 26.04'
 C = 1,088.78'
 C.B. = N 13° 02' 09" W

CURVE C R/W WOODMORE RD
 P.I. Sta. 40+97.80
 Δ = 60° 19' 45" (LT)
 Dc = 54° 34' 03"
 R = 105.00'
 T = 61.02'
 L = 110.56'
 E = 16.45'
 C = 105.52'
 C.B. = N 29° 52' 14" W

MONUMENT LEGEND
 ■ EXISTING R/W MONUMENT BOX
 □ PROPOSED R/W MONUMENT BOX
 ● EXISTING CONCRETE MONUMENT
 ○ PROPOSED CONCRETE MONUMENT
 ● PROPOSED DISC MONUMENT

STA 470+1.15 C PROP. R/W I.R. 75
 INTERSECTION WITH COUNTY LINE

STA 478+54.65 C PROP. R/W I.R. 75
 STA 20+07.60 C R/W MIAMI ST
 STA 478+53.64 C PROP. R/W I.R. 75
 STA 20+07.47 C CONST. MIAMI ST
 PI Sta. 17+82.83
 NO CURVE
 PT Sta. 17+92.52
 C CONST. MIAMI ST
 PC Sta. 17+36.86
 C CONST. MIAMI ST
 CURVE C CONST. MIAMI ST
 P.I. Sta. 17+64.70
 Δ = 3° 09' 15" (RT)
 Dc = 5° 40' 00"
 R = 1,011.10'
 T = 27.84'
 L = 55.66'
 E = 0.38'
 C = 55.65'
 C.B. = N 74° 05' 40" E

STA 21+54.58 C R/W & CONST. MIAMI ST
 STA 27+17.88 C R/W LINMORE ST
 STA 24+99.15 C R/W LINMORE ST
 STA 44+51.05 C R/W WOODMORE ST
 STA 16+10.46 C R/W SELKIRK ST
 STA 18+30.67 C R/W CONNECTOR RD
 STA 9+70.00 C R/W SELKIRK ST
 STA 21+65.29 C R/W CONNECTOR RD
 STA 19+70.00 C R/W SELKIRK ST
 STA 24+84.07 C R/W CONNECTOR RD
 STA 37+48.93 C R/W WOODMORE RD

MAUMEE RIVER
 EX. EDGE OF WATER
 MATCH LINE 487+25 (SEE SHEET 6)
 N01°20'11"E, 1,821.75'
 PT Sta. 486+89.59
 3,724.55'
 N00°05'11"E
 485
 480
 475
 470
 465
 460
 455
 450
 445
 440
 435
 430
 425
 420
 415
 410
 405
 400
 395
 390
 385
 380
 375
 370
 365
 360
 355
 350
 345
 340
 335
 330
 325
 320
 315
 310
 305
 300
 295
 290
 285
 280
 275
 270
 265
 260
 255
 250
 245
 240
 235
 230
 225
 220
 215
 210
 205
 200
 195
 190
 185
 180
 175
 170
 165
 160
 155
 150
 145
 140
 135
 130
 125
 120
 115
 110
 105
 100
 95
 90
 85
 80
 75
 70
 65
 60
 55
 50
 45
 40
 35
 30
 25
 20
 15
 10
 5
 0

254