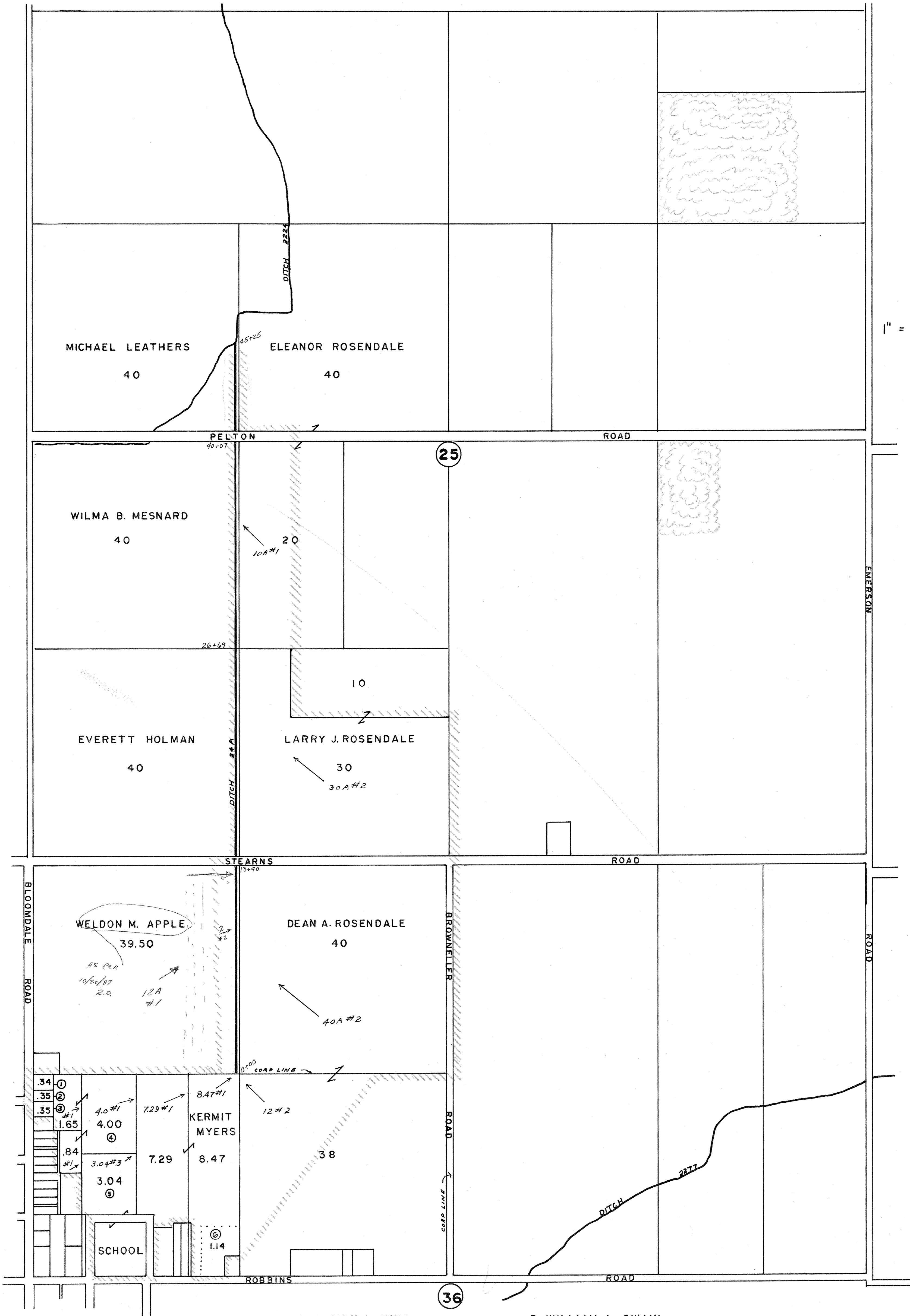


REVISED PLAT
1982
OF
A.O. ROSENDALE DITCH N^o 24-A
BLOOM TOWNSHIP WOOD COUNTY



- 1. MARVIN W. KING
- 2. ELDA M. TREIER
- 3. WILLIAM A. SWAIN
- 4. DAVID MOORE et al
- 5. BOARD OF EDUCATION
- 6. BETTY J. MOORE L/C