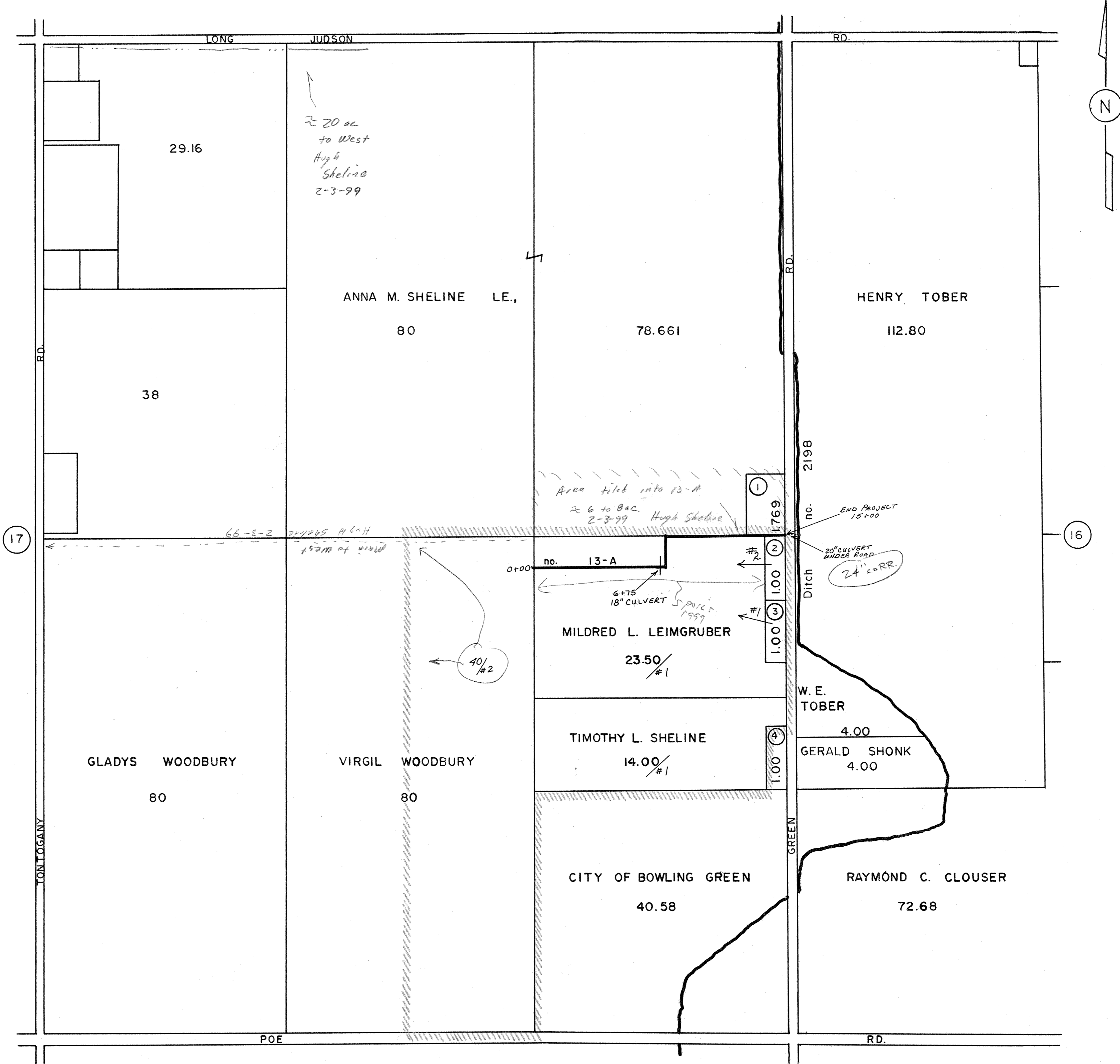


REVISED PLAT
1982
OF
WOODBURY - LEIMGRUBER DITCH NO. 13-A
PLAIN TOWNSHIP WOOD COUNTY
1" = 330



- 1. HUGH R. SHELINE
- 2. RICKY A. LEIMGRUBER
- 3. JOHN M. LEIMGRUBER
- 4. IOLA G. BAKER