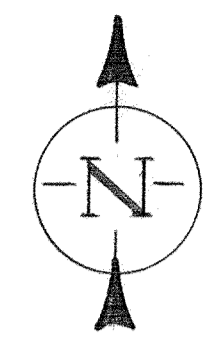
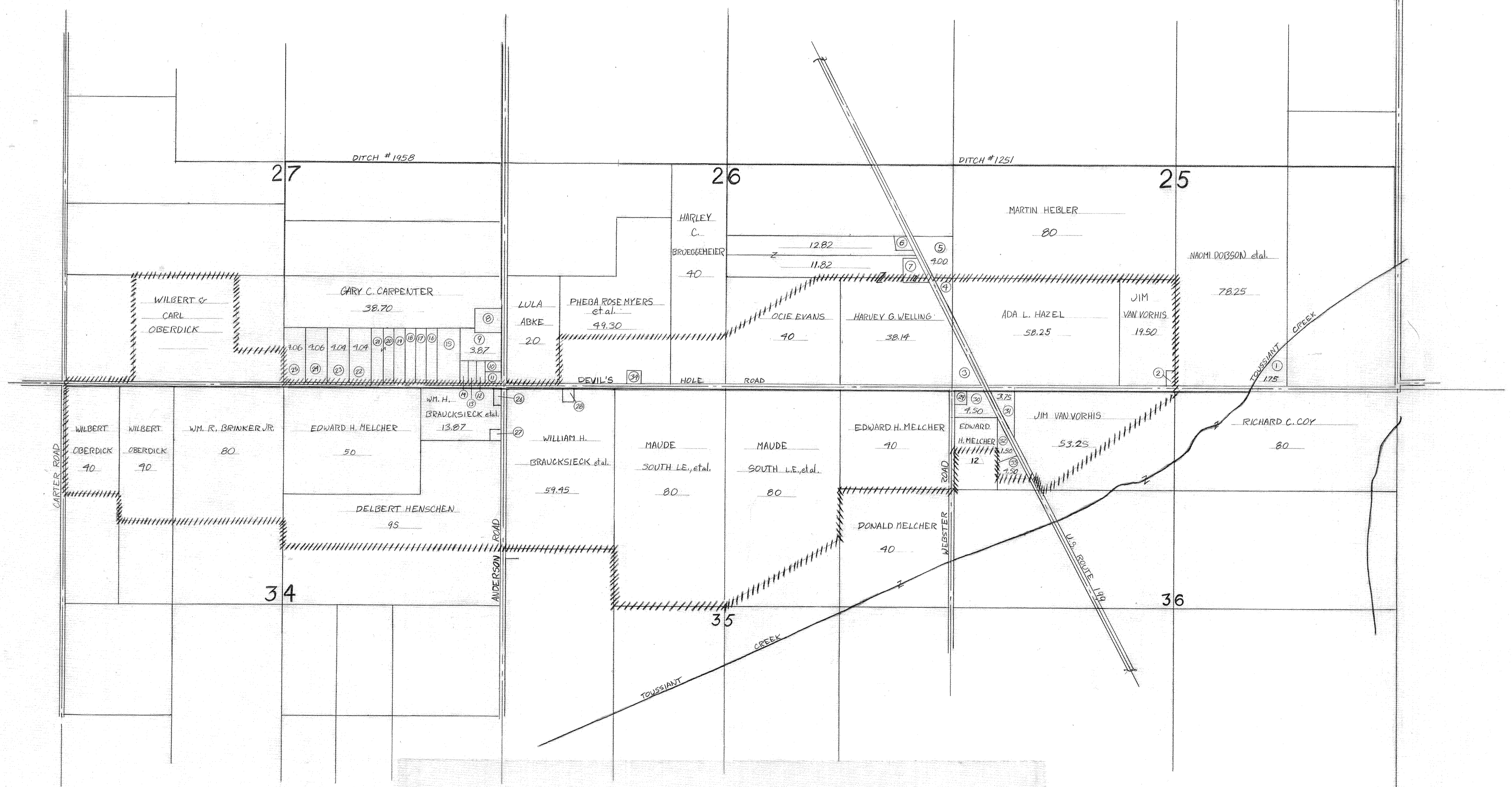


1/2-1-78



**W. BRAUCKSIECK DITCH # 2412**  
**DONALD R. McNEELEY - COUNTY ENGINEER**  
**WOOD COUNTY - WEBSTER TOWNSHIP**  
**DRAINAGE AREA**  
**JANUARY 1976**  
**DITCH BOOK #**  
**SCALE 1" = 660'**  
**drawn by R. Baumbach**  
**lettered by C. Amend**



1. Zelma M. Emmitt	1.75 ac.	13. Gary D. Moore	.69 ac.	25. Thomas Shapler	4.06 ac.
2. Franklin Shaffer	.50 ac.	14. Terry L. Donaldson	.69 ac.	26. Wm. H. Braucksieck	.61 ac.
3. Harvey G. Welling	1.75 ac.	15. Thomas D. Ferguson	4.01 ac.	27. Paul W. Braucksieck	.52 ac.
4. Fred C. Hazel	1.50 ac.	16. Douglas Knettle	2.01 ac.	28. Phillip Braucksieck	.55 ac.
5. Claire H. Welling	4.00 ac.	17. Ronald S. Kaminaki	2.01 ac.	29. James H. Shaffer	.50 ac.
6. Loren Bechstein	.68 ac.	18. Jerry M. Bonner	2.02 ac.	30. Merrill Shaffer	4.50 ac.
7. Claire H. Welling	1.91 ac.	19. William Westmeyer	2.01 ac.	31. Melvin A. Camp	3.75 ac.
8. Gary C. Carpenter	2.00 ac.	20. Ed Westmeyer	2.01 ac.	32. Shelby A. Bennett	1.50 ac.
9. David M. Calaway	3.87 ac.	21. Same	2.02 ac.	33. Anna B. Green	4.50 ac.
10. DVAL	.71 ac.	22. Duane E. Miller	4.04 ac.	34. Roger C. Bostdorff	.70 ac.
11. Same	.87 ac.	23. Joseph J. Ferry	4.04 ac.		
12. Mark C. Vandivier	.69 ac.	24. James Seifert	4.05 ac.		