

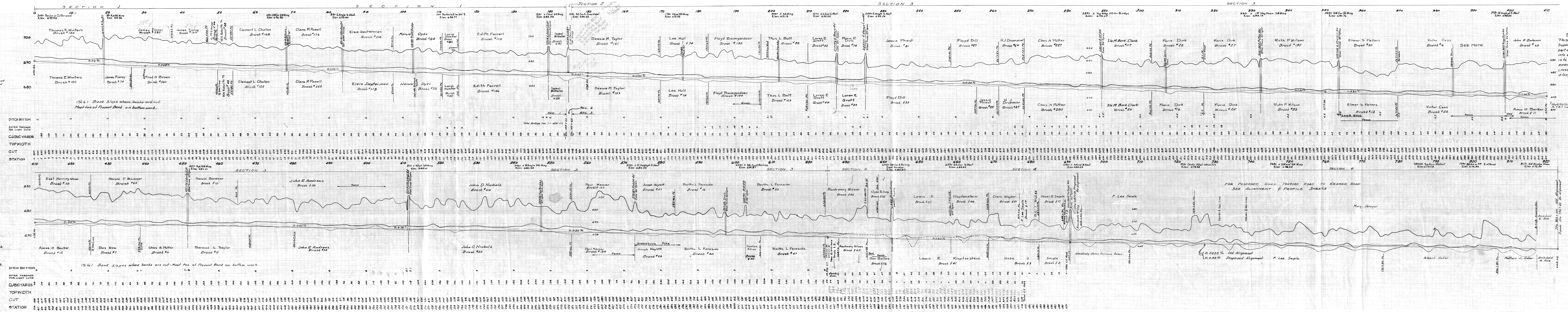
PROFILE OF NORTH BRANCH OF PORTAGE RIVER ~ JACKSON TWP. TO PEMBERVILLE
OFFICE OF THE WOOD COUNTY ENGINEER ~ MARCH 1954 ~ SCALE HOR. 1"=4000 FT., VER. 1"=12 FT.

PROFILE OF
H. J. DRUMMER DITCH No. 2107
NORTH BRANCH PORTAGE RIVER
 JACKSON, MILTON, LIBERTY & PORTAGE TOWNSHIPS
 Wood County, Ohio
 Ditch Book No. 125 B. F. HENNING
 COUNTY ENGINEER

NOTE

STA. 398+84 to 425+10
Dirt to go on lowest ditch ban
at direction of engineer.

STA. 624+50 to 628+00
Rock excavation all to go north
Right of way on old channel - 60'
each side



STA 384+55
This bridge out of service.
Superstructure has been removed;
part of North breast wall has fallen
into edge of stream. Contractor
is to remove all concrete
masonry from within the ditch
cross-section and dispose
along banks Lump Sum \$220