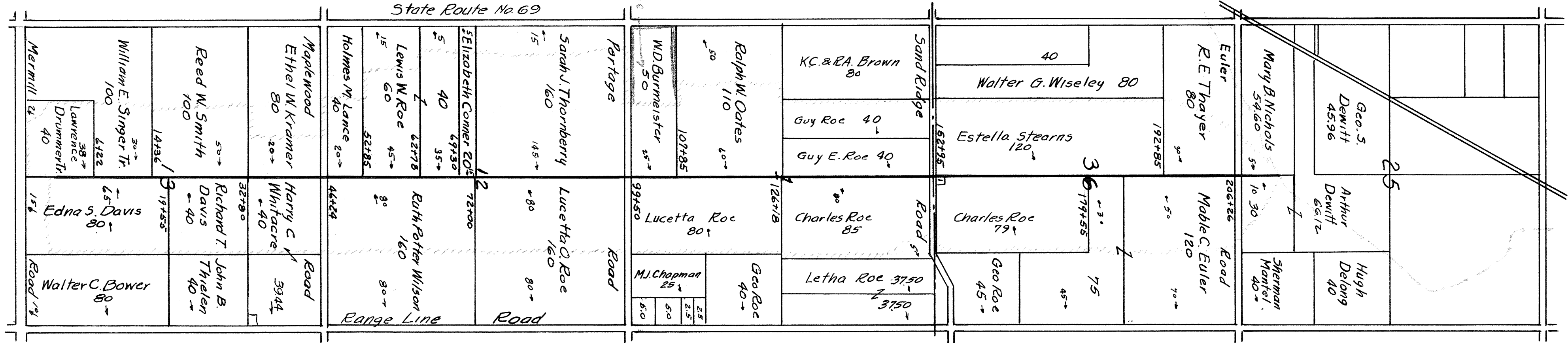


MF F-6-20

911 to 90
@ 5.5 ft 711 x 4 ft 11 in



PLAT OF
L.W. ROE DITCH NO. 2094

MILTON AND WESTON TOWNSHIPS WOOD COUNTY, OHIO
DECEMBER 1953 DB. # 129 - BERT. F. HENNING CO. ENG.

DEC 16 1953